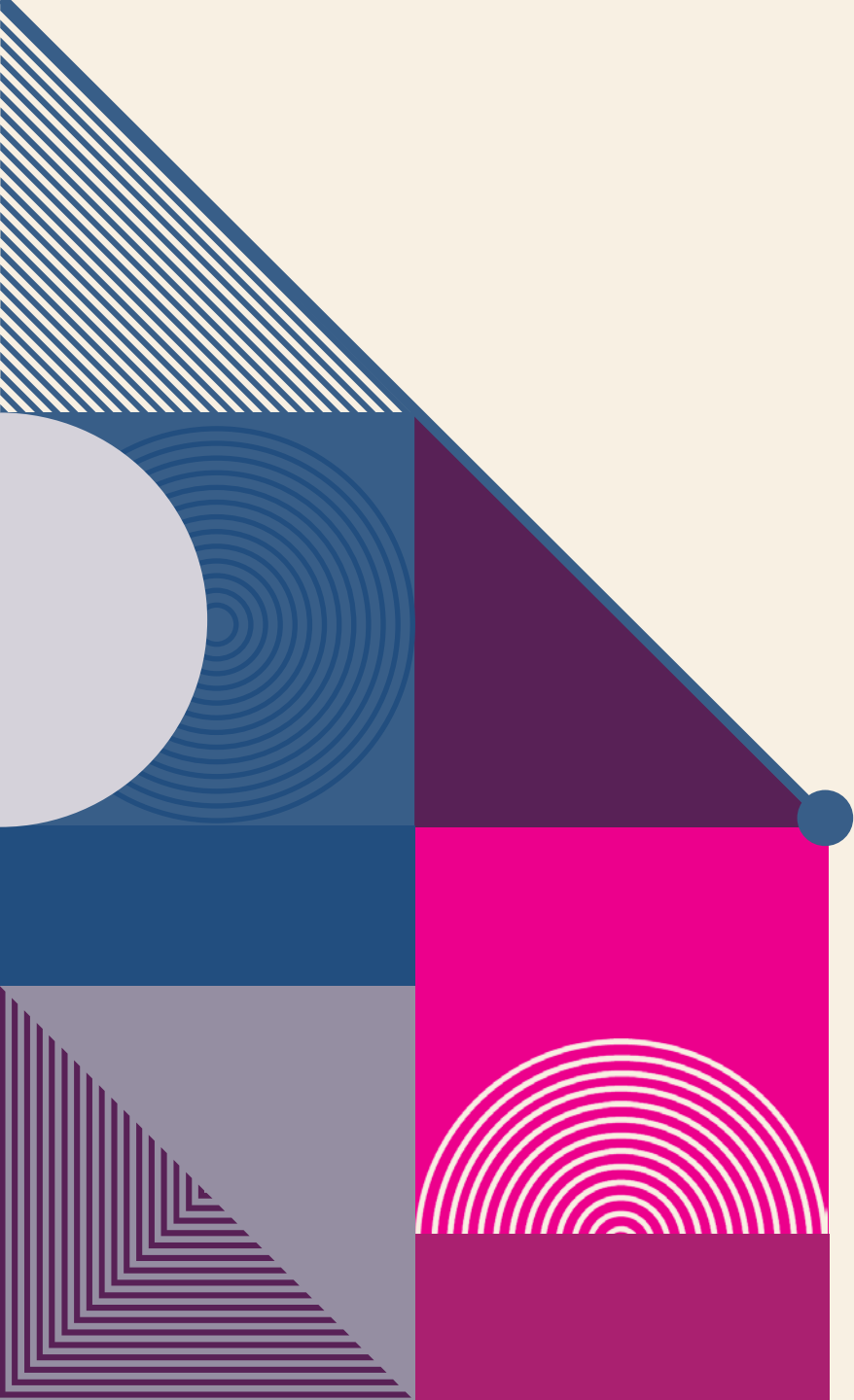


# **INFORMATIONAL PRESENTATION: INDIRECT SOURCE FEE RULE 2:11D**



# AGENDA

The basics

About 2:11D

Results and Accountability

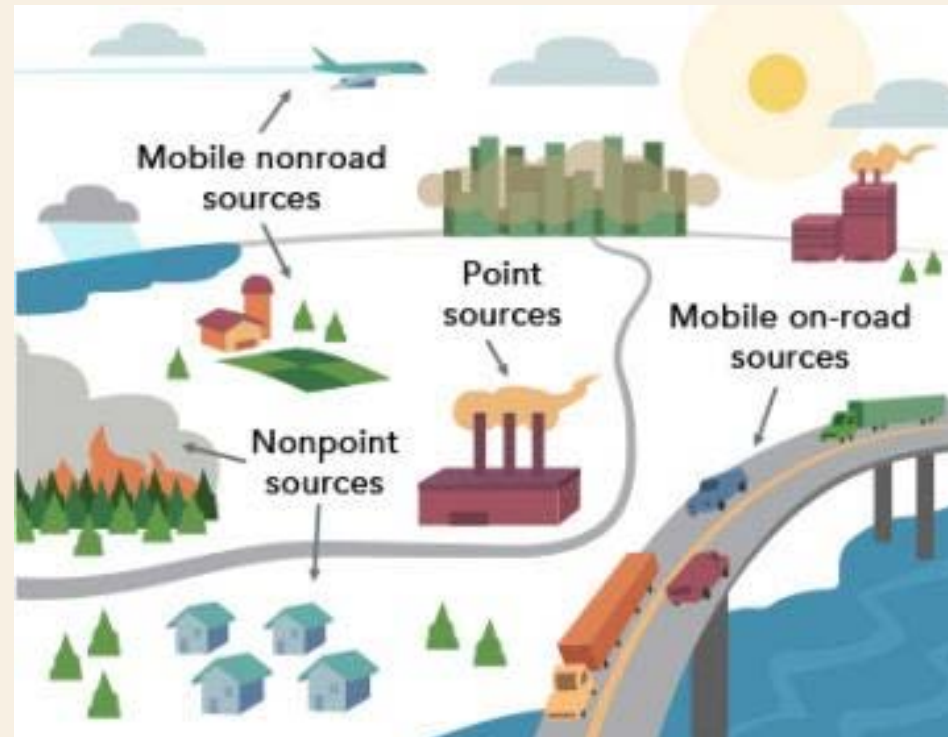
Closing



# THE BASICS

# THE BASICS

- What is an indirect source?



# THE BASICS

## Regulatory Context

- HSC 42311 allows districts to implement fees for indirect sources of emissions
- Establishes a Emissions Mitigation Program

# THE BASICS

Why are We implementing this Program?

- The March 2009 general plan identified a need for continued support of the air districts needs to achieve emissions reductions.
- The Sacramento Valley Triennial Plan identified the Northern Sacramento Valley area as nonattainment for the California Ambient Annual Air Quality standard for Ozone and PM10
- The General Plan set the Goal OS-2 “To maintain, protect, and improve the air quality in Tehama County at acceptable levels as defined by state and federal standards.”

# THE BASICS

Why are we implementing this Program?

- To implement Goal OS-2 set the following Implementation Measures:
  - OS-2.5d “Request that the Tehama County Air Pollution Control District develop Indirect Source Guidelines for the potential air emissions from future development. Require to the extent practical and applicable that all new development adhere to the District Indirect Source Guidelines to mitigate air quality and greenhouse gas impacts.”
  - OS-2.5e “Strongly consider the adoption of a County Air Quality Impact Fee to assist in the reduction of air quality impacts in the County and support the efforts by the Tehama County Air Pollution Control District to prepare and adopt District air quality impact fees.”

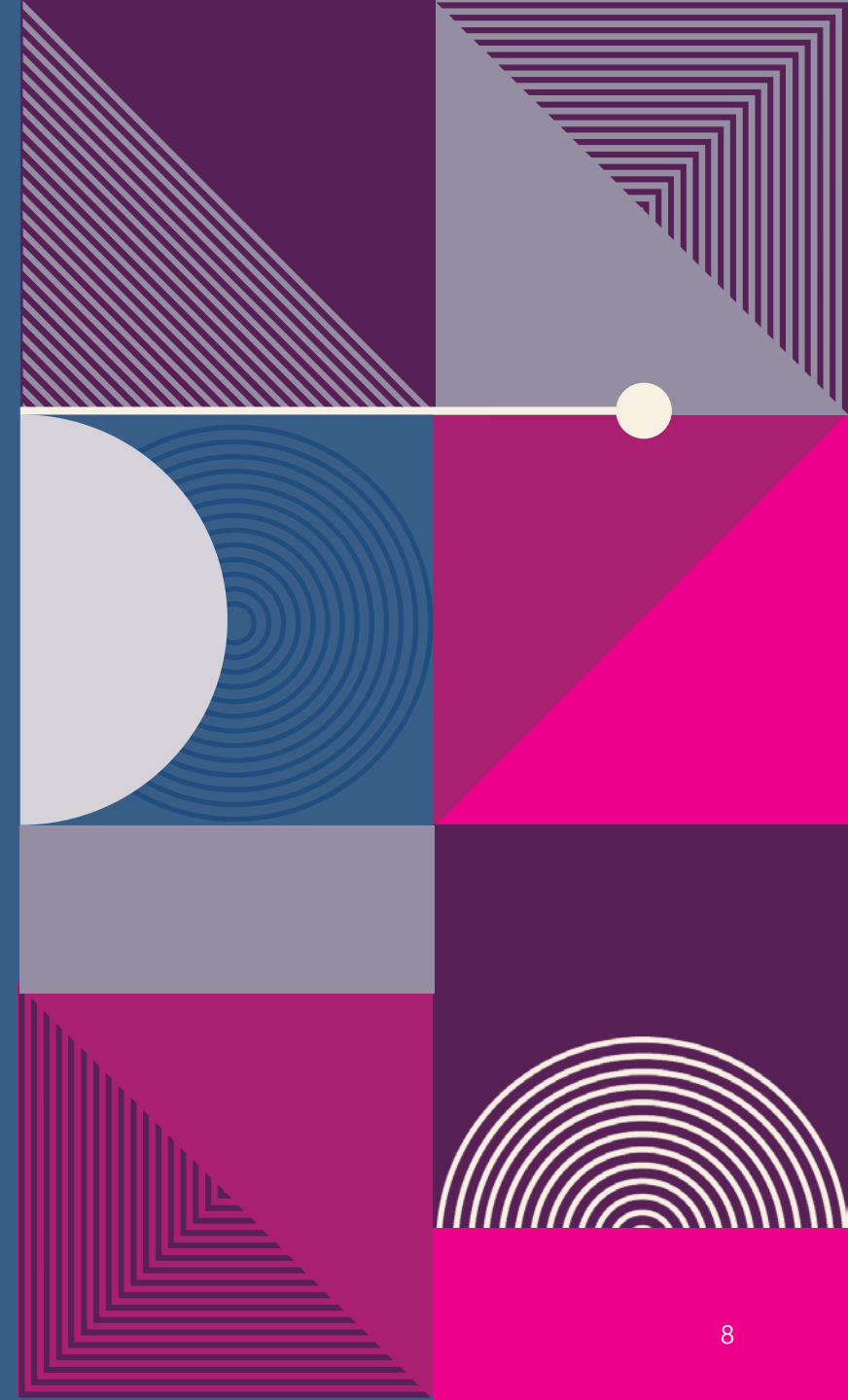
# THE BASICS

Who is involved in this Program?

The Tehama County APCD (Board and Staff)

Developers of new residential commercial and industrial projects

Residents and Businesses





# THE BASICS

## What is the Program?

- Indirect Source Fee Rule (ISR) — Rule 2:11D
- A one-time fee assessed on new construction that accounts for added vehicle traffic, construction emissions and other indirect sources of emissions.
- Funds are directly invested in local air quality projects through Local grants to reduce emissions.
- Projects are reviewed by the Air District, the Review Committee and brought to the Air Districts Board of Directors for approval.

# THE BASICS

Where does it apply?

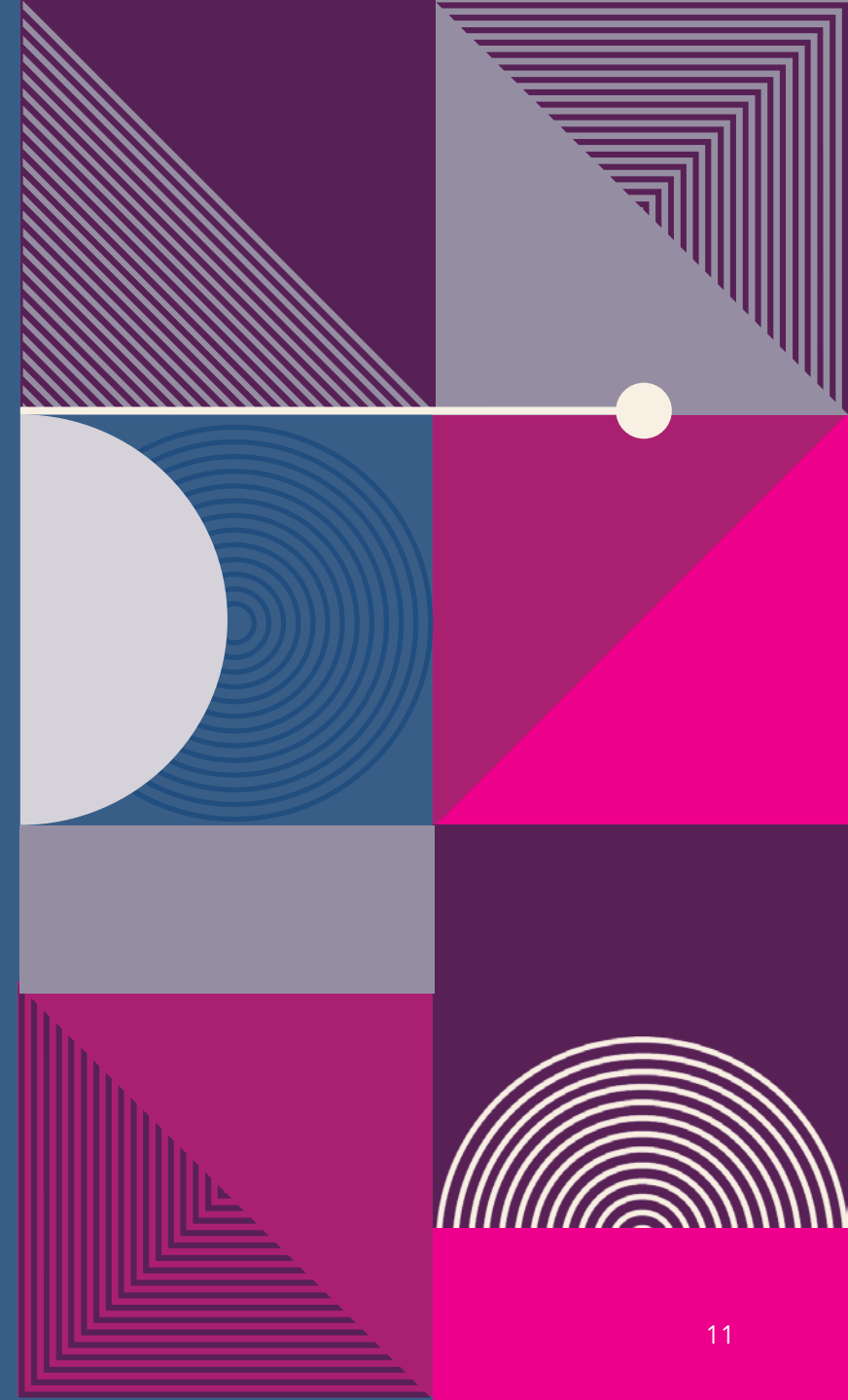
- New construction, for example for single family homes, renovations or replacement structures are exempt from the fee.
- When is the Fee Applied?
  - During the Building permit process.
  - How fees are used are reported during the Annual accountability reporting to ensure transparency.
- How Does It Work?
  - Straightforward calculation based on the number of units or square footage depending on the type of construction
  - Fee revenues go into a dedicated local account.
  - Projects are selected based on cost-effectiveness.

Every dollar is used here at home, with public oversight

# THE BASICS

Where does it apply?

- Other Air Districts implement similar programs. Rural Air Districts like Colusa County, El Dorado County, Imperial County and others implement a programs like Tehama Counties ISR program.





# ABOUT 2:11D



# MORE ABOUT 2:11D

## Protecting Local Control

- i. Without a program, state or federal mandates could be imposed.
- ii. This keeps solutions in local hands, tailored to Tehama's unique needs.
- iii. Achieves mandated emission reductions through incentives instead of more strict emission standards on local businesses.



# MORE ABOUT 2:11D

## Fairness

- i. Existing sources not burdened; new development pays its share of the impacts.
- ii. The fee is a small fraction of total development costs.
- iii. Between 2010 and 2025 CPI has increased by 54.6%. Increasing the fee by CPI is allowed by the regulation but has not been implemented.
- iv. Alternative Emission Plans are available for a person seeking full or partial exemption from the fee.



# MORE ABOUT 2:11D

## Direct Local Benefits

- Clean air supports agriculture and quality of life.
- Fewer poor air quality days= less strict regulations = fewer costs passed to local consumers.



# MORE ABOUT 2:11D

Protecting Local Control

- i. Without a program, state or federal mandates could be imposed.
- ii. This keeps solutions in local hands, tailored to Tehama's unique needs.





# RESULTS




# EXAMPLES OF PAST SUCCESSSES

- woodsmoke changeout program
  - Address emissions from older woodstoves
- Bike Lane Projects
  - Addresses the indirect emissions from vehicle trips for new constructions
- Bus shelters
  - Addresses the indirect emissions from vehicle trips for new constructions



# TAKEAWAYS

- The ISR program allows meets the counties mission statement.
  - The Indirect source fee program allows Tehama County to implement its General Plan
  - The Indirect Source Fee program allows the Air District to reduce emissions through incentive programs, without tightening regulations.
- 

An abstract geometric design on the left side of the slide. It features a dark blue background with various geometric shapes and patterns. A white circle is positioned near the top left. Below it, a light blue semi-circle is visible. To the right of the semi-circle, there is a pink triangle with diagonal lines. Further down, there is a pink square with a pattern of concentric lines. At the bottom, there is a pink triangle with a pattern of concentric lines. The overall design is modern and minimalist.

# QUESTIONS?