

**Verizon Site: WOODSON BRIDGE
Site Justification**



Coverage Objective: Proposed Wireless Facility in WOODSON BRIDGE CA

IMPROVED QUALITY OF SERVICE: Verizon Wireless existing network experienced *high data usage* in its Long Term Evolution (LTE) both 4G and 5G services in Corning and nearby areas of Loybas Hill, Richfield, Kirkwood, and Vina. These places are served by existing sites that are experiencing high volume of traffic. **WOODSON BRIDGE** proposed facility is located at 3710 Squaw Hill Rd, Corning CA 96021. This new wireless facility is designed to offload existing sites currently taking an average traffic load 76% of the normal operating condition of a site. These sites are projected to almost double its traffic to 135% by 2028. This new facility will help offload Verizon's existing network and provide enhanced coverage with improved in-vehicle service along I-5 and RTE 99 as shown in the map. Expanded service with strong dominant signal will improved user's experience that they can rely on to connect to people that matters most to them.

Verizon network is key to providing wireless service to its customers in the County of Tehama as well as supporting emergency services such as 911 calls. Proposed site will augment Verizon network in said areas especially during peak hours of data usage.



Confidential and proprietary materials for authorized Verizon personnel and outside agencies only. Use, disclosure or distribution of this material is not permitted to any unauthorized persons or third parties except by written agreement.

2

ATTACHMENT E

EXISTING 4G LTE AWS COVERAGE Map: WOODSON BRIDGE CLUSTER

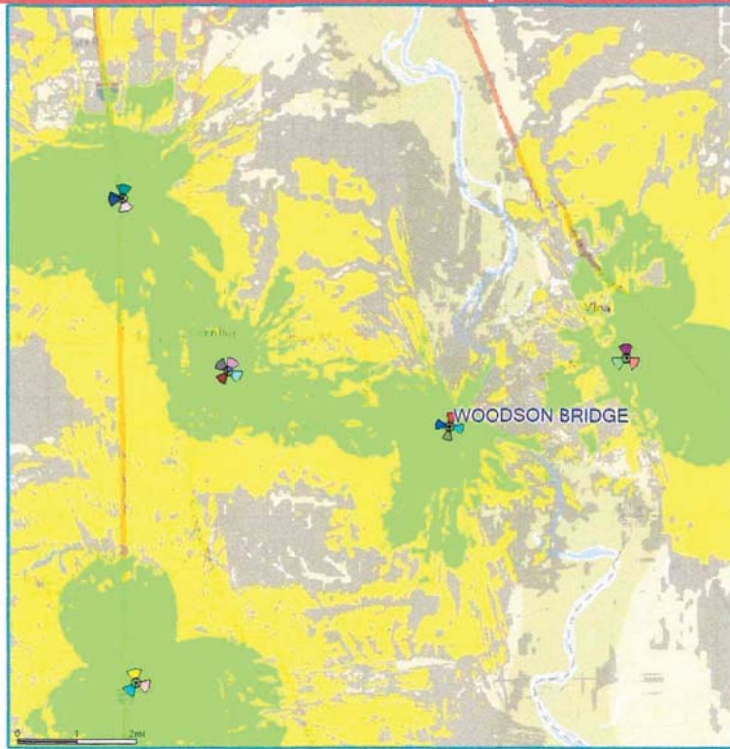


- Proposed Site (Inactive)
- INDOOR
- IN-VEHICLE
- OUTDOOR



Confidential and proprietary materials for authorized Verizon personnel and outside agencies only. Use, disclosure or distribution of this material is not permitted to any unauthorized persons or third parties except by written agreement.

FUTURE 4G LTE AWS COVERAGE Map: WOODSON BRIDGE CLUSTER

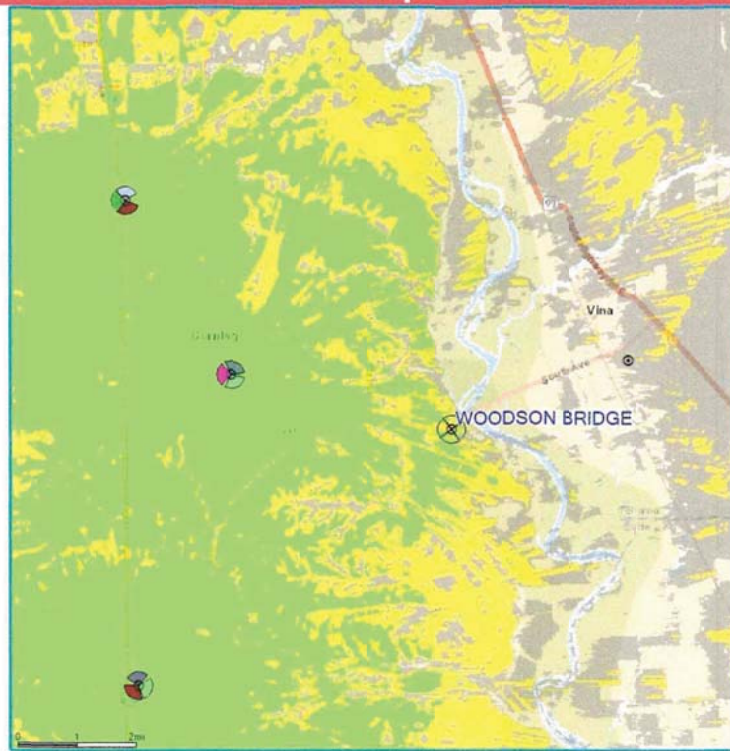


- Proposed Site (Active)
- INDOOR
- IN-VEHICLE
- OUTDOOR



Confidential and proprietary materials for authorized Verizon personnel and outside agencies only. Use, disclosure or distribution of this material is not permitted to any unauthorized persons or third parties except by written agreement.

EXISTING 5G COVERAGE Map: WOODSON BRIDGE CLUSTER

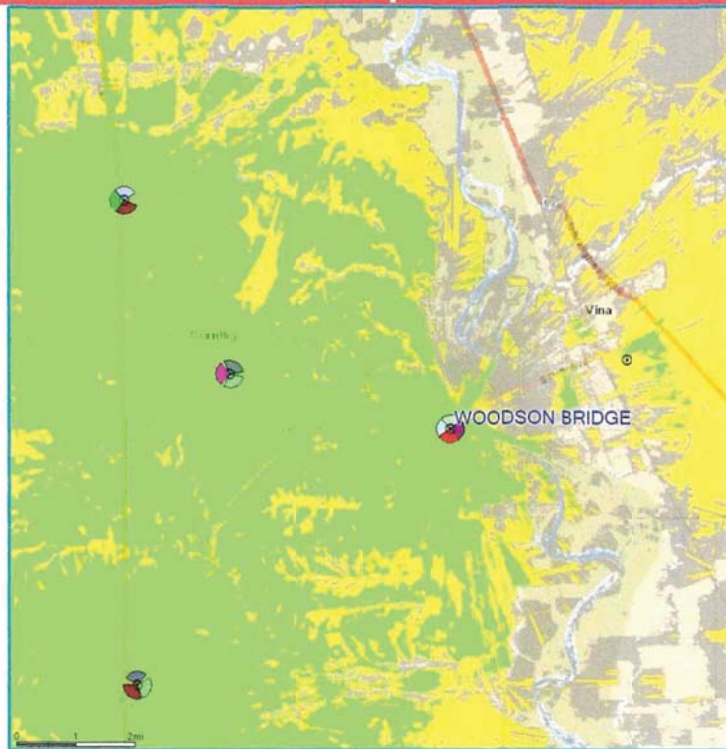


- ⊙ No C-BAND
- ⊗ Proposed Site (Inactive)
- ⊕ Existing On-Air
- INDOOR
- IN-VEHICLE
- OUTDOOR



Confidential and proprietary materials for authorized Verizon personnel and outside agencies only. Use, disclosure or distribution of this material is not permitted to any unauthorized persons or third parties except by written agreement.

FUTURE 5G COVERAGE Map: WOODSON BRIDGE CLUSTER



- No C-BAND
- Proposed Site (Active)
- Existing On-Air
- INDOOR
- IN-VEHICLE
- OUTDOOR



Confidential and proprietary materials for authorized Verizon personnel and outside agencies only. Use, disclosure or distribution of this material is not permitted to any unauthorized persons or third parties except by written agreement.