

# APPENDIX A

## Tehama GSA – Establishing Resolution/Agreements



## RESOLUTION NO. 05-2015

**A RESOLUTION OF THE BOARD OF DIRECTORS OF THE TEHAMA COUNTY  
FLOOD CONTROL AND WATER CONSERVATION DISTRICT ELECTING TO BE  
THE GROUNDWATER SUSTAINABILITY AGENCY FOR ALL THOSE PORTIONS OF  
THE ROSEWOOD, BOWMAN, SOUTH BATTLE CREEK, RED BLUFF, BEND,  
ANTELOPE, DYE CREEK, LOS MOLINOS, CORNING, VINA, AND COLUSA  
SUBBASINS LOCATED WITHIN TEHAMA COUNTY**

**WHEREAS**, the Legislature has adopted, and the Governor has signed into law, Senate Bills 1168 and 1319 and Assembly Bill 1739, known collectively as the Sustainable Groundwater Management Act of 2014; and

**WHEREAS**, the Sustainable Groundwater Management Act of 2014 went into effect on January 1, 2015; and

**WHEREAS**, the Sustainable Groundwater Management Act of 2014 enables the State Water Resources Control Board to intervene in groundwater basins unless a local public agency or combination of local public agencies form a Groundwater Sustainability Agency or Agencies (GSA) by June 30, 2017; and

**WHEREAS**, retaining local jurisdiction over water management and land use is essential to sustainably manage groundwater and to the vitality of Tehama County's economy, communities and environment, and

**WHEREAS**, any local public agency that has water supply, water management or land use responsibilities within a groundwater basin may elect to be the Groundwater Sustainability Agency for that basin; and

**WHEREAS**, the Tehama County Flood Control and Water Conservation District is a local public agency organized and existing under the Tehama County Flood Control and Water Conservation District Act (Statutes 1957, Chapter 1280; Water Code Appx., ch. 82); and

**WHEREAS**, under Section 3, subdivision (q) of said Act, the District is responsible for undertaking "any and every lawful act necessary to be done that sufficient water may be available for any present or future beneficial use or uses of lands or inhabitants within the district, including, but not limited to, the acquisition, storage, and distribution for irrigation, domestic, fire protection, municipal, commercial, industrial, recreational, and all other beneficial uses"; and

**WHEREAS**, under Section 3, subdivision (r) of said Act, the District is further authorized "to prevent interference with or diminution of, or to declare the rights in natural flow of any stream or surface or subterranean supply of waters used or useful for any purpose of the district or of common benefit to the lands within the district or to its inhabitants," and "to prevent unlawful exportation of water from the district," and "to prevent contamination, pollution, or otherwise rendering unfit for beneficial use, the surface or subsurface water used or useful in the district"; and

**WHEREAS**, the boundary and territory of the District are coextensive with the exterior boundaries of the County of Tehama; and

**WHEREAS**, the District overlies all those portions of the Rosewood, Bowman, South Battle Creek, Red Bluff, Bend, Antelope, Dye Creek, Los Molinos, Corning, Vina, and Colusa subbasins located within Tehama County; and

**WHEREAS**, Section 10723.2 of the Sustainable Groundwater Management Act of 2014 requires that a GSA consider the interests of all beneficial uses and users of groundwater, as well as those responsible for implementing groundwater sustainability plans; and

**WHEREAS**, Section 10723.8 of the Sustainable Groundwater Management Act of 2014 requires that a local agency electing to be a GSA notify the Department of Water Resources of its election and its intent to undertake sustainable groundwater management within a basin; and

**WHEREAS**, the District held a public hearing on this date after publication of notice pursuant to Government Code section 6066 to consider adoption of this Resolution; and

**WHEREAS**, it would be in the public interest of the people of Tehama County for the District to become the groundwater sustainability agency for all those portions of the Rosewood, Bowman, South Battle Creek, Red Bluff, Bend, Antelope, Dye Creek, Los Molinos, Corning, Vina, and Colusa subbasins located within Tehama County; and

**WHEREAS**, the District and other local public agencies have a long history of coordination and cooperation on water management; and

**WHEREAS**, it is the intent of the District to work cooperatively with other local agencies to manage the aforementioned groundwater basins in a sustainable fashion;

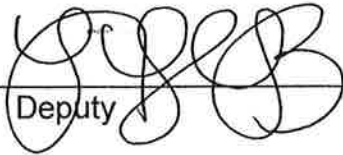
**NOW, THEREFORE, BE IT RESOLVED**, that the Tehama County Flood Control and Water Conservation District hereby elects to become the Groundwater Sustainability Agency for all those portions of the Rosewood (5-06.02), Bowman (5-06.01), South Battle Creek (5-06.06), Red Bluff (5-21.50), Bend (5-21.53), Antelope (5-21.54), Dye Creek (5-21.55), Los Molinos (5-21.56), Corning (5-21.51), Vina (5-21.57), and Colusa (5-21.52) subbasins located within Tehama County.

**BE IT FURTHER RESOLVED** that the proposed boundaries of the basins that the District intends to manage under the Sustainable Groundwater Management Act of 2014 shall be the entirety of the boundaries for the aforementioned subbasins, as set forth in California Department of Water Resources Bulletin 118 (updated in 2003), that lie within the County of Tehama; provided that the Executive Director is authorized and directed to evaluate whether basin boundaries should be adjusted in a manner that will improve the likelihood of achieving sustainable groundwater management, and communicate the results of that evaluation to the Board of Directors and the Department of Water Resources; and



DATED: This 3<sup>rd</sup> day of November, 2015.

JENNIFER A. VISE, County Clerk and ex-officio Clerk of the Board of Directors of the Tehama County Flood Control and Water Conservation District, State of California.

By  \_\_\_\_\_  
Deputy



**COUNTY OF TEHAMA**  
**DEPARTMENT OF PUBLIC WORKS**

9380 San Benito Avenue  
Gerber, CA 96035-9701  
(530) 385-1462  
(530) 385-1189 Fax

Road Commissioner  
Surveyor  
Engineer  
Public Transit  
Flood Control & Water  
Conservation District  
Sanitation District No. 1

November 4, 2015

F-15-032

Mark Nordberg, GSA Project Manager  
Sustainable Groundwater Management Section  
California Department of Water Resources  
P.O. Box 942836  
Sacramento, California 94236-0001

**Re: Notice of Intent to Become a Groundwater Sustainability Agency for all eleven (11)  
Groundwater Subbasins located within Tehama County.**

Dear Mr. Nordberg,

Pursuant to Water Code Section 10723.8, the Tehama County Flood Control and Water Conservation District (DISTRICT), hereby notifies the California Department of Water Resources (DWR) of its intent to become the Groundwater Sustainability Agency (GSA) for all portions of the eleven Groundwater Subbasins located within Tehama County (See Exhibit A). All applicable information in Water Code Section 10723.8(a) is provided in this notification. The DISTRICT intends to manage the following subbasins or portions of those subbasins located within the County:

- Rosewood (Subbasin number 5-6.02)
- Bowman (Subbasin number 5-6.01)
- South Battle Creek (Subbasin number 5-6.06)
- Red Bluff (Subbasin number 5-21.50)
- Bend (Subbasin number 5-21.53)
- Antelope (Subbasin number 5-21.54)
- Dye Creek (Subbasin number 5-21.55)
- Los Molinos (Subbasin number 5-21.56)
- Corning (Subbasin number 5-21.51)
- Vina (Subbasin number 5-21.57)
- Colusa (Subbasin number 5-21.52)

The Boundaries of the subbasins are as identified in Bulletin 118, Update 2003. Tehama County currently has 1 high priority subbasin: Vina; 7 medium priority subbasins: Bowman, Red Bluff, Antelope, Dye Creek, Los Molinos, Corning, and Colusa; and 3 low priority subbasins: Rosewood, South Battle Creek, and Bend. Although not required by the Sustainable Groundwater Management Act of 2014 (SGMA), the DISTRICT also proposes to become the GSA and complete a Groundwater

Sustainability Plan (GSP) for the 3 low priority subbasins in order to facilitate a holistic approach to managing groundwater in Tehama County. The DISTRICT is not aware of any other GSAs operating within the groundwater basins listed above.

The DISTRICT boundary is identified as the area included within the exterior boundary of the County of Tehama and further identified in the California Water Code Appendix 82-1. The DISTRICT was enacted in 1957 to provide for the control and conservation of flood and storm waters and the protection of watercourses, watersheds, public highways, life and property from damage or destruction from such waters; to provide for the acquisition, retention, and reclaiming of drainage, storm, flood, and other waters and to save, conserve, and distribute such waters for beneficial use in said DISTRICT; to authorize the incurring of indebtedness, the issuance of sale of bonds, and the levying and collection of tax assessments on property within said DISTRICT and in the respective zones thereof; to define the powers of said DISTRICT; to provide for the government, management, and operation of said DISTRICT and for the acquisition and construction of property and works to carry out the purposes of the DISTRICT. The DISTRICT Board of Directors is composed of members of the County Board of Supervisors, which are elected by Supervisorial District. The DISTRICT operates under authority of the Board of Directors with management and oversight delegated to the Tehama County Department of Public Works. The Public Works Director serves as the Executive Director of the DISTRICT. Additionally, no new bylaws, ordinances, or other authorities were adopted in conjunction with the establishment of the GSA.

The DISTRICT has been actively managing groundwater throughout the County for the past 20 years. The County first adopted a Groundwater Management Plan in 1996 and has recently updated this plan in 2012. This plan has been supported extensively throughout the County and will serve as the foundation for the GSP. The DISTRICT has also completed Technical Memorandums that include Basin Management Objectives, such as Groundwater Trigger Levels and Awareness Actions for each of the subbasins located within the County (2008); Countywide Water Inventory & Analysis (2003); Small Water Systems Drought Vulnerability Assessment (2005); Summary Report for Groundwater Recharge Area Location Study (2011), and participated in the California Statewide Groundwater Elevation Monitoring (CASGEM) program since 2010. The DISTRICT installed its first two multi-completion groundwater monitoring wells with assistance from DWR in 2004, and has since installed an additional six wells. The DISTRICT continues to monitor these wells several times a year uploading the data to the CASGEM database. These documents can be located on the DISTRICT website <http://www.tehamacountypublicworks.ca.gov/Flood/>. The DISTRICT also has an active Technical Advisory Committee (TAC) that reports to the DISTRICT Board which is comprised of representatives from Agriculture, Domestic/Industrial Water Providers, Natural Resources, and representatives from the cities of Corning, Red Bluff, and Tehama. This TAC meets at least quarterly and has helped review and provided comment on the previously mentioned documents.

The DISTRICT held a public hearing concerning the formation of the GSA on June 2, 2015. During this meeting several agencies expressed an interest in participating in the GSA governance structure. The DISTRICT developed a governance proposal (See Exhibit C) which included an eleven member Groundwater Commission (Commission) comprised of city and District representatives and other stakeholders. The commission will have broad responsibility for all aspects of GSP development and implementation, and will have decision-making authority regarding permits and enforcement

matters. Letters of support (See Exhibit D) for the proposed Governance Proposal have been received from the City of Corning, City of Red Bluff, City of Tehama, El Camino Irrigation District, and the Rio Alto Water District. These agencies which represent some of the larger groundwater pumpers within the County will have an established seat on the Commission along with the Los Molinos Community Services District. The additional 5 members of the Commission will represent each of the five County Supervisorial Districts, these representatives will be nominated by the seated Commission members and confirmed by the DISTRICT Board of Directors.

The DISTRICT caused notice of its election to serve as a GSA to be published in the Red Bluff *Daily News* on October 21 and 31 (See Exhibit E), as provided by Water Code Section 10723(b) and Government Code Section 6066. Courtesy copies of the notice were also emailed or mailed to:

- City of Red Bluff
- City of Corning
- City of Tehama
- Anderson Cottonwood Irrigation District
- Rio Alto Water District
- Thomes Creek Water District
- Corning Water District
- Deer Creek Irrigation District
- El Camino Irrigation District
- Gerber Las Flores Community Services District (CSD)
- Glenn-Colusa Irrigation District
- Los Molinos Mutual Water Company
- Proberta Water District
- Stanford Vina Ranch Irrigation District
- Paskenta CSD
- Kirkwood Water District
- Orland Unit Water Users Association
- Rancho Tehama Association
- Lake California Property Owners Association
- Mineral Water Company
- Red Bluff Tree Farm
- Golden Meadows Estates CSD
- Los Molinos CSD
- Reeds Creek Estates CSD
- Rio Ranch Estates CSD
- Paskenta Band of Nomlaki Indians
- Tehama Colusa Canal Authority
- Resource Conservation District of Tehama County
- Cattlemen's Association
- Cattlewomen's Association
- Shasta-Tehama Watershed Education Coalition
- Deer Creek Watershed Conservancy
- Mill Creek Watershed Conservancy
- Natural Resources Conservation Service
- California Department of Forestry and Fire Protection
- California Department Of Water Resources
- University of California Cooperative Extension
- Tehama County AB3030 Technical Advisory Committee Members
- Tehama County Board of Supervisors
- Tehama County Administration
- Tehama County, County Counsel
- Tehama County Public Works
- Tehama County Farm Bureau
- Tehama County Environmental health
- Tehama County Planning Department
- Tehama County Sherriff's Office
- Butte County
- Glenn County
- Shasta County

On November 3, 2015, the DISTRICT Board held a second public hearing concerning the formation of the GSA and unanimously approved Resolution No. 05-2015 (See Exhibit B), which directed DISTRICT Staff to complete and submit this Notice of Intent.

Pursuant to Water Code Section 10723.8(a)(4) the DISTRICT will consider the interest of all beneficial uses and users of groundwater, as well as those responsible for implementing GSPs. The Groundwater Commission described in Exhibit C, which the DISTRICT has committed to promptly establish, was carefully designed with stakeholder input to ensure that those parties listed in section 10723.2 have an active, long-term role in developing and implementing the GSP and GSA rules and regulations. In addition, the DISTRICT has communicated with parties interested in the sustainable management of groundwater in the subbasins, and will continue to solicit feedback from those parties as the plan is developed. These interests include, but are not limited to all of the following:

- **Holders of overlying groundwater rights:**
  - **Agricultural users:** The proposed GSA area contains a significant amount of agricultural users of groundwater. Some of the agricultural users get their water from the water/irrigation districts listed above, but a large portion of the independent pumpers do not have an organized association that represents them. The DISTRICT will perform outreach during GSP development with the assistance of the Tehama County Farm Bureau, the University of California Cooperative Extension, and the Resource Conservation District of Tehama County to reach this group.
  - **Domestic well owners:** A majority of the residents living within the proposed GSA area use groundwater to fulfill their domestic water needs. The DISTRICT will hold public meetings in several locations throughout the county during the GSP development process to gather input from this demographic. The DISTRICT will work with the Tehama County Environmental Health Department and the Community Action Partnership to assist with outreach to this group.
- **Municipal well operators:** The Cities of Corning, Red Bluff, and Tehama will have representatives on both the Groundwater Commission and the TAC. These three cities and their constituents are also directly represented by their Board of Directors members whose Supervisorial Districts overlay each city's jurisdictions. All three cities will have the opportunity to participate in the GSP development and in future actions taken by the Groundwater Commission.
- **Public water systems:** The DISTRICT provided courtesy notice of their intention to serve as the GSA to the Public Water Systems listed above, and will continue to communicate with and solicit feedback from these agencies as the GSP is developed.
- **Local land use planning agencies:**
  - **Butte County:** The proposed GSA boundary would split the Vina Subbasin which extends into Butte County. The DISTRICT has met with the Butte County Department of Water and Resource Conservation (BCDWRC), which is the agency most likely to become the GSA for the portion of the Vina Subbasin which lies outside Tehama County. The DISTRICT has coordinated with BCDWRC on

groundwater monitoring activities in the Vina Subbasin over the past 2 decades. Staff from both agencies have agreed to coordinate our efforts on managing the Vina Subbasin through a Memorandum of Understanding (MOU), Coordination Agreement, or similar type document, while each becoming a GSA and submitting a GSP for the portions of the subbasin located within their respective Counties. The District may submit for a Basin Boundary Adjustment to split the subbasin at the county line once DWR releases the regulations on Basin Boundary Adjustments in January 2016.

- Glenn County: The proposed GSA boundary would split both the Colusa and Corning Subbasins which extend into Glenn County. The DISTRICT is planning to submit a Boundary Basin Adjustment to incorporate the small segment of the Colusa Subbasin that lies within Tehama County, into the Corning Subbasin. This 1,300 acre area with 10 individual landowners would get better representation by their local elected officials on the DISTRICT Board, then to be grouped into the large 918,380 acre Colusa Subbasin that spans four counties. The DISTRICT will coordinate with the GSA responsible for the portion of the Colusa subbasin that borders Tehama County. The DISTRICT has met with the Glenn County Department of Agriculture, which is the agency most likely to become the GSA for the portion of the Corning Subbasin which lies outside Tehama County. Staff from both agencies have agreed to coordinate our efforts on managing the Corning Subbasin through a MOU, Coordination Agreement, or similar type document, while each becoming a GSA and submitting a GSP for the portions of the subbasin located within their respective Counties. The DISTRICT may submit for a Basin Boundary Adjustment to split the Corning subbasin at the county line once DWR releases the regulations on Basin Boundary Adjustments in January 2016.
- Shasta County: While Shasta and Tehama Counties do not share any subbasins, the three northern subbasins in Tehama County are part of the Redding Groundwater Basin. The DISTRICT will continue to monitor the GSA development process in Shasta County, and will coordinate with the Groundwater Sustainability Agency(s) that form in subbasins adjacent to Tehama County.
- Other Water and Irrigation Districts outside the GSA boundaries: The DISTRICT provided courtesy notice of their intention to serve as the GSA to the Anderson-Cottonwood Irrigation District and the Glenn-Colusa Irrigation District, and will continue to communicate with and solicit feedback from these neighboring agencies as the GSP is developed.
- **Environmental users of groundwater**: N/A
- **Surface water users, if there is a hydrologic connection between surface and groundwater bodies**: The surface water users listed above were provided courtesy notice of the DISTRICT's intention to serve as the GSA and will be included in the GSP planning process.
- **The federal government, including, but not limited to, the military and managers of federal lands**: NRCS and the Bureau of Land Management (BLM) will be coordinated with during the GSP development process. The BLM owns land in the Northern portion of the County that offers multi-use recreational opportunities. The NRCS works with landowners

throughout the County and helps to implement on farm conservation practices.


- **California Native American Tribes:** The Paskenta Band of Nomlaki Indians have a Reservation located in the Corning Subbasin and were provided a courtesy notice of the DISTRICT's intention to serve as the GSA. They will also be included in the GSP planning process.
- **Disadvantaged communities, including, but not limited to, those served by private domestic wells or small community water systems:** A majority of the communities located within the proposed GSA Boundary are classified as Disadvantaged Communities and a majority of them are served by private domestic wells or small community water systems. The DISTRICT will work with the Tehama County Environmental Health Department and the Community Action Partnership to perform outreach and gather information from these communities to incorporate into the GSP.

The DISTRICT and other interested stakeholders roles and responsibilities will be further defined in the GSP. The DISTRICT welcomes feedback during this process from the state and any of the agencies or organizations listed herein. If the Department of Water Resources requires anything further prior to the acceptance of this notification of the DISTRICT's election to serve as the GSA for the eleven subbasins or portions of those subbasins located within Tehama County, please contact Ryan Teubert, the Flood Control/Water Resources Manager at (530)-385-1462 x3020 or [rteubert@tcpw.ca.gov](mailto:rteubert@tcpw.ca.gov).

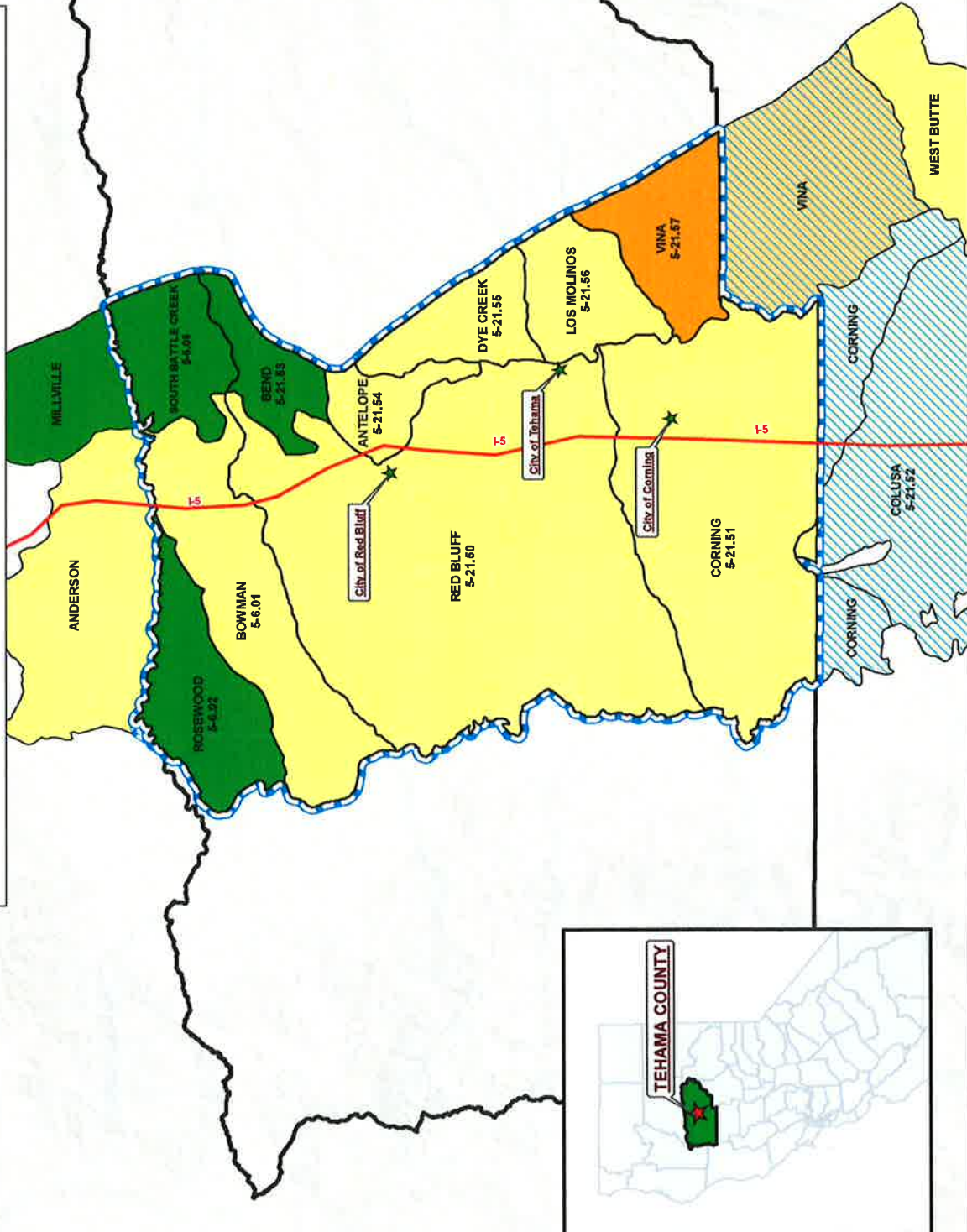
Sincerely,

Gary Antone, Executive Director  
Tehama County Flood Control and  
Water Conservation District

By

  
\_\_\_\_\_  
Ryan Teubert, Flood Control/Water Resources Manager  
Tehama County Flood Control and  
Water Conservation District

TEHAMA COUNTY FLOOD CONTROL & WATER CONSERVATION DISTRICT  
 PROPOSED GROUNDWATER SUSTAINABILITY MAP



**Legend**

- County Boundary
- Proposed GSA Boundary

**Tehama County Basins**

**PRIORITY**

- HIGH
- MEDIUM
- LOW

**Surrounding Basins**

**BASIN NAME**

- ANDERSON
- CORNING - SHARED BASIN
- MILLVILLE
- VINA - SHARED BASIN
- WEST BUTTE
- COLUSA - SHARED BASIN



Esri, DeLorme, GEBCO, NOAA, NGDC, and other contributors

## RESOLUTION NO. 05-2015

**A RESOLUTION OF THE BOARD OF DIRECTORS OF THE TEHAMA COUNTY  
FLOOD CONTROL AND WATER CONSERVATION DISTRICT ELECTING TO BE  
THE GROUNDWATER SUSTAINABILITY AGENCY FOR ALL THOSE PORTIONS OF  
THE ROSEWOOD, BOWMAN, SOUTH BATTLE CREEK, RED BLUFF, BEND,  
ANTELOPE, DYE CREEK, LOS MOLINOS, CORNING, VINA, AND COLUSA  
SUBBASINS LOCATED WITHIN TEHAMA COUNTY**

**WHEREAS**, the Legislature has adopted, and the Governor has signed into law, Senate Bills 1168 and 1319 and Assembly Bill 1739, known collectively as the Sustainable Groundwater Management Act of 2014; and

**WHEREAS**, the Sustainable Groundwater Management Act of 2014 went into effect on January 1, 2015; and

**WHEREAS**, the Sustainable Groundwater Management Act of 2014 enables the State Water Resources Control Board to intervene in groundwater basins unless a local public agency or combination of local public agencies form a Groundwater Sustainability Agency or Agencies (GSA) by June 30, 2017; and

**WHEREAS**, retaining local jurisdiction over water management and land use is essential to sustainably manage groundwater and to the vitality of Tehama County's economy, communities and environment, and

**WHEREAS**, any local public agency that has water supply, water management or land use responsibilities within a groundwater basin may elect to be the Groundwater Sustainability Agency for that basin; and

**WHEREAS**, the Tehama County Flood Control and Water Conservation District is a local public agency organized and existing under the Tehama County Flood Control and Water Conservation District Act (Statutes 1957, Chapter 1280; Water Code Appx., ch. 82); and

**WHEREAS**, under Section 3, subdivision (q) of said Act, the District is responsible for undertaking "any and every lawful act necessary to be done that sufficient water may be available for any present or future beneficial use or uses of lands or inhabitants within the district, including, but not limited to, the acquisition, storage, and distribution for irrigation, domestic, fire protection, municipal, commercial, industrial, recreational, and all other beneficial uses"; and

**WHEREAS**, under Section 3, subdivision (r) of said Act, the District is further authorized "to prevent interference with or diminution of, or to declare the rights in natural flow of any stream or surface or subterranean supply of waters used or useful for any purpose of the district or of common benefit to the lands within the district or to its inhabitants," and "to prevent unlawful exportation of water from the district," and "to prevent contamination, pollution, or otherwise rendering unfit for beneficial use, the surface or subsurface water used or useful in the district"; and

**WHEREAS**, the boundary and territory of the District are coextensive with the exterior boundaries of the County of Tehama; and

**WHEREAS**, the District overlies all those portions of the Rosewood, Bowman, South Battle Creek, Red Bluff, Bend, Antelope, Dye Creek, Los Molinos, Corning, Vina, and Colusa subbasins located within Tehama County; and

**WHEREAS**, Section 10723.2 of the Sustainable Groundwater Management Act of 2014 requires that a GSA consider the interests of all beneficial uses and users of groundwater, as well as those responsible for implementing groundwater sustainability plans; and

**WHEREAS**, Section 10723.8 of the Sustainable Groundwater Management Act of 2014 requires that a local agency electing to be a GSA notify the Department of Water Resources of its election and its intent to undertake sustainable groundwater management within a basin; and

**WHEREAS**, the District held a public hearing on this date after publication of notice pursuant to Government Code section 6066 to consider adoption of this Resolution; and

**WHEREAS**, it would be in the public interest of the people of Tehama County for the District to become the groundwater sustainability agency for all those portions of the Rosewood, Bowman, South Battle Creek, Red Bluff, Bend, Antelope, Dye Creek, Los Molinos, Corning, Vina, and Colusa subbasins located within Tehama County; and

**WHEREAS**, the District and other local public agencies have a long history of coordination and cooperation on water management; and

**WHEREAS**, it is the intent of the District to work cooperatively with other local agencies to manage the aforementioned groundwater basins in a sustainable fashion;

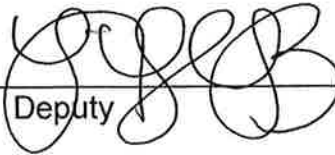
**NOW, THEREFORE, BE IT RESOLVED**, that the Tehama County Flood Control and Water Conservation District hereby elects to become the Groundwater Sustainability Agency for all those portions of the Rosewood (5-06.02), Bowman (5-06.01), South Battle Creek (5-06.06), Red Bluff (5-21.50), Bend (5-21.53), Antelope (5-21.54), Dye Creek (5-21.55), Los Molinos (5-21.56), Corning (5-21.51), Vina (5-21.57), and Colusa (5-21.52) subbasins located within Tehama County.

**BE IT FURTHER RESOLVED** that the proposed boundaries of the basins that the District intends to manage under the Sustainable Groundwater Management Act of 2014 shall be the entirety of the boundaries for the aforementioned subbasins, as set forth in California Department of Water Resources Bulletin 118 (updated in 2003), that lie within the County of Tehama; provided that the Executive Director is authorized and directed to evaluate whether basin boundaries should be adjusted in a manner that will improve the likelihood of achieving sustainable groundwater management, and communicate the results of that evaluation to the Board of Directors and the Department of Water Resources; and



DATED: This 3<sup>rd</sup> day of November, 2015.

JENNIFER A. VISE, County Clerk and ex-officio Clerk of the Board of Directors of the Tehama County Flood Control and Water Conservation District, State of California.

By  \_\_\_\_\_  
Deputy

## Tehama County Groundwater Sustainability Agency (GSA)

### GSA Governing Body - Tehama County Flood Control and Water Conservation District (FCWCD) Board of Directors

1. Final approval authority for GSP and any future amendments, and all GSA ordinances, rules, regulations, and fees.
2. Primary responsibility for funding, resources, and staffing. (Cities/Districts will not be requested to provide or commit funding in order to participate in the Groundwater Commission.)
  - FCWCD will provide staff assistance to Groundwater Commission and Board of Directors throughout the GSP development and implementation process.
  - Where necessary, the Board of Directors will provide additional resources from FCWCD's existing funding or grant opportunities pursued by FCWCD.
  - The Board of Directors will apply for and receive grants to fund GSA activities (with the Commission's recommendation), including responsibility for executing and implementing grant contracts and associated requirements.
  - Further revenue measures, if any, would be reviewed by the Commission prior to adoption by the Board of Directors (and will not be based on GSA participation).
3. Hear and decide appeals (if any) from decisions of the Groundwater Commission on permits, similar entitlements, and enforcement matters.
4. Confirm appointments of the five "Supervisorial District" members of the Groundwater Commission (upon recommendation of the Commission).

### Groundwater Commission (Similar to Planning Commission)

1. Develop GSP and any future amendments, and all GSA ordinances, rules, and regulations, including holding public hearings and making final recommendations to Board of Directors.
2. Conduct investigations to determine the need for groundwater management, monitor compliance and enforcement, propose and update fees and making final recommendations to Board of Directors.
3. Review all proposed grant applications, and advise Board of Directors regarding grant funding opportunities.
4. Decision-making authority for permits or similar entitlements issued by the GSA, e.g., well spacing (with appeal).
5. Make quasi-judicial decisions in GSA enforcement matters (with appeal).
6. Membership:
  - a. 1- City of Corning (Appointed by City)
  - b. 1- City of Red Bluff (Appointed by City)
  - c. 1- City of Tehama (Appointed by City)
  - d. 1- El Camino Irrigation District (Appointed by District)
  - e. 1- Los Molinos Community Services District (Appointed by District)
  - f. 1- Rio Alto Water District (Appointed by District)
  - g. 5- 1 Representative from each County Supervisorial District
    - i. Recommendations to be made by the seated Groundwater Commission members and confirmed by the FCWCD Board of Directors.
    - ii. Appointees will be expected to meet certain qualifications:
      - 2 members should represent the interests of surface water agencies or districts;
      - 2 members should represent the interests of private pumpers;
      - 1 member will be an "at large" representative;
      - No agency or district shall be represented by more than 1 member on the Groundwater Commission.

### AB3030 Technical Advisory Committee - Provides technical assistance as needed.



# City of Corning

794 Third St. Corning, CA 96021 (530) 824-7020 Fax (530) 824-2489



Ryan Teubert, CFM  
Tehama County Flood Control & Water Resource District  
9380 San Benito Ave.  
Gerber, CA 96035

August 14, 2015

Re: Groundwater Sustainability Agency Governance Structure

Dear Mr. Teubert,

Thank you for appearing at the August 11, 2015 City Council meeting and presenting the information regarding the Sustainability Groundwater Management Act. Your presentation was very well done and informative.

As you know, after your presentation, the consensus of the Corning City Council was to concur with the Governance structure that you had proposed where the Flood and Water Conservation District Board would serve as the Groundwater Sustainability Agency and the cities, including the City of Corning would have seats on the Groundwater Commission.

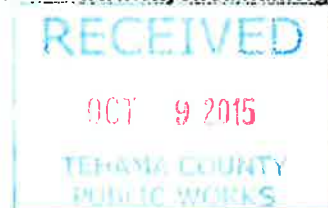
Please call me if you have any additional questions regarding this matter.

John L. Brewer, AICP  
City Manager



# CITY OF RED BLUFF

555 Washington Street Red Bluff, California 96080 (530) 527-2605 Fax (530) 529-6878 [www.cityofredbluff.org](http://www.cityofredbluff.org)



October 7, 2015

Tehama County Public Works  
Attention: Gary Antone  
9380 San Benito Avenue  
Gerber, CA 96035-9701

RE: County GSA Proposal

Dear Gary:

At its meeting of October 6, 2015, the Red Bluff City Council voted to support designation of the Tehama County Flood Control and Water Conservation District (FCWCD) as the Groundwater Sustainability Agency (GSA) for Tehama County. "Funding, resources, and staffing will be the primary responsibility of FCWCD" as the GSA is created and a Groundwater Sustainability Plan (GSP) is drafted and implemented. (See, 9-29-2015 FCWCD presentation to Red Bluff City Council). Nevertheless, the City will remain actively engaged on this issue to assure that the City's needs and concerns are carefully considered by the FCWCD moving forward. Please provide the undersigned with written advance notice of all meetings of the FCWCD Board, as well as copies of all agendas and back up materials.

## **Background**

The City of Red Bluff is the largest supplier of domestic groundwater in Tehama County. The City supplies water to 4,756 different metered water connections, serving a population of 15,000 residents. The City operates a network of 13 municipal water wells.

The City Water Department was established in 1921 and employs 7 full-time employees (not including management and administrative staff). The Water Department's operating budget for 2015/2016 is approximately \$2.1 million. The City extracts, pumps and delivers 1,178,953,000 gallons of groundwater per year.

The City routinely collects data regarding all aspects of the City's water supply and use thereof including water quality monitoring. The City brings the resources of the largest domestic water supplier in the County to the table as an active, participating member of the GSA.

## **GSA Requirements**

“Any local agency or combination of local agencies overlying a groundwater basin may elect to be a groundwater sustainability agency for that basin.” (Water Code § 10723(a).) A GSA “*shall* consider the interests of all beneficial uses and users of groundwater, as well as those responsible for implementing groundwater sustainability plans. These interests include [ ] all of the following: [ ] (b) Municipal well operators. (c) Public water systems. (d) Local land use planning agencies. [ ]” (§10723.2)

A notification of intent to form a GSA must include a list of interested parties including municipal well operators, public water systems and local land use planning agencies and “an explanation of how their interests will be considered in the development and operation of the groundwater sustainability agency and the development and implementation of the agency’s sustainability plan.” (§10723.8(a)(4).) A combination of local agencies may form a groundwater sustainability agency through use of a joint powers agreement or other legal agreement. (§10723.6(a))

The statutory mandate makes clear that the City’s interests as the largest supplier of domestic groundwater in the County must be considered. In fact, the notice of intent to form a GSA must explain how the City’s interests will be considered in the development and operation of the GSA.

## **Conclusion**

The City looks forward to working cooperatively with the FCWCD to implement the requirements of the Groundwater Sustainability Act.

If you have any comments or questions, please contact me or Bruce Henz.

Very truly yours,



Richard L. Crabtree

cc: City Council  
Board of Supervisors  
County Counsel

# City of Tehama

Incorporated 1908

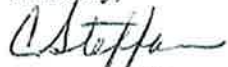
Post Office Box 70  
Tehama, CA 96090  
Phone: (530)384-1501  
Fax: (530)384-1625

September 10, 2015

Ryan Teubert, CFM  
Tehama Co. Flood Control &  
Water Resource Manager  
9380 San Benito Ave.

At its meeting on September 8, 2015, the Tehama City Council voted to accept the proposal received from you for the Tehama County Groundwater Sustainability Agency (GSA). We appreciate your leadership in bring the various organizations together for this important effort.

Sincerely,



Carolyn Steffan  
City Clerk/Administrator

RECEIVED

SEP 14 2015

TEHAMA COUNTY  
PUBLIC WORKS

**El Camino Irrigation District**  
**8451 Hwy. 99-W**  
**Gerber, CA 96035**  
**530-385-1559**  
**530-385-1503 Fax**  
**ecid1559@att.net**

Ryan Teubert, CFM  
Tehama County Flood Control & Water Resource Manager

We have read and discussed the Tehama County Groundwater Sustainability Agency proposal.

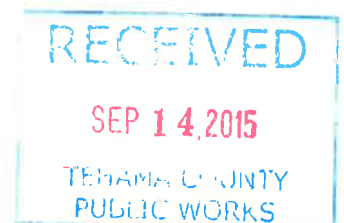
As the Board for El Camino Irrigation District we are approving the proposal as written and appointing District Manager Mark Weber to the Groundwater Commission.

  
Mike Gividen-District 1

  
Kris Lamkin-District 2

  
Rich Sol-Director 3

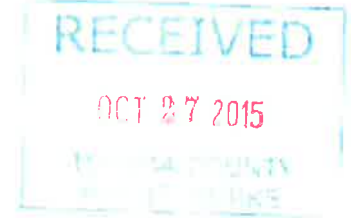
  
Leland Hogan-District 4 Chairman





# Rio Alto Water District

22099 River View Drive, Cottonwood, California 96022  
Telephone 530-347-3835 • Fax 530-347-1007



October 22, 2015

Ryan Teubert, CFM  
Tehama County Flood Control & Water Conservation District  
9380 San Benito Ave.  
Gerber, CA 96035

Re: Letter of Support

Dear Ryan:

The Board of Directors of the Rio Alto Water District is in support of Tehama Flood Control & Water Conservation District forming and acting as the Groundwater Sustainability Agency(GSA) for the groundwater basins within Tehama County.

We approve of the proposed governance structure and look forward to participating in the Groundwater Commission. The Board acknowledges that Tehama County Flood Control and Water Conservation District was instrumental in developing a Groundwater Management Plan in compliance with AB3030, and as such are the most qualified candidate to form and act as the GSA. Thank you for taking the lead in this task.

Sincerely,

A handwritten signature in cursive script that reads "Martha Slack".

Martha Slack  
General Manager

## NOTICE OF PUBLIC HEARING

NOTICE IS HERBY GIVEN that on November 3, 2015, at 1:30 PM, or soon thereafter as may be heard, in the Board of Supervisors Chambers located at 727 Oak St., Red Bluff, California, the Tehama County Flood Control and Water Conservation District (District) Board of Directors will conduct a public hearing to determine whether to adopt a resolution directing the District to submit a Notice of Intent to the California Department of Water Resources stating that the District will be the Groundwater Sustainability Agency (Agency) for all portions of the eleven (11) Groundwater Subbasins located within Tehama County.

The Sustainable Groundwater Management Act (SGMA) became effective on January 1, 2015 and established a new structure for managing California's groundwater resources at a local level. SGMA mandates that all groundwater basins identified in Bulletin 118 must be managed by a Groundwater Sustainability Agency by June 30, 2017. Each Agency will then develop a Groundwater Sustainability Plan (Plan) by January 30, 2022, which will include measurable objectives and milestones that assist the Agencies in achieving groundwater sustainability within 20 years of Plan adoption.

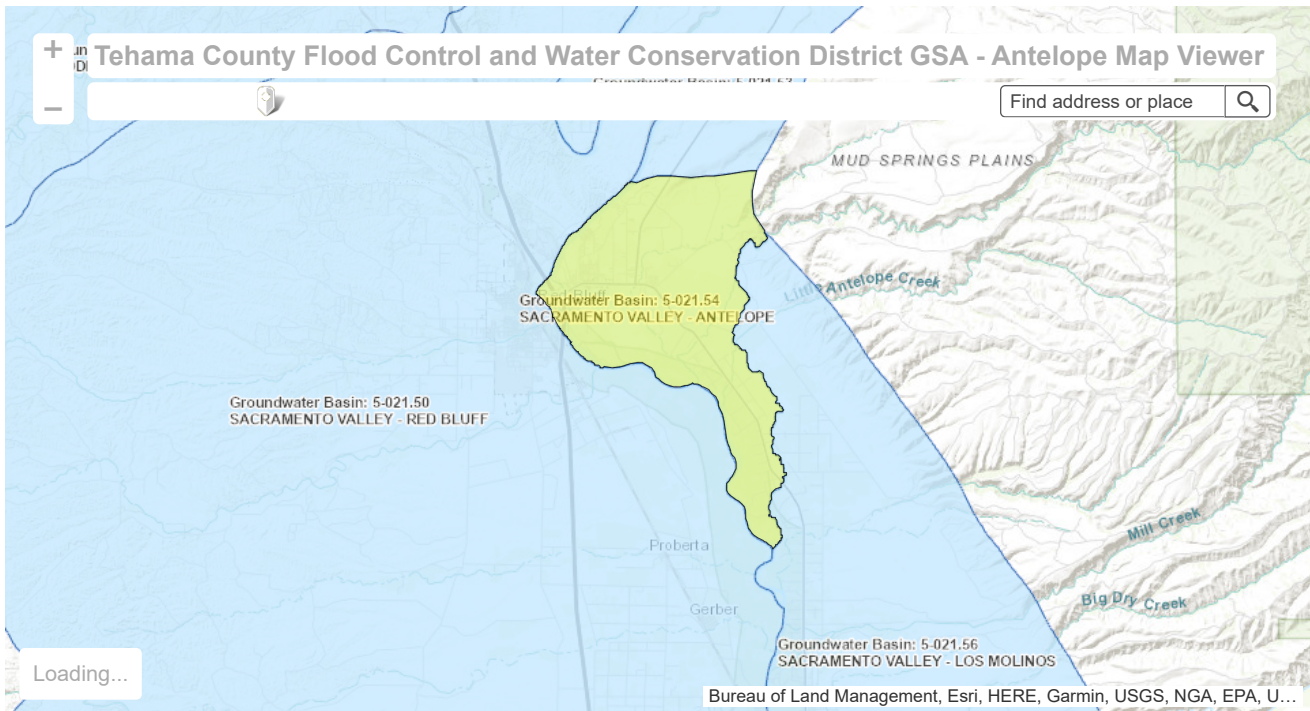
The District is uniquely qualified to become the Agency for all eleven (11) groundwater basins located within the County due to its current jurisdiction which extends throughout the County, its background in groundwater monitoring and water conservation issues, a Board of Directors which is comprised of elected officials representing the entire County, and additional representation from a technical advisory committee to the Board which is comprised of representatives from Agriculture, Domestic/Industrial Water Providers, Natural Resources, and representatives from the cities of Corning, Red Bluff, and Tehama.

During the June 2, 2015 Public Hearing, staff was directed to work with interested water agencies and incorporate them into the governance structure. As a result, an eleven member groundwater commission comprised of city and district representatives and other stakeholders was proposed. To date, letters of support have been received from City of Corning, City of Red Bluff, City of Tehama and El Camino Irrigation District.

The District will be submitting a Notice of Intent at the November 3, 2015 Public Hearing for the following subbasins or the portions of those subbasins located within the County: Rosewood, Bowman, Red Bluff, Corning, Colusa, Vina, Los Molinos, Dye Creek, Antelope, Bend, and South Battle Creek. For questions or additional information on the Sustainable Groundwater Management Act please contact Ryan Teubert, Tehama County Flood Control/Water Resources Manager, 530-385-1462, ext. 3020 or refer to <http://www.water.ca.gov/cagroundwater/>.

# Tehama County Flood Control and Water Conservation District GSA - Antelope

(5-021.54 ANTELOPE)



## Point of Contact Information

Justin Jenson, Deputy Director of Public Works  
Tehama County Flood Control and Water Conservation District GSA - Antelope  
9380 San Benito Avenue | Gerber, CA 96035-9701  
(530) 385-1462 | [jjenson@tcpw.ca.gov](mailto:jjenson@tcpw.ca.gov)  
[www.tehamacountywater.org](http://www.tehamacountywater.org)

## A GSA Eligibility Determination

1. Provide a description of your local agency's water supply, water management, or land use responsibilities within the groundwater basin / basins you intend to manage.  
|
2. Are you an "exclusive local agency" listed in [Water Code §10723\(c\)](#)?  
| No

## B Decision to Become a GSA

1. Please enter the date your local agency, or agencies, decided to become or form a GSA.  
| 11/03/2015
2. Upload a copy of the [Government Code §6066](#) notice.  
|
3. Upload a copy of resolution forming the new agency.
4. If desired, please upload or provide additional information related to your local agency's decision to become or form a GSA.  
| [037\\_Tehama\\_County\\_FCWCD\\_GSA\\_2015-11-04.pdf\(1.1MB\)](#) Uploaded on 02/14/2017 at 04:44PM

## C Type of GSA Formation and Contact Information

GSA Name

| Tehama County Flood Control and Water Conservation District GSA - Antelope

1. Select a Point of Contact (POC) for your GSA.

Justin Jenson

2. If you anticipate submitting multiple GSA notices on behalf of your local agency/GSA, please consider adding a "Local ID" for reference purposes to distinctly identify separate areas you intend to manage.

3. Is this a Single-Agency or Multiple-Agency GSA?

SINGLE

---

#### D Map & Service Area Boundaries

1. Select Basin(s)/Subbasin(s) to be managed by the GSA.

5-021.54 ANTELOPE

2. Upload a PDF map that clearly defines: (1) the service area boundaries of each local agency that is part of your GSA; and (2) the boundaries of the basin(s) or portion of the basin(s) your GSA intends to manage.

3. Upload service area boundary GIS shape file.

[Tehama County Flood Control and Water Conservation District.zip \(26.2kB\)](#) Uploaded on 07/30/2019 at 09:39PM

4. Upload GSA area boundary GIS shape file.

[TehamaCountyFCWCD\\_GSA\\_Antelope.zip \(14.2kB\)](#) Uploaded on 07/30/2019 at 09:40PM

5. If desired, please provide information that clarifies your service area boundary and GSA boundary, if those boundaries are different.

---

#### E Required Documents

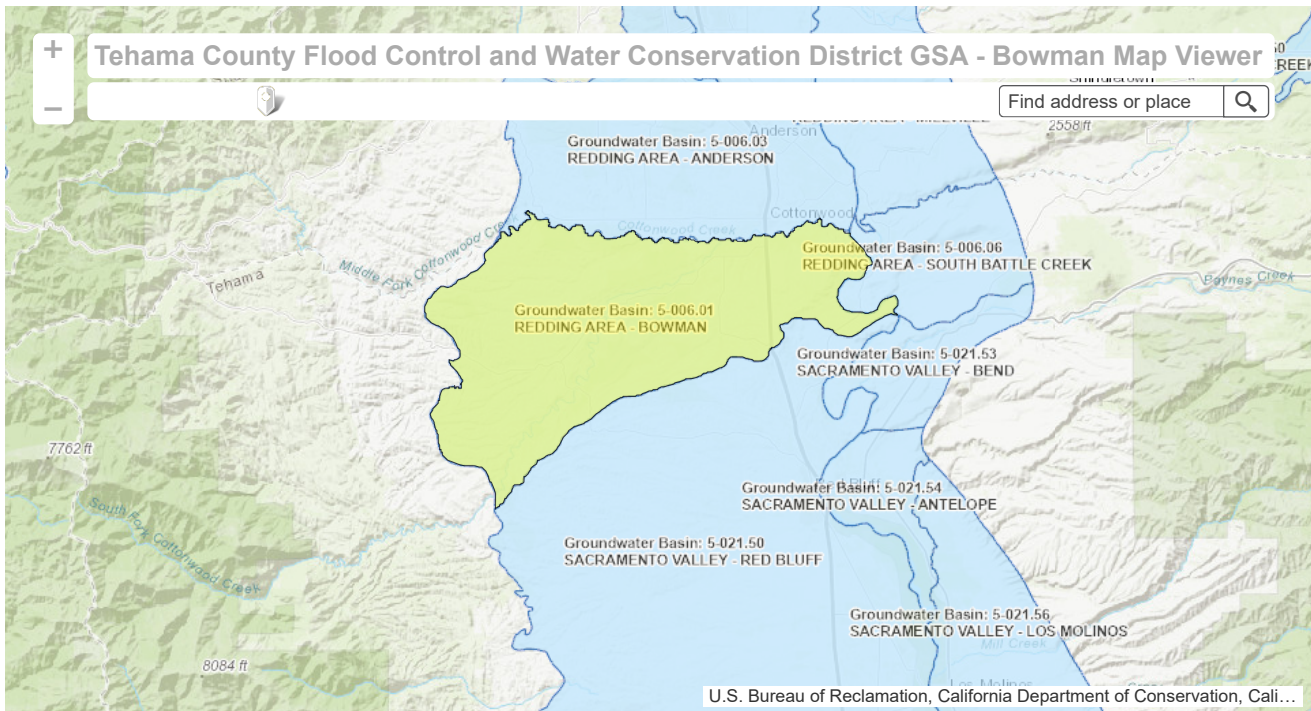
1. Provide a list of interested parties developed pursuant to [Water Code Section 10723.2](#) and an explanation of how their interests will be considered in the development and operation of the GSA and the development and implementation of the GSP.

2. Provide a list of the other agencies managing or proposing to manage groundwater within the basin, or upload a document or map that provides the same information.

3. Provide a description or upload a copy of any new by laws, ordinances, or new authorities adopted by the local agency.

# Tehama County Flood Control and Water Conservation District GSA - Bowman

(5-006.01 BOWMAN)



## Point of Contact Information

Justin Jenson, Deputy Director of Public Works  
Tehama County Flood Control and Water Conservation District GSA - Bowman  
9380 San Benito Avenue | Gerber, CA 96035-9701  
(530) 385-1462 | [jjenson@tcpw.ca.gov](mailto:jjenson@tcpw.ca.gov)  
[www.tehamacountywater.org](http://www.tehamacountywater.org)

## A GSA Eligibility Determination

1. Provide a description of your local agency's water supply, water management, or land use responsibilities within the groundwater basin / basins you intend to manage.  
|
2. Are you an "exclusive local agency" listed in [Water Code §10723\(c\)](#)?  
| No

## B Decision to Become a GSA

1. Please enter the date your local agency, or agencies, decided to become or form a GSA.  
| 11/03/2015
2. Upload a copy of the [Government Code §6066](#) notice.  
|
3. Upload a copy of resolution forming the new agency.
4. If desired, please upload or provide additional information related to your local agency's decision to become or form a GSA.  
| [037\\_Tehama\\_County\\_FCWCD\\_GSA\\_2015-11-04.pdf\(1.1MB\)](#) Uploaded on 02/14/2017 at 04:44PM

## C Type of GSA Formation and Contact Information

GSA Name

Tehama County Flood Control and Water Conservation District GSA - Bowman

1. Select a Point of Contact (POC) for your GSA.

Justin Jenson

2. If you anticipate submitting multiple GSA notices on behalf of your local agency/GSA, please consider adding a "Local ID" for reference purposes to distinctly identify separate areas you intend to manage.

3. Is this a Single-Agency or Multiple-Agency GSA?

SINGLE

---

#### D Map & Service Area Boundaries

1. Select Basin(s)/Subbasin(s) to be managed by the GSA.

5-006.01 BOWMAN

2. Upload a PDF map that clearly defines: (1) the service area boundaries of each local agency that is part of your GSA; and (2) the boundaries of the basin(s) or portion of the basin(s) your GSA intends to manage.

3. Upload service area boundary GIS shape file.

[Tehama County Flood Control and Water Conservation District.zip \(26.2kB\)](#) Uploaded on 07/30/2019 at 09:43PM

4. Upload GSA area boundary GIS shape file.

[TehamaCountyFCWCD\\_GSA\\_Bowman.zip \(24.2kB\)](#) Uploaded on 07/30/2019 at 09:43PM

5. If desired, please provide information that clarifies your service area boundary and GSA boundary, if those boundaries are different.

---

#### E Required Documents

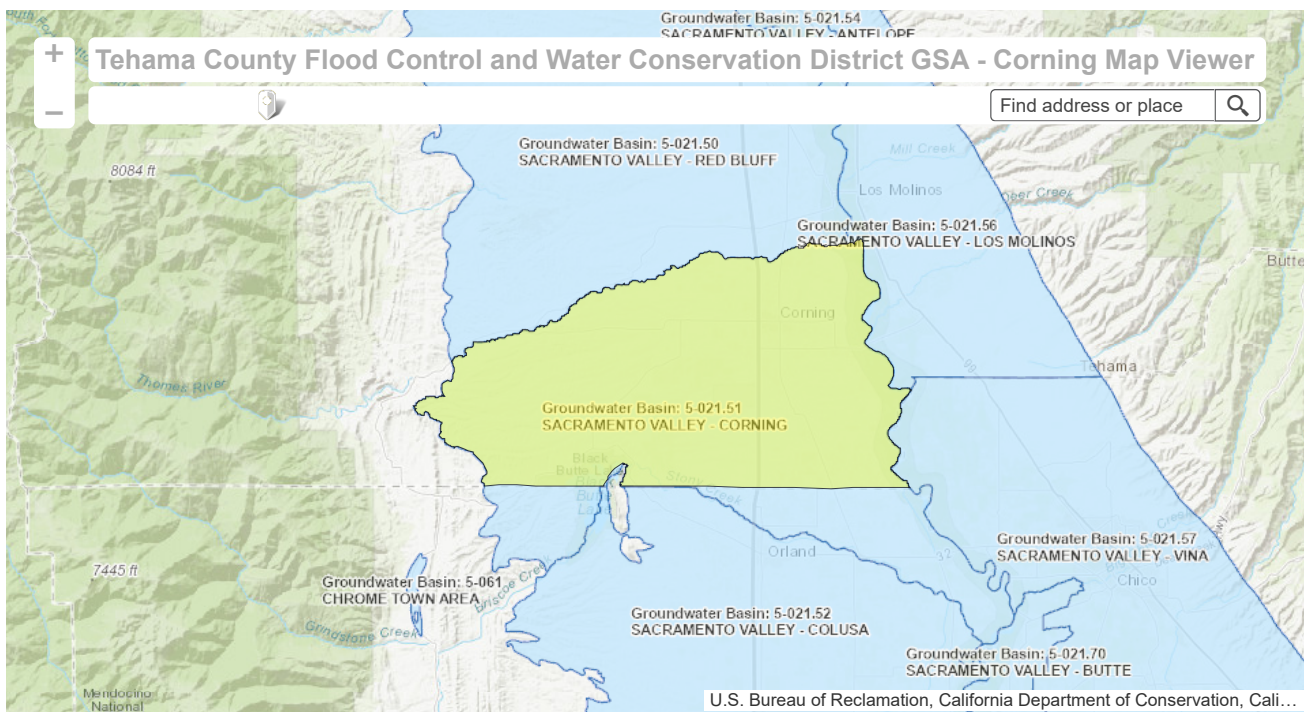
1. Provide a list of interested parties developed pursuant to [Water Code Section 10723.2](#) and an explanation of how their interests will be considered in the development and operation of the GSA and the development and implementation of the GSP.

2. Provide a list of the other agencies managing or proposing to manage groundwater within the basin, or upload a document or map that provides the same information.

3. Provide a description or upload a copy of any new by laws, ordinances, or new authorities adopted by the local agency.

# Tehama County Flood Control and Water Conservation District GSA - Corning

(5-021.51 CORNING)



## Point of Contact Information

Justin Jenson, Deputy Director of Public Works  
Tehama County Flood Control and Water Conservation District GSA - Corning  
9380 San Benito Avenue | Gerber, CA 96035-9701  
(530) 385-1462 | [jjenson@tcpw.ca.gov](mailto:jjenson@tcpw.ca.gov)  
[www.tehamacountywater.org](http://www.tehamacountywater.org)

## A GSA Eligibility Determination

1. Provide a description of your local agency's water supply, water management, or land use responsibilities within the groundwater basin / basins you intend to manage.  
|
2. Are you an "exclusive local agency" listed in [Water Code §10723\(c\)](#)?  
| No

## B Decision to Become a GSA

1. Please enter the date your local agency, or agencies, decided to become or form a GSA.  
| 11/03/2015
2. Upload a copy of the [Government Code §6066](#) notice.  
|
3. Upload a copy of resolution forming the new agency.
4. If desired, please upload or provide additional information related to your local agency's decision to become or form a GSA.  
| [037\\_Tehama\\_County\\_FCWCD\\_GSA\\_2015-11-04.pdf\(1.1MB\)](#) Uploaded on 02/14/2017 at 04:44PM

## C Type of GSA Formation and Contact Information

GSA Name

Tehama County Flood Control and Water Conservation District GSA - Corning

1. Select a Point of Contact (POC) for your GSA.

Justin Jenson

2. If you anticipate submitting multiple GSA notices on behalf of your local agency/GSA, please consider adding a "Local ID" for reference purposes to distinctly identify separate areas you intend to manage.

3. Is this a Single-Agency or Multiple-Agency GSA?

SINGLE

---

D Map & Service Area Boundaries

1. Select Basin(s)/Subbasin(s) to be managed by the GSA.

5-021.51 CORNING

2. Upload a PDF map that clearly defines: (1) the service area boundaries of each local agency that is part of your GSA; and (2) the boundaries of the basin(s) or portion of the basin(s) your GSA intends to manage.

3. Upload service area boundary GIS shape file.

4. Upload GSA area boundary GIS shape file.

[TehamaCountyFCWCD\\_GSA\\_Corning.zip \(21kB\)](#) Uploaded on 07/30/2019 at 09:46PM

5. If desired, please provide information that clarifies your service area boundary and GSA boundary, if those boundaries are different.

---

E Required Documents

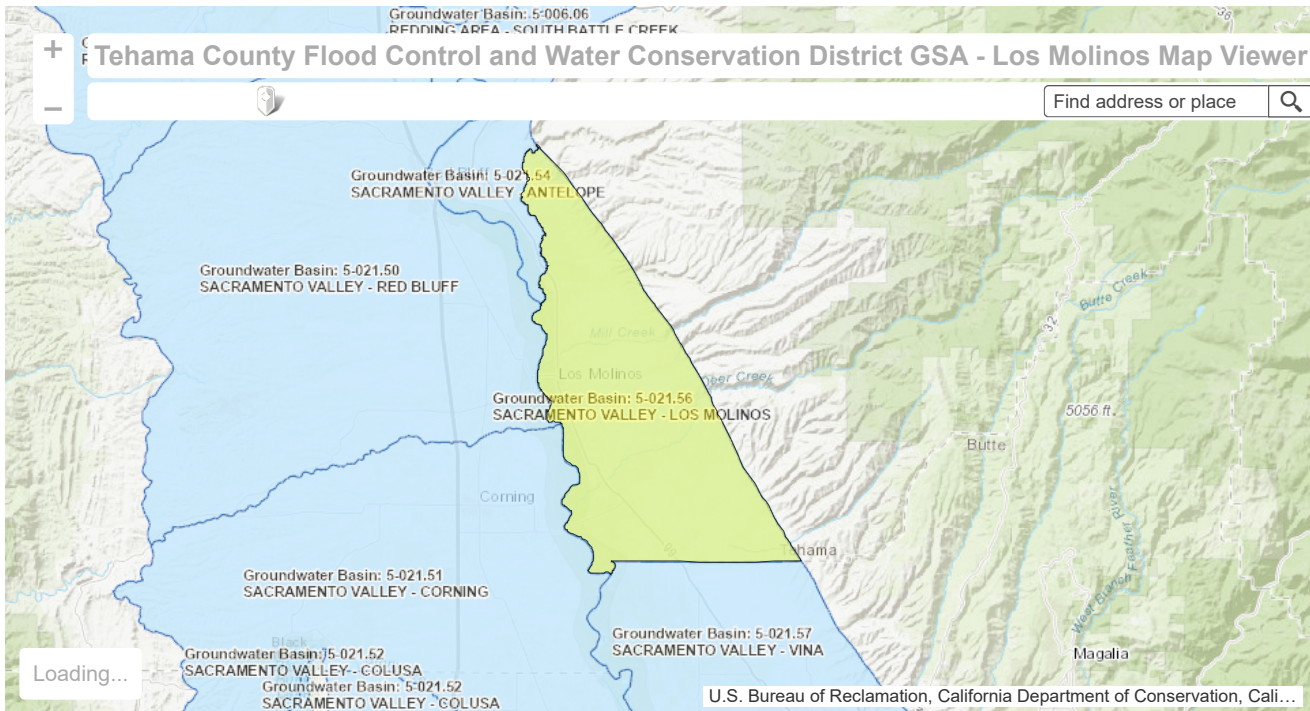
1. Provide a list of interested parties developed pursuant to [Water Code Section 10723.2](#) and an explanation of how their interests will be considered in the development and operation of the GSA and the development and implementation of the GSP.

2. Provide a list of the other agencies managing or proposing to manage groundwater within the basin, or upload a document or map that provides the same information.

3. Provide a description or upload a copy of any new by laws, ordinances, or new authorities adopted by the local agency.

# Tehama County Flood Control and Water Conservation District GSA - Los Molinos

(5-021.56 LOS MOLINOS)



## Point of Contact Information

Justin Jenson, Deputy Director of Public Works  
Tehama County Flood Control and Water Conservation District GSA - Los Molinos  
9380 San Benito Avenue | Gerber, CA 96035-9701  
(530) 385-1462 | [jjenson@tcpw.ca.gov](mailto:jjenson@tcpw.ca.gov)  
[www.tehamacountywater.org](http://www.tehamacountywater.org)

## A GSA Eligibility Determination

1. Provide a description of your local agency's water supply, water management, or land use responsibilities within the groundwater basin / basins you intend to manage.  
|
2. Are you an "exclusive local agency" listed in [Water Code §10723\(c\)](#)?  
| No

## B Decision to Become a GSA

1. Please enter the date your local agency, or agencies, decided to become or form a GSA.  
| 11/03/2015
2. Upload a copy of the [Government Code §6066](#) notice.  
|
3. Upload a copy of resolution forming the new agency.
4. If desired, please upload or provide additional information related to your local agency's decision to become or form a GSA.  
| [037\\_Tehama\\_County\\_FCWCD\\_GSA\\_2015-11-04.pdf\(1.1MB\)](#) Uploaded on 02/14/2017 at 04:44PM

## C Type of GSA Formation and Contact Information

GSA Name  
| Tehama County Flood Control and Water Conservation District GSA - Los Molinos

1. Select a Point of Contact (POC) for your GSA.

Justin Jenson

2. If you anticipate submitting multiple GSA notices on behalf of your local agency/GSA, please consider adding a "Local ID" for reference purposes to distinctly identify separate areas you intend to manage.

3. Is this a Single-Agency or Multiple-Agency GSA?

SINGLE

---

#### D Map & Service Area Boundaries

1. Select Basin(s)/Subbasin(s) to be managed by the GSA.

5-021.56 LOS MOLINOS

2. Upload a PDF map that clearly defines: (1) the service area boundaries of each local agency that is part of your GSA; and (2) the boundaries of the basin(s) or portion of the basin(s) your GSA intends to manage.

3. Upload service area boundary GIS shape file.

[Tehama County Flood Control and Water Conservation District.zip \(26.2kB\)](#) Uploaded on 07/30/2019 at 09:47PM

4. Upload GSA area boundary GIS shape file.

[TehamaCountyFCWCD\\_GSA\\_LosMolinas.zip \(14.1kB\)](#) Uploaded on 07/30/2019 at 09:47PM

5. If desired, please provide information that clarifies your service area boundary and GSA boundary, if those boundaries are different.

---

#### E Required Documents

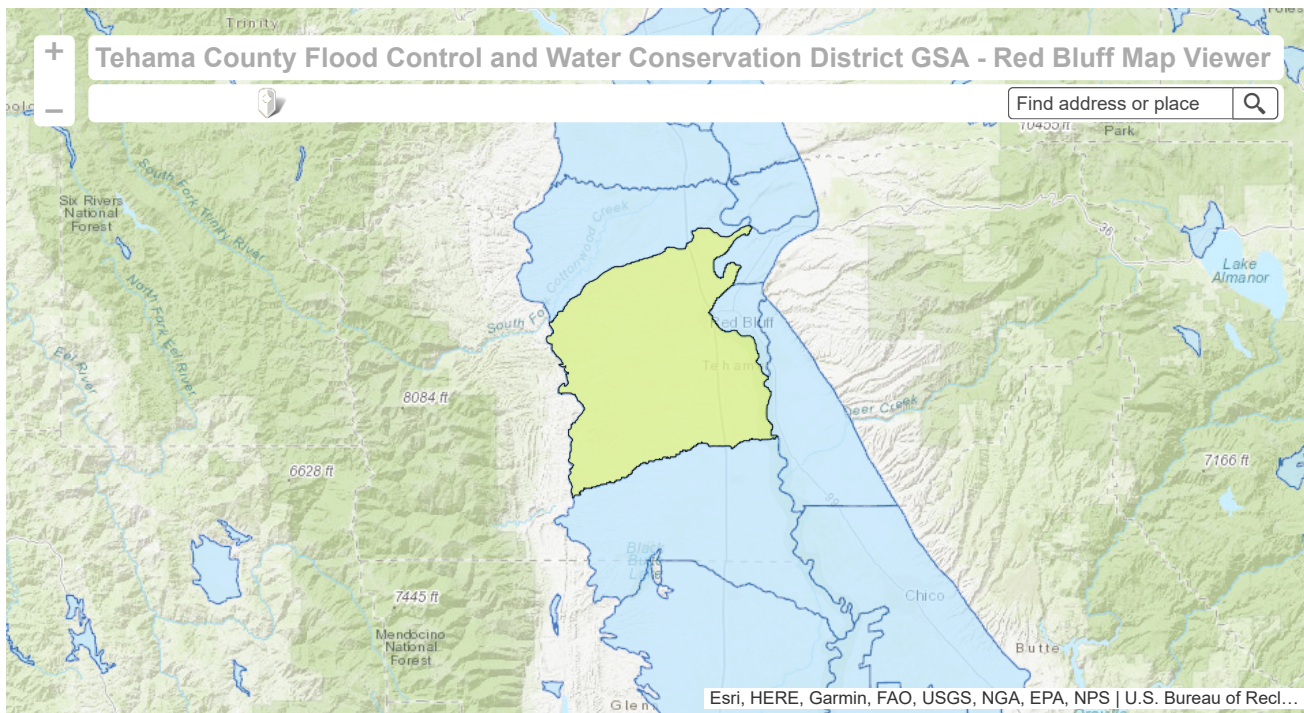
1. Provide a list of interested parties developed pursuant to [Water Code Section 10723.2](#) and an explanation of how their interests will be considered in the development and operation of the GSA and the development and implementation of the GSP.

2. Provide a list of the other agencies managing or proposing to manage groundwater within the basin, or upload a document or map that provides the same information.

3. Provide a description or upload a copy of any new by laws, ordinances, or new authorities adopted by the local agency.

# Tehama County Flood Control and Water Conservation District GSA - Red Bluff

(5-021.50 RED BLUFF)



## Point of Contact Information

Justin Jenson, Deputy Director of Public Works  
Tehama County Flood Control and Water Conservation District GSA - Red Bluff  
9380 San Benito Avenue | Gerber, CA 96035-9701  
(530) 385-1462 | [jjenson@tcpw.ca.gov](mailto:jjenson@tcpw.ca.gov)  
[www.tehamacountywater.org](http://www.tehamacountywater.org)

## A GSA Eligibility Determination

1. Provide a description of your local agency's water supply, water management, or land use responsibilities within the groundwater basin / basins you intend to manage.  
|
2. Are you an "exclusive local agency" listed in [Water Code §10723\(c\)](#)?  
| No

## B Decision to Become a GSA

1. Please enter the date your local agency, or agencies, decided to become or form a GSA.  
| 11/03/2015
2. Upload a copy of the [Government Code §6066](#) notice.  
|
3. Upload a copy of resolution forming the new agency.
4. If desired, please upload or provide additional information related to your local agency's decision to become or form a GSA.  
| [037\\_Tehama\\_County\\_FCWCD\\_GSA\\_2015-11-04.pdf\(1.1MB\)](#) Uploaded on 02/14/2017 at 04:44PM

## C Type of GSA Formation and Contact Information

GSA Name  
| Tehama County Flood Control and Water Conservation District GSA - Red Bluff

1. Select a Point of Contact (POC) for your GSA.

Justin Jenson

2. If you anticipate submitting multiple GSA notices on behalf of your local agency/GSA, please consider adding a "Local ID" for reference purposes to distinctly identify separate areas you intend to manage.

3. Is this a Single-Agency or Multiple-Agency GSA?

SINGLE

---

#### D Map & Service Area Boundaries

1. Select Basin(s)/Subbasin(s) to be managed by the GSA.

5-021.50 RED BLUFF

2. Upload a PDF map that clearly defines: (1) the service area boundaries of each local agency that is part of your GSA; and (2) the boundaries of the basin(s) or portion of the basin(s) your GSA intends to manage.

3. Upload service area boundary GIS shape file.

[Tehama County Flood Control and Water Conservation District.zip \(26.2kB\)](#) Uploaded on 07/30/2019 at 09:50PM

4. Upload GSA area boundary GIS shape file.

[TehamaCountyFCWCD\\_GSA\\_RedBluff.zip \(33.9kB\)](#) Uploaded on 07/30/2019 at 09:50PM

5. If desired, please provide information that clarifies your service area boundary and GSA boundary, if those boundaries are different.

---

#### E Required Documents

1. Provide a list of interested parties developed pursuant to [Water Code Section 10723.2](#) and an explanation of how their interests will be considered in the development and operation of the GSA and the development and implementation of the GSP.

2. Provide a list of the other agencies managing or proposing to manage groundwater within the basin, or upload a document or map that provides the same information.

3. Provide a description or upload a copy of any new by laws, ordinances, or new authorities adopted by the local agency.