

Education Program

2025: Response

This Education Program is intended to be the roadmap we follow to increase diversion each year. This program will be adjusted each year based on the needs the current year presents.

Our past recycling rate percentages are as follows:

Year	Residential	Commercial
2022	26.39%	10.68%
2023	27.58%	9.32%
2024	28.01%	11.20%
2025	28.39%	9.37%

Annual expectation of outreach education expense for 2025 = \$26,045 (\$24,805 x 5% (CPI))

Introduction

2024 presented us with an opportunity to embrace change and gain experience in developing new systems to be more effective.

Our goal for last year was to shift our focus to digital interaction, without erasing our more traditional outreach avenues. The evidence is clear; to effectively communicate with our digital customers, we must be more active with internet outreach. The digital campaign from 2024 has provided a roadmap for how our other outreach efforts can be connected and developed into a consistent message. Without a realistic definition of the “why” behind recycling, it will become even more difficult to get the community to make the required effort. If we join the social media wave, we have an opportunity to normalize the idea of recycling.

Yet, changing the perception of recycling alone is not enough. We need to continue our efforts to “make recycling easy.” We had many conversations with our customers in 2024 and we learned that we can better serve them by changing our process slightly to be more accommodating. To this end, we are refining our current commercial cart system and offering more customer-friendly assistance to support the recycling systems that are already in place.

We have introduced a new mascot, “Rebel the Recycling Raccoon.” This character presents us with the opportunity to engage with the younger demographic while opening dialogues with our customers. It has been our observation that some of the most effective educational conversations take place while a child is occupied with a fun activity or a fluffy mascot. We specifically chose to have Rebel presented through the lens of recycling. We see it as another piece of the story that we are trying to write. It is a highly interactive vision of how we can come together as a community to build a more sustainable future.

Commercial Outreach

❖ Commercial Diversion

➤ Direct Diversion

- This education program has committed to a minimum threshold of 20 “diversions” each year. For this purpose, “diversions” are defined as direct contact with a business that leads to an alteration of its recycling services. An ideal diversion results in a customer permanently decreasing their trash volume in favor of recycling.

♦ *2025: 20 diversions were completed with an average recycling capacity increase of 19%.*

	ACCT#	Service	Action	Date	%
1	2789279	Red Bluf/Unicorp	Start 95r with Education	3/4/2025	0.25
2	2787827	Red Bluf/Unicorp	Set 40cyR schedule to weekly from on-call	3/11/2025	0.25
3	2789206	Corning	Adjusted carts to curbside service	4/18/2025	0.25
4	2789569	Red Bluf/Unicorp	Start 95r with Education	5/12/2025	0.12
5	2771492	Mineral	Added 4cy REC	5/19/2025	0.33
6	2788414	Mineral	Relocated bins for community access	6/2/2025	-
7	2778776	Red Bluf/Unicorp	Added 2cy REC	6/9/2025	0.12
8	2789748	Bend	New Start, upgrade to 2cy	7/1/2025	0.25
9	2789794	Corning	Start 95r with Education	7/2/2025	0.25
10	2789931	Corning	Start 95r with Education	8/4/2025	0.25
11	929262	Mineral	Converted 4cy to REC	8/15/2025	0.25
12	27569724	Red Bluf/Unicorp	Added 1cy REC	9/16/2025	0.5
13	2790193	Red Bluf/Unicorp	Start 95r with Education	10/1/2025	0.12
14	2790194	Corning	Start 95r with Education	10/2/2025	0.12
15	2790224	Corning	Start 95r with Education	10/8/2025	0.12
16	2790293	Red Bluf/Unicorp	Start 95r with Education	10/28/2025	0.12
17	2788386	Corning	Added 1cy REC	11/1/2025	0.25
18	2776281	Corning	Educated on 95 placement	11/1/2025	0
19	187040	Red Bluf/Unicorp	Added additional 95r post TA	11/7/2025	0.12
20	2767941	Los Molinos	Addressed accessibility, kept 2cy on site	11/20/2025	0
					19%

➤ SBA Rebrand

- This is a shared goal with the Tehama County Solid Waste Management Agency’s (TCSWMA) Smart Business Alliance (SBA). After discussion with TCSWMA, we propose to “rebrand” the SBA into a collaborative program between TCSWMA and Green Waste of Tehama (GWT). Joining forces allows the message to become clear for the customer, and for diversion goals to be pursued together.

♦ *Green Waste worked with the agency through e-mail correspondence and an in-person meeting to explore the feasibility of rebranding the Smart Business Alliance (SBA) as a collaborative program. This effort was originally proposed as a way to better support the agency through shared outreach and coordination. Through discussion, it was determined that with the addition of a full-time Recycling Analyst at the agency, the responsibility for any future rebrand would be best managed internally by the agency itself rather than by a private hauler.*

Additionally, it was acknowledged that a rebrand supported or led by Green Waste could create conflicts with the other private hauler operating within Tehama County. To avoid potential equity concerns, it was agreed that any

rebranding effort should be agency-led if and when it moves forward. Green Waste offered continued support in both design and execution, should the agency determine, that assistance would be helpful.

➤ *Technical Assistance*

- As requested by the customer, an additional component of the new program would be Technical Assistance (TA). This process allows the recycling employee to devote more time to maximizing current recycling systems. Components of the TA may include the following:

- ◆ Complete Bin waste audit
- ◆ In-person meeting with site manager or “champion”
- ◆ Site walkthrough and assessment
- ◆ Recommended action and offered support (recycling containers, signage, etc.)
- ◆ Follow-up waste audit
- ◆ Social media support for participating businesses

◆ **2025:**

Technical Assistance (TA) was provided in 2025 on a request basis, consistent with the commitment outlined in the education program. In total, five Technical Assistance projects were completed during the year. Of these, one was conducted within the county jurisdiction covered by this document, with additional projects completed within a city jurisdiction. While the majority of requests originated outside the county program boundary, the work collectively informed and strengthened the overall TA model.

Before conducting site visits, a collaborative Technical Assistance framework was developed in coordination with the agency. This formalized process included customer data research, a pre-inspection when feasible, an on-site walkthrough, an optional staff presentation, and follow-up signage and service recommendations. Establishing this structure improved coordination and allowed the Technical Assistance model to be applied consistently.

The completed County Technical Assistance project resulted in the installation of new recycling signage and bins provided by TCSWMA, the delivery of a full staff presentation, and an increase in recycling service capacity. These changes led to an approximate 25% increase in recycling capacity at the site.

The success of this approach demonstrated the value of the Technical Assistance model, which has since been adopted as a foundational component of the 2026 education program.

❖ **Big Generator Relationships**

- Large generators continue to be a challenge. GWT has tried broad and focused engagement strategies, resulting in little change. The consistent takeaway is that success is predicated on good relationships. In 2025, we will revisit the top five generators in the county and identify “champions” within each organization. Once identified, these individuals will be a direct connection to the business and will simplify communication. We feel these “in-house” personnel will help achieve sustainable change where other efforts have been unsuccessful.

- ◆ *In 2025, Green Waste evaluated diversion opportunities among the county’s highest-volume waste generators, including Rancho Tehama, Walmart DC,*

Reynolds, Crain Walnuts, and Sunsweet. These accounts represent a significant portion of the county's tonnage and remain a priority for long-term diversion efforts.

Initial planning explored the idea of "champions" within these organizations as a mechanism for driving change. As this approach was evaluated, it became clear that the expectation of identifying individual champions was idealistic, given the size of these generators. In practice, we found that working directly with supervisors and management was more realistic than identifying a single internal advocate.

While we didn't make as many friends as we had hoped in 2025, but this evaluation directly informed program development. Based on these findings, Green Waste committed to applying the Technical Assistance model to a selected high-volume generator in 2026, combining a proven framework with the scale necessary to achieve meaningful and sustainable diversion.

- Roll-off bins have been identified as an area where more active diversion can occur. Last year taught us that large-volume trash projects can lead to large amounts of diversion. This will require GWT to adjust the dumping process to account for common diversion commodities such as construction and demolition (C&D) materials

- ◆ *In 2025, Green Waste evaluated roll-off bins as a potential area for increased diversion, with a focus on identifying loads containing higher volumes of recyclable or reusable materials. The approach centered on monitoring select roll-off loads and flagging those suitable for disposal at the self-haul pad rather than direct landfill disposal, where materials could be further sorted. Monitoring occurred throughout the year and was largely informal, relying on communication between staff through text messages and photos taken during service activities. This process confirmed that while many roll-off loads did contain recyclable or reusable materials, the presence of divertible material was not consistent enough across specific customers or accounts to justify formal account notes or policy changes.*

As a result, the strategy was refined to focus less on customer-specific identification and more on operational decision-making at the point of service. This evaluation led to the conclusion that empowering and training roll-off drivers to assess the recyclability or reusability of a load at the time of collection would be a more effective and scalable approach. This refined strategy has been incorporated as a planned component of the 2026 education program.

❖ Commercial Direct Contact

- Green Waste will design and e-mail four digital "flyers" to each commercial account. These will be topical to current sustainability efforts and will include "best-practice" tips, aimed at improving the recycling process. The frequency of these publications is intended to be useful without overburdening the customer with information.

- ◆ *2025: Four mailers were e-mailed directly to commercial accounts. Examples are included below.*

❖ Commercial Mailer

- Mailers are sent out twice a year to give more in-depth recycling information. Our contract requires us to “print and mail” these mailers twice a year, so we will continue to do so until we can shift to a digital format. We will continue to collaborate with TCSWMA on the flyer content. These publications will also be delivered digitally.
 - ◆ *2025: Mailers were sent in May and October; copies are included below.*

Residential Education

❖ Waste Audits

➤ In-Cab

- This project is a continuation of a collaboration that was developed in 2024. The audit is conducted from a side-load truck, driven by Green Waste’s recycling coordinator. Carts that contain inappropriate items are marked with a cart tag explaining the concern. After a month, the process is repeated on the same route to compare communication progress. TCSWMA’s analyst then processes the data.
- GWT commits to four in-cab audits and will schedule them quarterly to maintain a consistent presence in the community.
 - ◆ *2025:*

Green Waste committed to conducting four in-cab residential recycling audits in 2025. Historically, this audit model involved the Sustainability Coordinator driving a side-load truck with an agency analyst riding along and using in-cab camera footage to identify contamination and opportunities for improvement. At the end of 2024, due to staffing constraints at the agency, Green Waste was asked to complete the physical audit work independently, with the agency providing data analysis support.

In early 2025, the addition of a full-time Recycling Analyst (Christian) allowed the agency to re-engage directly in the audit process. This change expanded both the scope and effectiveness of the audits and strengthened the collaborative nature of the program.

Two audits were conducted independently by the Sustainability Coordinator from the cab of a satellite truck, targeting harder-to-reach service areas. These audits took place in March-April in northwest Tehama County and August-September in the Los Molinos area. Two additional audits were conducted collaboratively with the agency: June-July at the Rio Vista Trailer Park and October-November in the Chard area of south-central Tehama County.

At the beginning of the year, audits utilized the hot/cold cart hanger developed in 2024. Following the first in-person collaborative audit at Rio Vista, Green Waste and the agency met to reassess the communication approach. As a result, both the outreach process and the printed materials were redesigned to be clearer, more approachable, and more informative. The updated hanger was deployed during the first phase of the Chard audit.

As the year progressed, it became evident that bringing a collection truck through neighborhoods limited the ability to fully observe customer behavior.

For the second phase of the Chard audit, the approach was refined again. Audits were conducted from a passenger vehicle using visual inspection of carts, followed by direct e-mail communication with customers. This adjustment reduced operational burden while increasing direct engagement. While individual audit metrics showed modest changes in recycling behavior, the cumulative outcome of the 2025 audits was significant. The process served as a catalyst for deepened collaboration between Green Waste and the agency and resulted in the development of a new, more effective “Recycling Audit” model. This refined approach has been successfully implemented in 2026 and emphasizes meaningful customer interaction, targeted education opportunities, increased recycling service alignment, and visible accountability to the community that Green Waste and the agency are actively paying attention to residential disposal practices.

➤ **On-Foot**

- In addition to “in-cab” audits we propose to conduct recycling audits on foot. We feel that without the truck we are more approachable to customers and will be more available for constructive conversations. GWT will commit to two on-foot audits in 2025.

◆ **2025:**

On-foot residential recycling audits were conducted in 2025 as single-day efforts intended to supplement the broader audit work completed during the year. These audits took place in February in the Lopeman Drive area and in September along Electric Avenue.

As with the in-cab audits, the primary value of the on-foot audits was not the raw data collected, but the role they played in shaping the overall audit approach. While no additional insights into recycling habits were gained by being on foot alone, the format created meaningful opportunities for direct customer interaction. Questions from residents—often centered on why their carts were being observed—led to productive conversations that allowed recycling education to occur in ways that other outreach methods had not consistently achieved.

Although the data itself was not measurably more informative, the on-foot audits reinforced the importance of visible, customer-facing engagement. This experience confirmed that direct interaction was a more effective path forward and helped guide the development of the revised recycling audit model implemented in 2026.

❖ **Recycle Billing Inserts**

- GWT will design and e-mail short-form digital “flyers” to each residential account that has “opted-in” to digital communication. These customers have either consented to communication on their online accounts or signed up through our “digital newsletter opt-in” in 2024. E-mails will be sent as common issues arise. They will be relevant to current sustainability efforts and will include “best-practice” tips, aimed at improving the recycling process. The frequency of these publications is intended to be useful without overburdening the customer with information.

- ◆ **2025: Three mailers were e-mailed directly to commercial accounts. Examples are included below.**

❖ Digital Campaign Continued

➤ Last year demonstrated a social media approach is our best opportunity to reach the community on a personal level. Research suggests that consistent content is the most effective method for growing a social media presence. Therefore in 2025, we will focus on sustained interaction with our customers through social media. This means consistent activity on the platforms we are developing a presence within. We will commit to two informational “posts” a month (24 for the year), with the understanding that much of the interaction will be in shorter formats, such as comments and messaging.

- We would like to incorporate a “Q&A” component into the platform. This would allow customer questions to be answered in a live format. This provides the community with a more interactive experience and makes recycling more accessible.
 - ◆ *2025: We continued to utilize Instagram and Facebook for our digital media campaign. We uploaded over 24 posts and videos to the platforms to expand the reach of our sustainability messages. The topics are listed below, and examples are included at the end.*

	Topic	Date	IG	FB
1	Field team intro	23-Jan	x	
2	Free grindings at the landfill	18-Feb	x	x
3	Giveaway winner	24-Feb	x	
4	Chili cook-off	11-Apr	x	x
5	Rebel at the Fair	2-May	x	
6	Swap Shop 2025 #1	8-May	x	x
7	PSA: Battery Fire	20-May	x	x
8	Library Presentation	17-Jul	x	
9	Swap Shop 2025 #2	25-Jul	x	x
10	BTS Tip: Reusable H2O bottles	10-Aug	x	
11	PSA: Yard Waste fire	11-Aug	x	x
12	Split-body reminder	25-Aug	x	x
13	Recycle Tip: Home recycling bin	27-Aug	x	x
14	Danger Zone	18-Sep	x	x
15	Cart Placement	19-Sep	x	x
16	APP Plug	19-Sep	x	x
17	Break down cardboard	20-Sep	x	x
18	Hot ash!	22-Sep	x	x
19	Hazardous waste disposal	2-Oct		x
20	Outside the recycle bin at the landfill	13-Oct	x	x
21	Textile recycling at the landfill	14-Oct		x
22	Reuse mulch ideas	16-Oct		x
23	Reuse craft ideas	23-Oct		x
24	Used motor oil	27-Oct		x
25	Halloween Fun	31-Oct	x	x

❖ School Presentations

➤ The most significant impact we can have on sustainability efforts comes from educating the next generation. This reality increases the importance of the school presentation collaborations

between GWT and TCSWMA. This 90-minute presentation combines classroom education, interactive games, and hands-on opportunities. These presentations traditionally focus on recycling practices and landfill operation. In 2025, we would like to expand the content of these presentations to offer a selection of topics for educators to choose from.

- ◆ **Eight Presentations were given in 2025:**
 - **March 24 - Evergreen Elementary 4th grade (2 Presentations)**
 - **February 25 - Evergreen Elementary 4th grade (3 Presentations)**
 - **April 29- Antelope Elementary 2nd grade- (3 Presentations)**

❖ Residential Mailer

- Mailers are sent out twice a year to give more in-depth recycling information. Our contract requires us to “print and mail” these mailers twice a year. We will continue to print and mail until we can shift to a digital format, however, these publications will also be delivered digitally to those who have “opted in”. Our collaboration with TCSWMA will continue as we develop each newsletter.

- ◆ **2025: Mailers were sent in May and October; copies are included below.**

Examples

Commercial e-mails:

<p>Save money, recycle.</p> <p>Call Max 530-737-8585</p>   <p>\$25 off per month!</p>	 <p>Join the Smart Business Alliance!</p> <p>The SBA provides free tools & resources to bring your business up to compliance and beyond! For details, contact the Recycling Analyst at (530) 528-1103 or e-mail tehamacountyrecycles@tehama.gov</p>
 <p>Want a more secure bin?</p> <p>We offer lock-bar service for a low monthly fee. Call Green Waste to schedule.</p> <p>530-528-8500</p> 	 <p>Is your business hosting an event?</p> <p>Tehama County businesses have access to free recycling receptacles like the one pictured to collect cans and bottles at your event. Collecting beverage containers also offers a great fundraising opportunity! Contact our Recycling Analyst at (530) 528-1103 to reserve.</p> 

Commercial Mailer:

RECYCLING NEWS

COMMERCIAL Spring 2025

The Smart Business Alliance provides free tools & resources to bring your business up to compliance. For details, contact the Recycling Analyst at (530) 528-1103 or e-mail tehamacountyrecycles@tehama.gov

Is your business compliant with Assembly Bills 341 & 827?

Assembly Bill 827:
Requires a business, non-profit organization, or government agency generating 4+ cubic yards of solid waste per week, to provide customers with accessible recycling receptacles.

Mandatory Commercial Recycling Law (AB 341) requires businesses generating 4+ cubic yards of waste per week or any multi-family dwelling with 5+ units to have a recycling program. *Not in compliance?*

Join the Smart Business Alliance!
The Smart Business Alliance is a community-based program developed by the Tehama County Solid Waste Management Agency that helps local businesses voluntarily engage in waste reduction, reuse, and recycling practices.

How does it work?
TCSWMA's recycling analyst, Christian, will conduct a waste assessment at your business and offer education and training to staff. Indoor recycling containers will also be provided, free of charge!

Contact Christian!
For more information and to schedule a meeting!
(530) 528-1103 • tehamacountyrecycles@tehama.gov

YOUR HOUSEHOLD HAZARDOUS WASTE
Tehama County businesses can dispose of household hazardous waste (HHW) at the Tehama County/Red Bluff Landfill Facility and Corning Facility on the following dates:
• Appointment required and business must have a Hazardous Waste ID Number. Please CALL to schedule.
Tehama County/Red Bluff Landfill HHW Facility:
May-September: 2nd & 4th Saturday
October-April: 2nd Saturday
Corning Disposal HHW Facility:
January - December: 3rd Saturday
Common HHW includes aerosol products, automotive fluids, batteries, electronics, fan, fluorescent lights, fans, household cleaners, paints, stains, solvents, pool and spa chemicals, propane cylinders, pesticides and fertilizers, no explosives, medical waste, ammunition, or radioactive waste. Please keep waste in original containers and do not mix chemicals. The facilities can accept up to 27 gallons or 220 pounds of HHW per site. For more information, please call (530) 528-1103.

METAL

- Aluminum drink cans
- Food/soup Cans
- Aluminum foil, trays
- Sweet biscuit tins
- Metal jar lids
- Empty aerosol cans
- Rinse NO paint or chemical containers
- Labels can be left on

GLASS

- Glass bottles
- Glass jars
- Rinse bottles & jars
- All colors accepted
- Labels can be left on
- NO bottle tops, corks, caps

PAPER

- Newspapers
- Magazines
- Phone books
- White & colored paper
- Envelopes / Junk mail
- Cardboard
- Pizza boxes
- Flatten cardboard
- NO paper with food
- NO laminated paper
- Staples, paper clips & sticky notes are OK!

PLASTIC

- Plastic containers no.#1-#5, #7
- Plastic bags
- Hard plastics
- Plastic film, shrink wrap, packaging
- NO Styrofoam
- Rinse containers
- Remove & Recycle lids
- Labels can be left on

Save money, recycle.

Do you sell propane?
Consider stocking Refillables!
This program has options for in-store refilling or an exchange program

\$25 off per month!

CFL & LEDs
Do not place in your containers. It may delay service.

Did you KNOW?
LEDs are considered hazardous waste and must be disposed of as such. If you have less than 20 bulbs, you can drop them off free of charge at the landfill or a fluorescent collection site.

Tehama County/Red Bluff Landfill
Operated by Green Waste of Tehama
1995 Plymouth Road | Red Bluff, CA (530) 528-1103
cust4019@wasteconnections.com

Tehama County Solid Waste Management Agency
2000 Plymouth Road | Red Bluff, CA 96080
tehamacountyrecycles@tehama.gov
www.tehamacountylandfill.com

Green Waste of Tehama
1805 Airport Boulevard | Red Bluff (530) 528-8500
olp@greenwasteoftehama.com
www.greenwasteoftehama.com

Home Depot
2650 Main St., Red Bluff - (530)528-8579

Green Waste Of Tehama
1805 Airport Blvd., Red Bluff - (530)528-8500

Los Molinos Ace Hardware
7930 HWY 99, Los Molinos - (530)384-1250

South Avenue Ace Hardware
2000 South Ave., Corning - (530)664-2166

Tehama County/Red Bluff Landfill
1995 Plymouth Rd., Red Bluff - (530)528-1103
Accepts up to 20 fluorescent tubes (4' or 8' long)

NOTE:
Businesses & government agencies must make an appointment (530)528-1103 fees apply

CVS Pharmacy, Red Bluff
California Highway Patrol Office, Red Bluff
Tehama County Sheriff's Office, Red Bluff
Rite Aid, Corning
Corning Police Department, Corning

Prescription medication Drop-off locations

VOLUME 29, ISSUE 2 | FALL 2023

RECYCLING NEWS

COMMERCIAL RED BLUFF & TEHAMA COUNTY

A joint effort of the Tehama County Solid Waste Management Agency and Green Waste of Tehama

Holiday Schedule: Closures
Thanksgiving - November 27th, 2023
Christmas Day - December 25th, 2023
New Year's Day - January 1, 2024
Service will be delayed one day for Thursday and Friday pickups.

Join the Smart Business Alliance!
The SBA provides free tools & resources to bring your business up to compliance and beyond! For details, contact the Recycling Analyst at (530) 528-1103 or e-mail tehamacountyrecycles@tehama.gov

Need recycle containers?
Does your business lack recycling receptacles to supplement your existing recycling program?
By joining the SBA, you can receive free recycling containers for inside or outside your business, office, or break room.
See below for examples of what we have provided to local SBA members

Free Recycling Bins at the Landfill Gate
We know things can pile up—especially during busy weeks. To help local businesses manage overflow, two large recycling bins are available for free use just outside the landfill entrance.

Metal-Only Bin – for clean scrap metal only
Mixed Recycling Bin – cardboard, paper, plastic bottles, and aluminum cans

Is your business hosting an event?
Tehama County businesses have access to free recycling receptacles like the one pictured to collect cans and bottles at your event. Collecting beverage containers also offers a great fundraising opportunity! Contact our Recycling Analyst at (530) 528-1103 to reserve.

Tehama County/Red Bluff Landfill
Operated by Green Waste of Tehama
1995 Plymouth Road | Red Bluff, CA 96080
cust4019@wasteconnections.com
(530) 528-1102

Green Waste of Tehama
1805 Airport Boulevard | Red Bluff, CA 96080
olp@greenwasteoftehama.com
(530) 528-8500

Tehama County Solid Waste Management Agency
2000 Plymouth Road | Red Bluff, CA 96080
tehamacountyrecycles@tehama.gov
www.tehamacountylandfill.com
(530) 528-1103

Commercial Recycling Guide

PAPER & CARDBOARD

YES:

- Newspapers, magazines, junk mail, phonebooks, paper bags, cereal boxes, gift and shoe boxes, writing and printing paper
- Shredded paper - Contain in brown paper bag
- Cardboard - Flatten boxes and cut down to fit inside bin
- Pizza Boxes

NO:

- Tissues, paper towels or plates
- Food-soiled paper
- Foil wrapping paper, pet food bags with plastic liners, or waxed paper liners as found in cereal boxes
- Frozen food or juice concentrate containers
- Milk cartons, drink boxes, soy milk and soup boxes

METAL

YES:

- Aluminum and tin cans - rinse clean
- Clean foil
- Aerosol cans - Empty cans only - remove caps and nozzles
- Scrap metal - no larger than 24" in any direction and less than 35 pounds; remove any attached plastic; rubber or wood

NO:

- Foil with heat on it
- Partial or full aerosol cans - must be taken to Household Hazardous Waste collection site
- Automotive parts

GLASS BOTTLES & JARS

YES:

- Glass bottles and jars - rinse and remove lids

NO:

- Light bulbs
- Flower vases
- Ceramics
- Lids
- Mirrors
- Drinking glasses

PLASTIC BOTTLES & TUBS

YES:

- Plastics #1, #5, #7
- Plastic tubs
- Plastic buckets, 5 gallons or less
- Nursery pots
- All plastic bottles - Rinsed
- Bottles used for chemicals - empty bottles only
- Plastic trays or clear sheets
- Plastic bags, wrap or film

NO:

- Styrofoam or other block foam

BATTERIES

NO:

- Do not place in your commercial bins. Batteries are considered hazardous material.
- Lithium batteries, in particular, have a fire risk associated with them

YES:

- Call TCSMA for more information on safe battery disposal: 530 528-1103

Audit refining:

Recycle Right

PUT IN YOUR BLUE CART:

- PAPER
- CARDBOARD
- PLASTIC
- METAL
- GLASS

REMEMBER TO FLATTEN CARDBOARD AND RINSE JARS & BOTTLES

TODAY'S RATING: /10

QUESTIONS? 530-737-8585

WHAT DOES MY RATING MEAN?

We developed the 10-point rating scale as a way for Tehama County residents to easily see their recycling levels and compare with their neighbors.

YOUR PROGRESS

YOUR NEIGHBORHOOD

Hey! What is this?

You've just been part of a Waste Audit—a quick check to see how well your trash and recycling are sorted. Don't stress! We are here to help! See below for your score and check the back for a few tips on where things should go! Let's keep our county clean, one cart at a time.

Recycle Cart

Oops! /5

Food Diapers
 Styrofoam Trash
 E-Waste

Trash Cart

Dang! /5

Yard Waste E-waste
 Pizza Box Recycle
 Batteries

Total: /10

Questions? 530-737-8585

METAL

- Aluminum drink cans
- Food/soup Cans
- Aluminum foil, trays
- Sweet biscuit tins
- Metal jar lids
- Empty aerosol cans
- Rinse
- NO paint or chemical containers

GLASS

- Glass bottles
- Glass jars
- Rinse bottles & jars
- All colors accepted
- NO bottle tops, corks, caps

PAPER

- Newspapers
- Magazines
- Phones books
- White & colored paper
- Envelopes / Junk mail
- Cardboard
- Pizza boxes
- Flatten cardboard
- NO paper with food
- NO laminated paper

PLASTIC

- Plastic containers no.#1-#5, #7
- Plastic bags
- Hard plastics
- Plastic film, shrink wrap, packaging
- NO Styrofoam
- Rinse containers
- Remove & Recycle lids

Recycle your e-waste at the Tehama County Landfill for FREE!

Resi e-mails:

Did you know?

We offer a 4th residential cart (recycle or yard waste) at no charge!

Call 530-528-8500 to schedule!

Recycle your batteries!

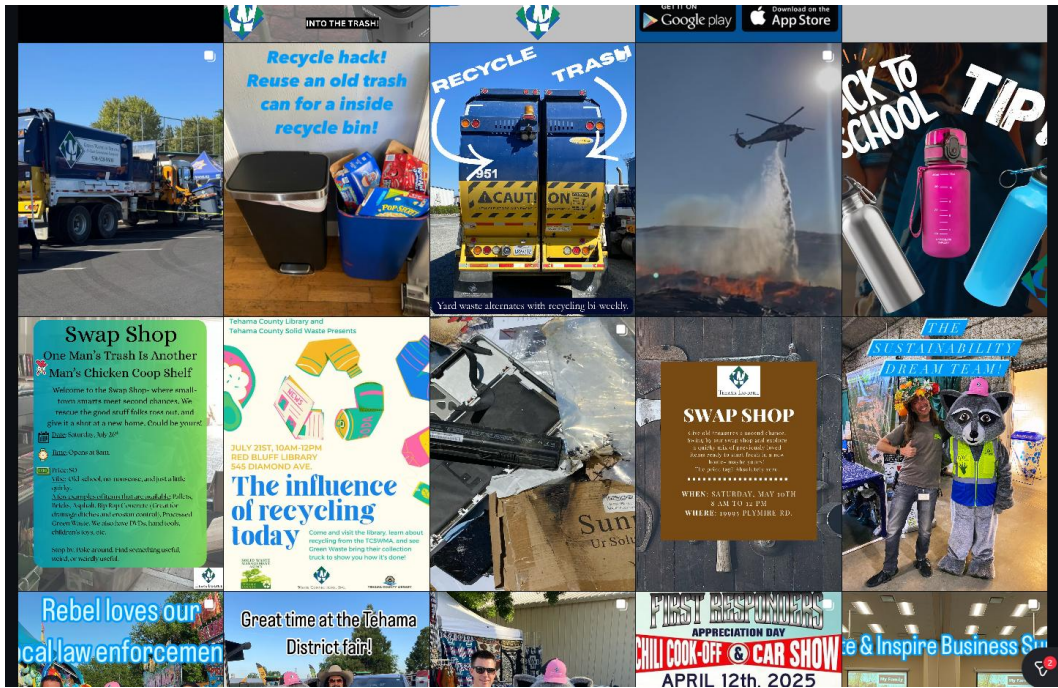
ALKALINE batteries go in an orange battery bag and place them **INSIDE** your blue recycling cart!

Highs are available at the following locations:

- Green Waste Office- 1805 Airport Blvd
- Landfill Agency- 20000 Plymire Rd
- Ace Hardware- 22500 Kinslope Blvd
- Tehama County Library- 545 Diamond
- Golf Country Store- 18367 Bowman Rd Cottonwood



Social media:



Resi mailers:

RECYCLING NEWS Spring 2025

UNINCORPORATED TEHAMA COUNTY AND THE CITY OF TEHAMA

Call your local office for assistance (530) 528-8500

Round Up

YOUR HOUSEHOLD HAZARDOUS WASTE!

Tehama County residents can dispose of household hazardous waste (HHW) at the Tehama County/Red Bluff Landfill Facility and Corning Facility from 8AM - 12PM on the following dates:

Tehama County/Red Bluff Landfill HHW Facility:
May-September: 2nd & 4th Saturday
October-April: 2nd Saturday

Corning Disposal HHW Facility:
January - December: 3rd Saturday

Common HHW includes aerosol products, automotive fluids, batteries, caustics, tar, fluorescent lights, fuels, household cleaners, paints, stains, solvents, pool and spa chemicals, propane cylinders, pesticides and fertilizers. No explosives, medical waste, ammunition, or radioactive waste. Please keep wastes in original containers and do not mix chemicals. **The facilities will accept up to 15 gallons or 50 pounds of HHW per load.** Tehama County residents must bring proof of residency. For more information, please call (530) 528-1103.

Gard: Waste!

- Plants, Trimmings & Grass clippings
- Weeds, leaves & small branches
- Place loosely in no more than 3 bags
- No branches or vines wider than 2in or longer than 2ft
- Nothing more than 5' above the rim

DO NOT PUT TRASH IN THE YARD WASTE CAN

CHECK THIS OUT!

We can send text message reminders. Call your local office to update your cell phone number!

METAL

- Aluminum drink cans
- Aluminum foil, trays
- Sweet biscuit tins
- Metal jar lids
- Empty aerosol cans
- Rinse NO paint or chemical containers
- Labels can be left on

GLASS

- Glass bottles
- Glass jars
- Rinse bottles & jars
- All colors accepted
- Labels can be left on
- NO bottle tops, corks, caps

PAPER

- Newspapers
- Magazines
- Phones books
- White & colored paper
- Envelopes / Junk mail
- Cardboard
- Pizza boxes
- Flatten cardboard
- NO paper with food
- NO laminated paper
- Staples, paper clips & sticky notes are OK!

PLASTIC

- Plastic containers no.#1-#5, #7
- Plastic bags
- Hard plastics
- Plastic film, shrink wrap, packaging
- NO Styrofoam
- Rinse containers
- Remove & Recycle lids
- Labels can be left on

Tehama County/Red Bluff Landfill
Operated by Green Waste of Tehama
1995 Plymouth Road | Red Bluff, CA (530) 528-1103
www.tchamawaste.com

Tehama County Solid Waste Management Agency
2000 Plymouth Road | Red Bluff, CA (530) 528-8500
www.tchamawaste.com

Green Waste of Tehama
1805 Airport Boulevard | Red Bluff
(530) 528-8500
www.greenwasteoftehama.com

RECYCLING NEWS Spring 2025

COMMERCIAL

The Smart Business Alliance provides free tools & resources to bring your business up to compliance. For details, contact the Recycling Analyst at (530) 528-1103 or e-mail tehamacountyrecycles@tehama.gov

Round Up

YOUR HOUSEHOLD HAZARDOUS WASTE!

Tehama County businesses can dispose of household hazardous waste (HHW) at the Tehama County/Red Bluff Landfill Facility and Corning Facility on the following dates:

Appointment required and business must have a Hazardous Waste ID Number. Please CALL to schedule.

Tehama County/Red Bluff Landfill HHW Facility:
May-September: 2nd & 4th Saturday
October-April: 2nd Saturday

Corning Disposal HHW Facility:
January - December: 3rd Saturday

Common HHW includes aerosol products, automotive fluids, batteries, caustics, tar, fluorescent lights, fuels, household cleaners, paints, stains, solvents, pool and spa chemicals, propane cylinders, pesticides and fertilizers. No explosives, medical waste, ammunition, or radioactive waste. Please keep wastes in original containers and do not mix chemicals. **The facilities can accept up to 27 gallons or 200 pounds of HHW per 15ft.** For more information, please call (530) 528-1103.

METAL

- Aluminum drink cans
- Food/soup Cans
- Aluminum foil, trays
- Sweet biscuit tins
- Metal jar lids
- Empty aerosol cans
- Rinse NO paint or chemical containers
- Labels can be left on

GLASS

- Glass bottles
- Glass jars
- Rinse bottles & jars
- All colors accepted
- Labels can be left on
- NO bottle tops, corks, caps

PAPER

- Newspapers
- Magazines
- Phones books
- White & colored paper
- Envelopes / Junk mail
- Cardboard
- Pizza boxes
- Flatten cardboard
- NO paper with food
- NO laminated paper
- Staples, paper clips & sticky notes are OK!

PLASTIC

- Plastic containers no.#1-#5, #7
- Plastic bags
- Hard plastics
- Plastic film, shrink wrap, packaging
- NO Styrofoam
- Rinse containers
- Remove & Recycle lids
- Labels can be left on

Tehama County/Red Bluff Landfill
Operated by Green Waste of Tehama
1995 Plymouth Road | Red Bluff, CA (530) 528-1103
www.tchamawaste.com

Tehama County Solid Waste Management Agency
2000 Plymouth Road | Red Bluff, CA (530) 528-8500
www.tchamawaste.com

Green Waste of Tehama
1805 Airport Boulevard | Red Bluff
(530) 528-8500
www.greenwasteoftehama.com

VOLUME 29 | ISSUE 21 | FALL 2025

RECYCLING NEWS

UNINCORPORATED TEHAMA COUNTY AND THE CITY OF TEHAMA

A joint effort of the Tehama County Solid Waste Management Agency and Green Waste of Tehama

ALKALINE BATTERIES

AAA, AA, C, D, 9V & 6V
RECHARGEABLE BATTERIES

Place used batteries in this bag, seal and place inside your household trash can.

NO LITHIUM!

Need more battery bags?
Call (530) 528-8500 or visit your local office.

Holiday Tree Removal

Curbside Tree Removal
Trees need to be completely free of decorations and cut in to 3' sections, then placed in to your cart during yard waste week.

Community Tree Free Disposal Bins
Trees do not need to be cut down to be placed in the community bins. Bins will be in the following locations during the month of January.

- Red Bluff Community Center (Kimball Rd)
- Lake California Main Office

Holiday Schedule: Closures

Thanksgiving - November 27th, 2025
Christmas Day - December 25th, 2025
New Year's Day - January 1, 2026

Service will be delayed one day for Thursday and Friday pickups.

Running out space in your carts?

+ OR Add a cart!

All residential accounts can add EITHER an extra recycle or yard waste cart for FREE. Call today to schedule your delivery.

Free Recycling Bins at the Landfill Gate

Two recycling bins are available for free public use just outside the entrance to the landfill.

- Metal only
- Mixed recycling, including paper, cardboard, plastic bottles, and aluminum cans

There are more plastic appliances or services in these bins. These items require special handling and must be dropped off separately. Thank you for helping keep our recycling clean and efficient.

Safe Disposal of Home-Generated Sharps Waste

Order a sharps mail-back package to be shipped directly to your residence for free. Click the button to order now.

For more information on how to order a sharps mail-back package by phone, please call (544) 4-TALK-BACK or (544) 462-5322.

Reminder! Use your 2025 FREE Bulky item pickup

Residents have the opportunity to participate in our biweekly curbside bulky item pickup. Customers must have their account paid up-to-date and items are limited to several household items (see hazardous waste, air, or septic). You must call (530) 528-8500 to schedule the pickup. Service employees may place out the following:

- ONE of the following bulky items: TV, computer, monitor, sofa, lawn seat, mattress, bed spring OR
- UP to ONE cubic yard bag (up to 6-12 gallon, garage size or 15-40 gallon bag)

Tehama County/Red Bluff Landfill
Operated by Green Waste
(530) 528-1102

Green Waste of Tehama
(530) 528-8500

Tehama County Solid Waste Management Agency
(530) 528-1103

Recycling Guide

PAPER & CARDBOARD

YES:

- Newspaper, magazines, junk mail, phonebooks, paper bags, cereal boxes, gift and shoe boxes, writing and printing paper
- Shredded paper - Contain in brown paper bag
- Cardboard - Flatten boxes and cut down to fit inside bin
- Pizza Boxes

NO:

- Tissues, paper towels or plates
- Food soiled paper
- Foil wrapping paper, pet food bags with plastic liners, or waxed paper liners as found in cereal boxes
- Frozen food or juice concentrate containers
- Milk cartons, drink boxes, soy milk and soup boxes

METAL

YES:

- Aluminum and tin cans - rinse clean
- Clean foil
- Aerosol cans - Empty cans only; remove lids and nozzles
- Scrap metal - no larger than 24" in any direction and less than 35 pounds; remove any attached plastic, rubber or wood

NO:

- Foil with food on it
- Partial or full aerosol cans - must be taken to Household Hazardous Waste collection site
- Automotive parts

PLASTIC BOTTLES & TUBS

YES:

- Plastics #1, #5, #7
- Plastic tubs
- Plastic buckets, 5 gallons or less
- Nursery pots
- All plastic bottles - Rinsed
- Bottles used for chemicals - empty bottles only
- Plastic trays or clamshells
- Plastic bags, wrap or film

NO:

- Styrofoam or other block foam

GLASS BOTTLES & JARS

YES:

- Glass bottles and jars - rinse and remove lids

NO:

- Light bulbs
- Window glass
- Flower vases
- Ceramics
- Lids
- Mirrors
- Drinking glasses

BATTERIES

YES:

- Place alkaline batteries in orange sealable bag and place in the recyclable bin
- Bags are available. Call (530) 528-8500

NO:

- Rechargeable batteries
- Lithium batteries