

NOTICE OF EXEMPTION

TO: X Office of Planning and Research
1400 Tenth Street, Room 121
Sacramento, CA 95814

FROM: Tehama County-FCWCD
1509 Schwab Street
Red Bluff, CA 96080

☒ Office of the County Clerk-Recorder
Tehama County
633 Washington Street – Room 11
Red Bluff, CA 96080

Project Title:

Corning Water District water service connection project.

Project Location - Specific:

Corning Subbasin per DWR Bulletin 118. Coordinates: Latitude 39.88616, Longitude -122.210865.

Project Location – City:

Unincorporated

Project Location – County

Tehama County

Description of Nature, Purpose, and Beneficiaries of Project:

The Corning Water District will be installing a water service connection from its existing water system to an existing customer who desires to receive surface water when available. The project will involve the construction of a direct water service connection. This action covers the construction-related activities for installation of this water service connection which is an element of Corning GSP implementation activities to achieve long term groundwater sustainability in the Subbasin.

Name of Public Agency Approving Project:

Tehama County Flood Control & Water Conservation District.

Name of Person or Agency Carrying Out Project:

Tehama County Flood Control & Water Conservation District.

Exempt Status: (Check one)

- ☐ Ministerial (Sec. 21080(b)(1); 15268);
- ☐ Declared Emergency (Sec. 21080(b)(3); 15269(a));
- ☐ Emergency Project (Sec. 21080(b)(4); 15269(b)(c));
- ☒ Categorical Exemption. State type and section number: Class 4, Section 15304, Title 14 CCR and Class 1, Section 15301, Title 14 CCR.
- ☐ Statutory Exemptions. State code number:

Reasons why the project is exempt:

The construction activities consist of nonsignificant impacts to the condition of the land. And the construction activities occurring at existing facilities consist of nonsignificant impacts to those facilities maintaining the same purpose, function and capacity in the Corning Water District system.

Lead Agency Contact Person:

Justin Jenson, Deputy Director

Area Code/Telephone/Extension:

530-690-0700

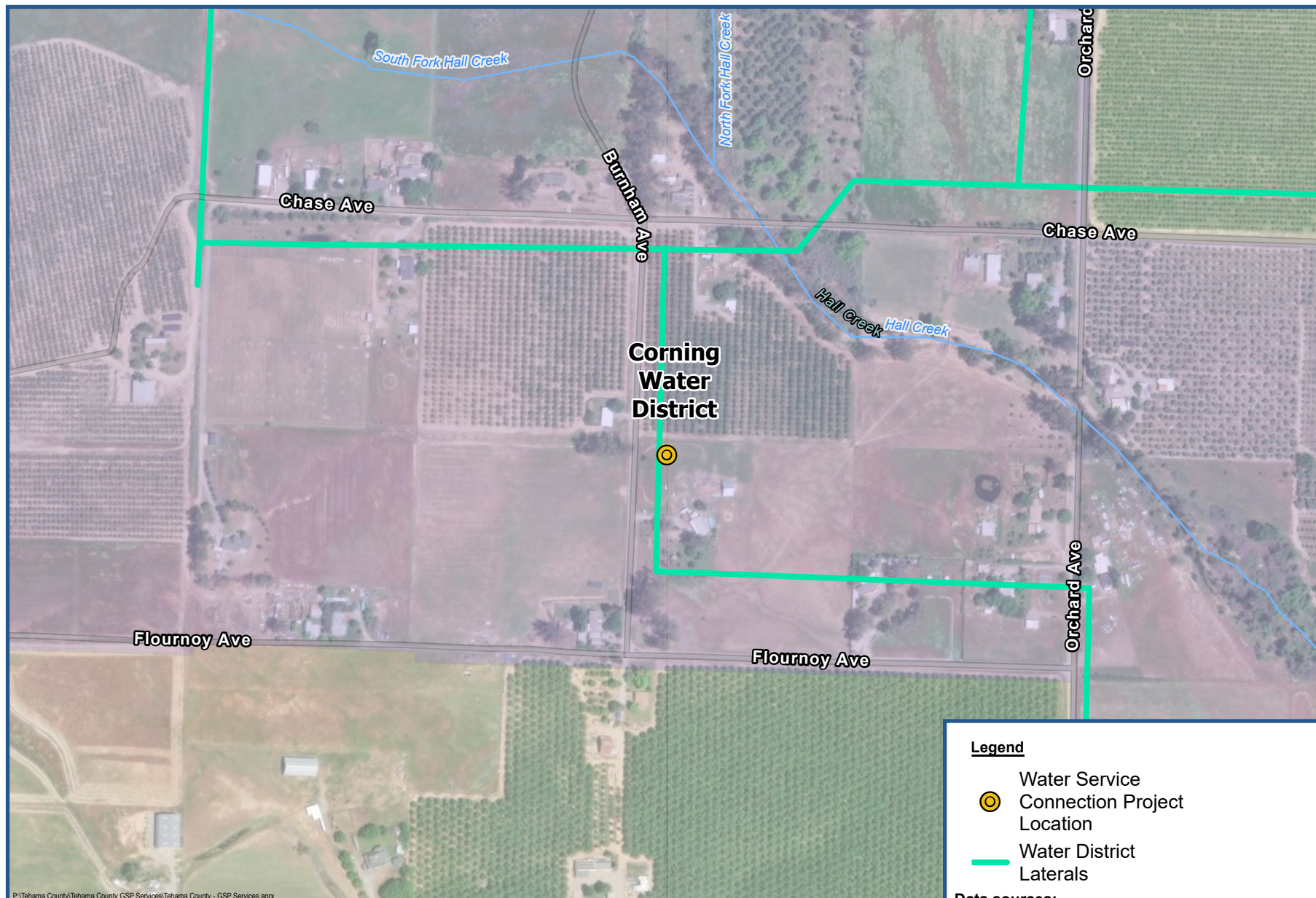
Signature:

Date:

Justin Jenson, Deputy Director

Signed by Lead Agency

Date received for filing at OPR:



P:\Tehama County\Tehama County GSP Services\Tehama County - GSP Services.aprx

Corning Subbasin
Component 4, Category (b), Task 1
Corning WD
Surface Water Service Connection
NOE for Latitude: 39.88616
Longitude: -122.210865

Groundwater Sustainability Planning
 Tehama County, California

Legend

- Water Service
- Connection Project Location
- Water District Laterals

Data sources:

ESRI - Basemap
 DWR - Subbasin Boundaries, Water Districts
 Corning WD - Lateral Locations
 Water and Land Solutions - Project Locations

Coordinate system:

NAD 1983 California (Teale) Albers

