

## NOTICE OF EXEMPTION

---

**TO:** X Office of Planning and Research  
1400 Tenth Street, Room 121  
Sacramento, CA 95814

**FROM:** Tehama County-FCWCD  
1509 Schwab Street  
Red Bluff, CA 96080

☒ Office of the County Clerk-Recorder  
Tehama County  
633 Washington Street – Room 11  
Red Bluff, CA 96080

**Project Title:**

Corning Water District water service connection project.

**Project Location - Specific:**

Corning Subbasin per DWR Bulletin 118. Coordinates: Latitude 39.90365, Longitude -122.18474.

**Project Location – City:**

Unincorporated

**Project Location – County**

Tehama County

**Description of Nature, Purpose, and Beneficiaries of Project:**

The Corning Water District will be installing a water service connection from its existing water system to an existing customer who desires to receive surface water when available. The project will involve the construction of a direct 700 linear foot water service connection. This action covers the construction-related activities for installation of this water service connection which is an element of Corning GSP implementation activities to achieve long term groundwater sustainability in the Subbasin.

**Name of Public Agency Approving Project:**

Tehama County Flood Control & Water Conservation District.

**Name of Person or Agency Carrying Out Project:**

Tehama County Flood Control & Water Conservation District.

**Exempt Status: (Check one)**

- ☐ Ministerial (Sec. 21080(b)(1); 15268);
- ☐ Declared Emergency (Sec. 21080(b)(3); 15269(a));
- ☐ Emergency Project (Sec. 21080(b)(4); 15269(b)(c));
- ☒ Categorical Exemption. State type and section number: Class 4, Section 15304, Title 14 CCR and Class 1, Section 15301, Title 14 CCR.
- ☐ Statutory Exemptions. State code number:

**Reasons why the project is exempt:**

The construction activities consist of nonsignificant impacts to the condition of the land. And the construction activities occurring at existing facilities consist of nonsignificant impacts to those facilities maintaining the same purpose, function and capacity in the Corning Water District system.

**Lead Agency Contact Person:**

Justin Jenson, Deputy Director

**Area Code/Telephone/Extension:**

530-690-0700

**Signature:**

**Date:**

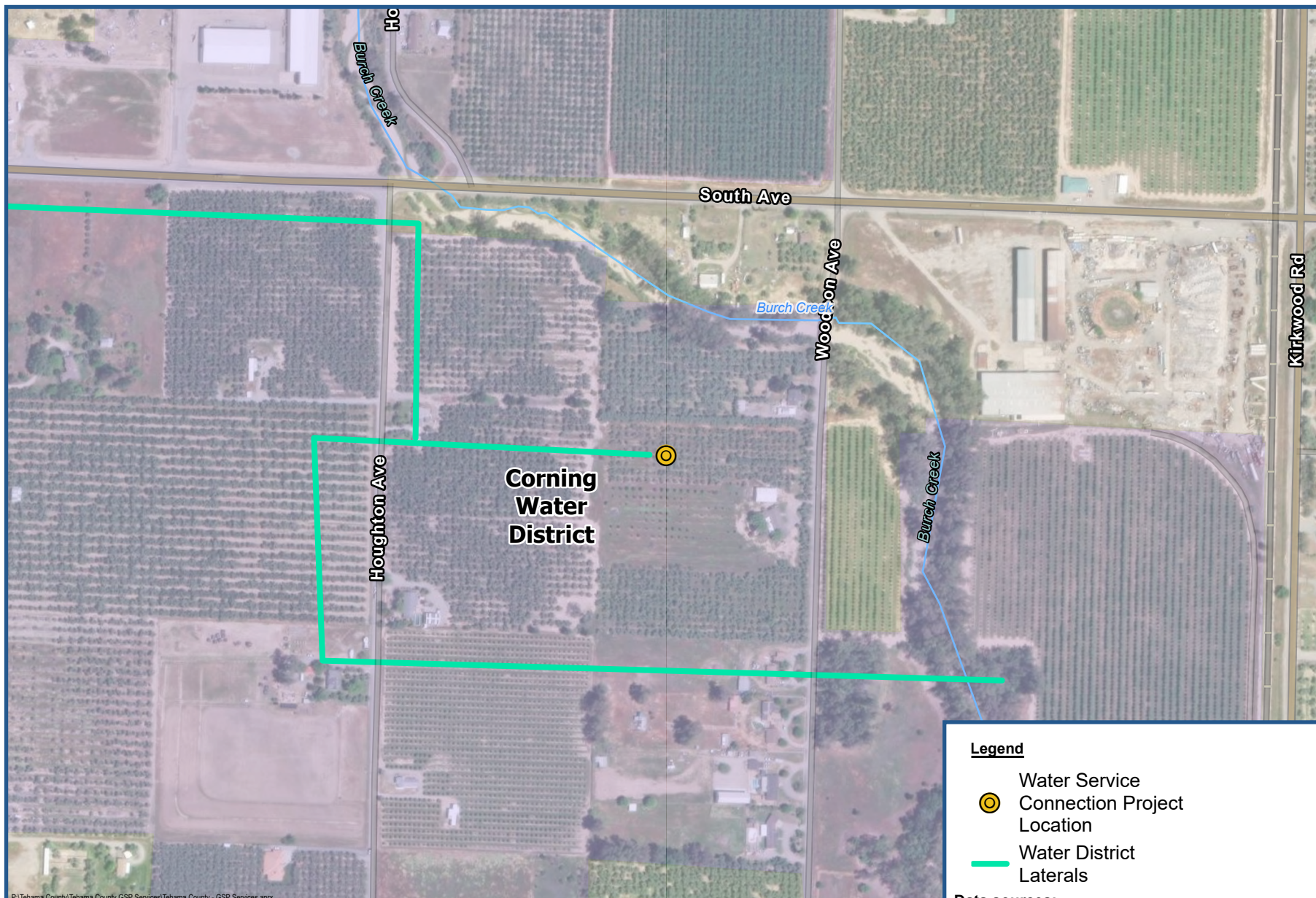
---

Justin Jenson, Deputy Director

Signed by Lead Agency

---

Date received for filing at OPR:





P:\Tehama County\Tehama County GSP Services\Tehama County - GSP Services.aprx

**Corning Subbasin**  
**Component 4, Category (b), Task 1**  
**Corning WD**  
**Surface Water Service Connection**  
**NOE for Latitude: 39.90365**  
**Longitude: -122.18474**

*Groundwater Sustainability Planning  
 Tehama County, California*

#### Legend

-  Water Service Connection Project Location
-  Water District Laterals

#### **Data sources:**

ESRI - Basemap  
 DWR - Subbasin Boundaries, Water Districts  
 Corning WD - Lateral Locations  
 Water and Land Solutions - Project Locations

#### **Coordinate system:**

NAD 1983 California (Teale) Albers

