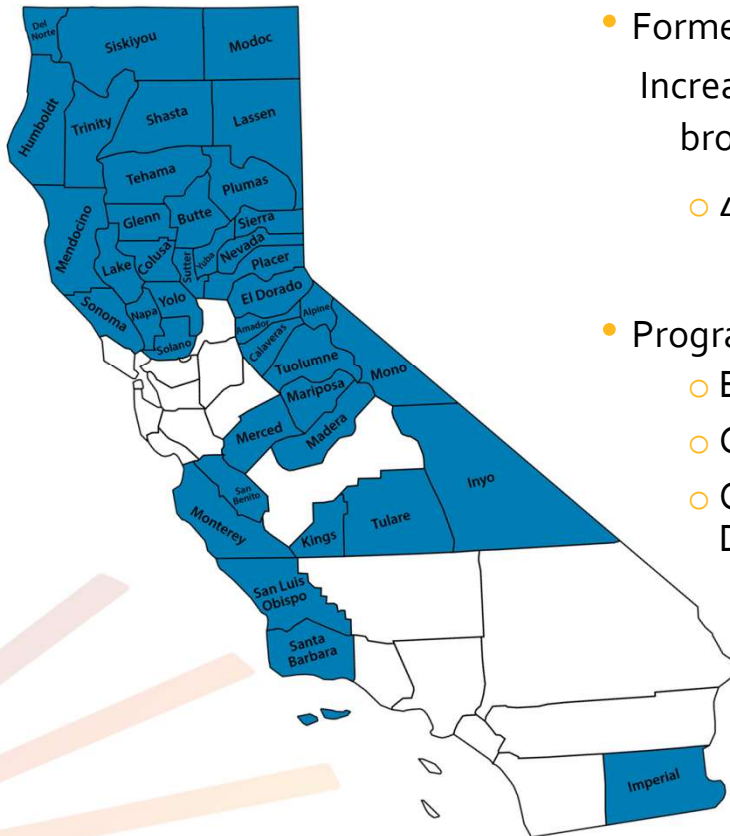




Tehama County
BOARD PRESENTATION

September 2025

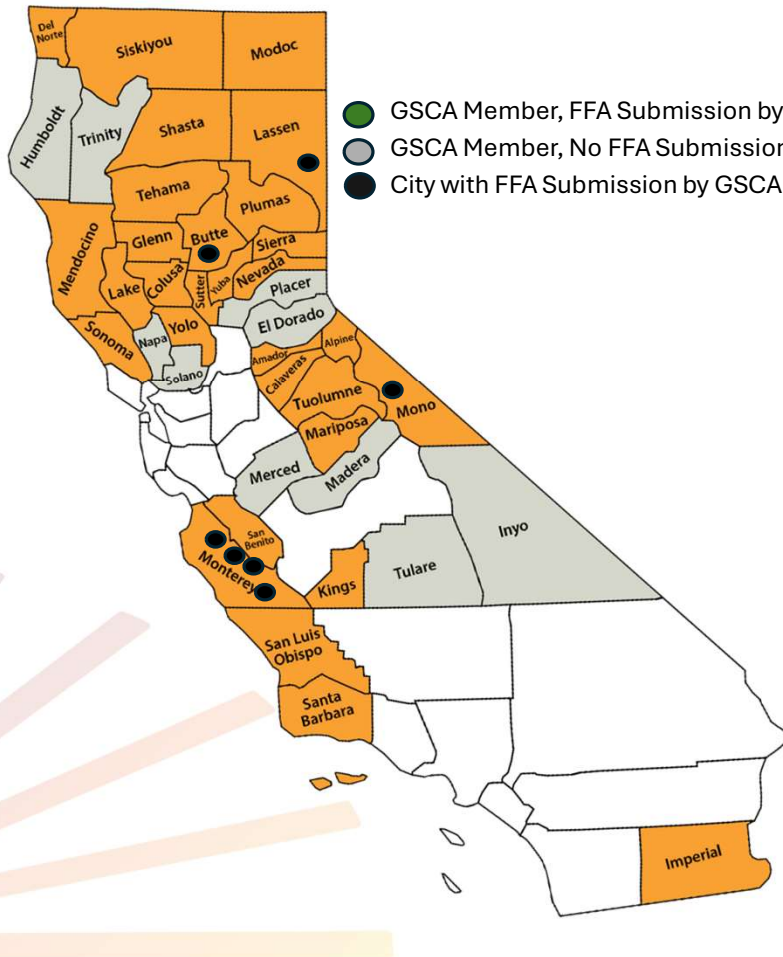
GOLDEN STATE CONNECT AUTHORITY



- Formed Joint Powers Authority (Dec. 2021)
Increase access to reliable, affordable, high-speed broadband for all rural Californians
 - 40 Member Counties
- Program of Work Includes:
 - Broadband Strategic Planning
 - Capacity Building, Information Sharing
 - Open Access Municipal Broadband Deployment

GOLDEN STATE CONNECT AUTHORITY

ROUND 1 – CPUC FEDERAL FUND ACCOUNT LAST MILE AWARDS



GSCA FFA Last Mile Awards Round 1

Imperial County	\$13,834,949
Alpine County	\$ 6,985,978
Mammoth Lakes	\$ 4,158,014
Mono County	\$ 6,074,134
Amador County	\$57,180,300
Tehama County	\$74,798,880
Glenn County	<u>\$22,351,876</u>
Total	\$185,384,131*

*Plus additional \$100 million in bonds

GSCA FFA Last Mile Applications Round 2 – Submitted April 29, 2025

Calaveras County	Inyo County
Monterey County	Trinity County

GOLDEN STATE FIBER – PROJECT PARTNERS

Introductions – Golden State Fiber, UTOPIA Fiber, Tilson Technology



A division of Golden State Connect Authority, a Joint Powers Authority (JPA) established in December 2021, at the strategic direction of the Rural County Representatives of California (RCRC) Board of Directors. Members comprised of 40 rural California counties.

Golden State Fiber represents the open access, last mile, fiber deployment program implemented under Golden State Connect Authority.



Created and governed by a group of Utah cities, the Utah Telecommunication Open Infrastructure Agency (UTOPIA) is a community-owned, open access, fiber network.

Since 2009, UTOPIA Fiber has successfully designed, built, and operated nearly \$600 million worth of fiber projects, with thousands of miles of fiber cable installed.

Currently the largest open access municipal network in the US.



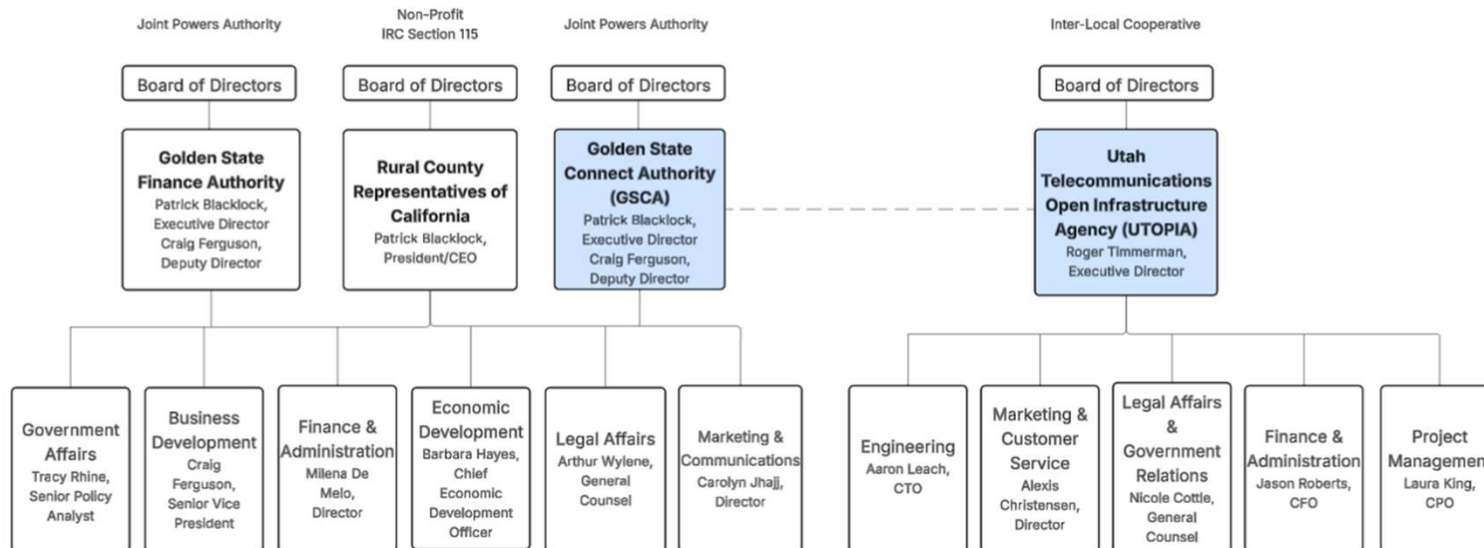
Since 1996, Tilson Technology has provided a full range of telecommunications services to public and private sector clients seeking to improve their information and communications infrastructure.

Tilson has been a partner with Golden State Connect Authority and UTOPIA Fiber on completion of 39 Local Agency Technical Assistance (LATA) grants resulting in low level network designs.



GOLDEN STATE FIBER – DISCUSSION OF ROLES

- ❖ Golden State Connect Authority will finance, construct, own, operate, and maintain the Golden State Fiber network.
- ❖ UTOPIA Fiber is Operational Partner to Golden State Connect Authority for implementation of Golden State Fiber projects across California.



1a: Open Access Introduction

Often compared to airports supporting multiple competing airlines with shared public infrastructure



BENEFITS OF GOLDEN STATE FIBER OPEN ACCESS, LAST MILE, MUNICIPAL FIBER NETWORK

- ❖ All providers run on the same infrastructure – one-time capital investment
- ❖ More competition equals lower prices
- ❖ Creates choice for the customer
- ❖ Installation times are greatly reduced
- ❖ Local providers can expand service areas previously limited by their own capital investment
- ❖ Focus on community benefit – what is best for customer and community
- ❖ Access to fiber available for every address in project area
- ❖ Designed and built to offer Gig Speed options
- ❖ Fiber infrastructure is limitless – future-proof

GOLDEN STATE FIBER PROJECT AREA COMMITMENTS



Golden State Fiber network will be 100% fiber to the address. Opportunity for alternative technologies to tier off around edges.



Golden State Fiber network will serve 100% of the locations in the project area. This includes service to multiple dwelling units.



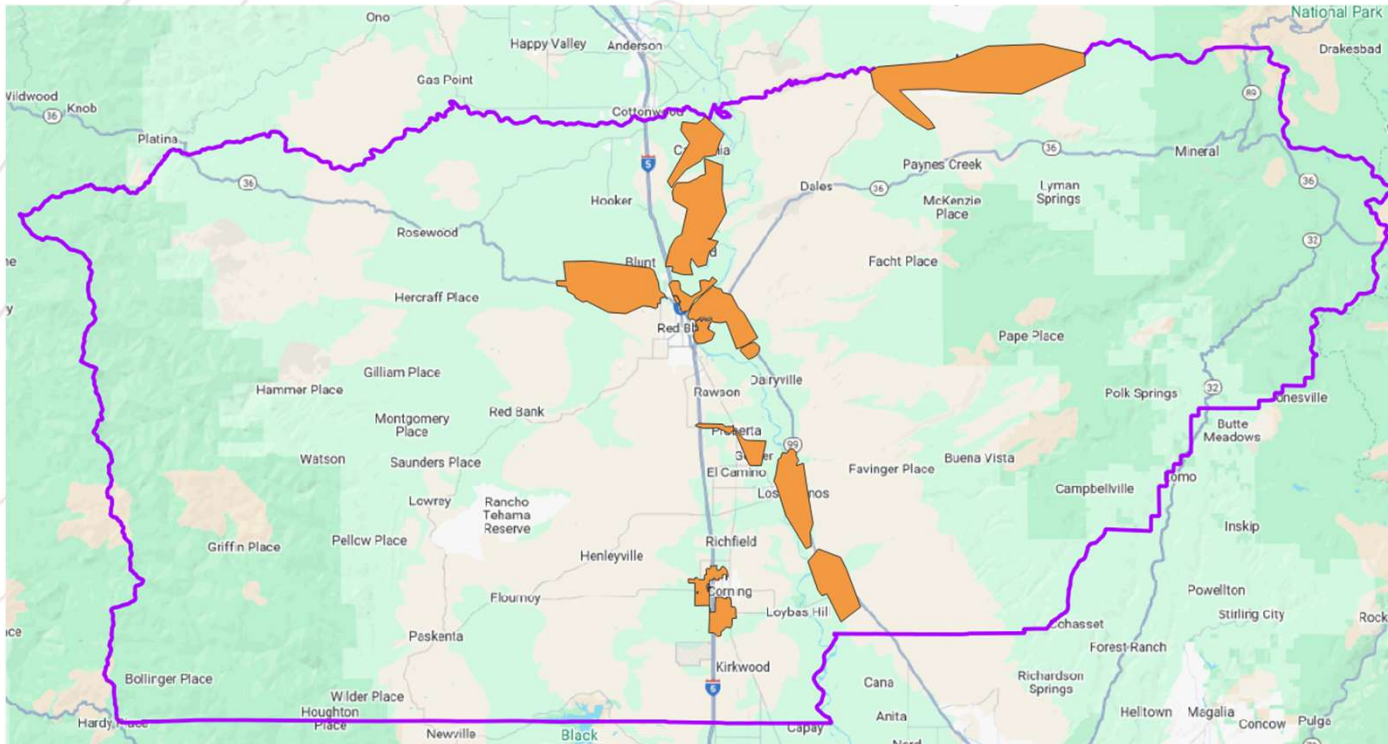
Golden State Fiber network will offer minimum 100/100 Mbps symmetrical service and up to Gig service for residential and 10 Gig service for businesses.



Golden State Fiber network customer service will exceed expectations. This is key to program success.

Tehama County
PROJECT AREA

TEHAMA BROADBAND DESIGN – PROJECT OVERVIEW



Total FFA Award	Phase 1 Design (Completed LATA)	Phase 2 Design (On Deck)
12 project areas	1 ½ project areas	10 ½ project areas

TEHAMA BROADBAND DESIGN – MIDDLE MILE

Delivery Methods

Purchase

Purchase

Joint Build

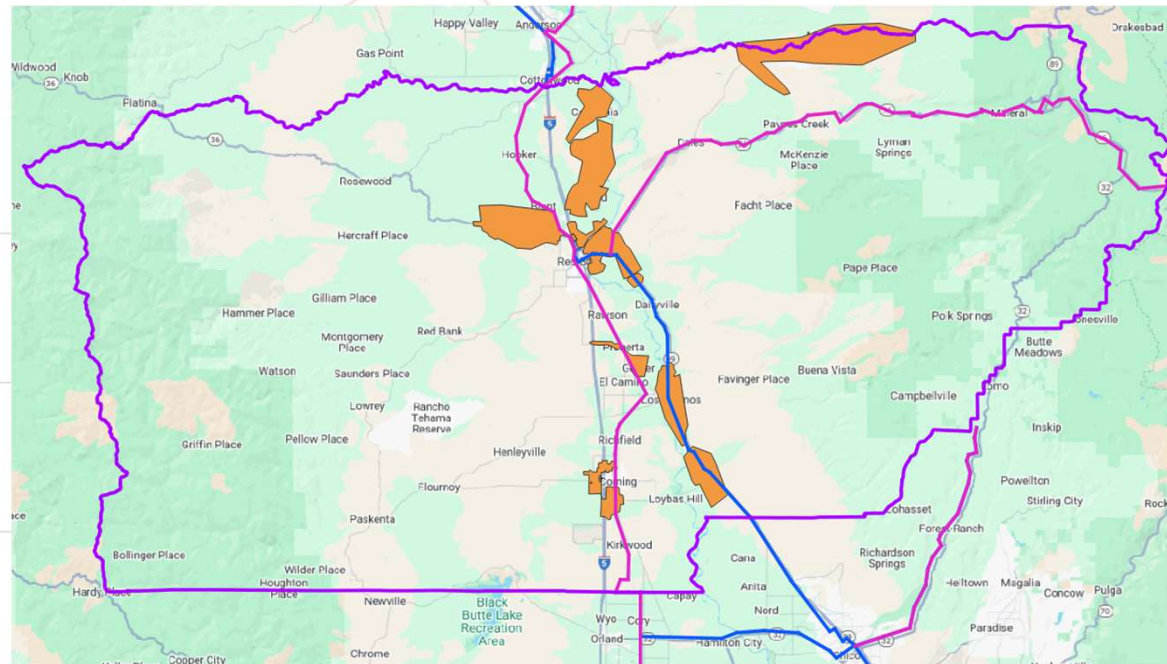
Joint Build

Lease

Lease

Caltrans Construction

Caltrans Construction



Mile Summary

Total Miles	135.2
Purchase Miles	0.0
Joint Build Miles	106.5
Lease Miles	28.7
Caltrans Construction Miles	0.0

4/28/25 data reflected
State Middle-Mile Network Map

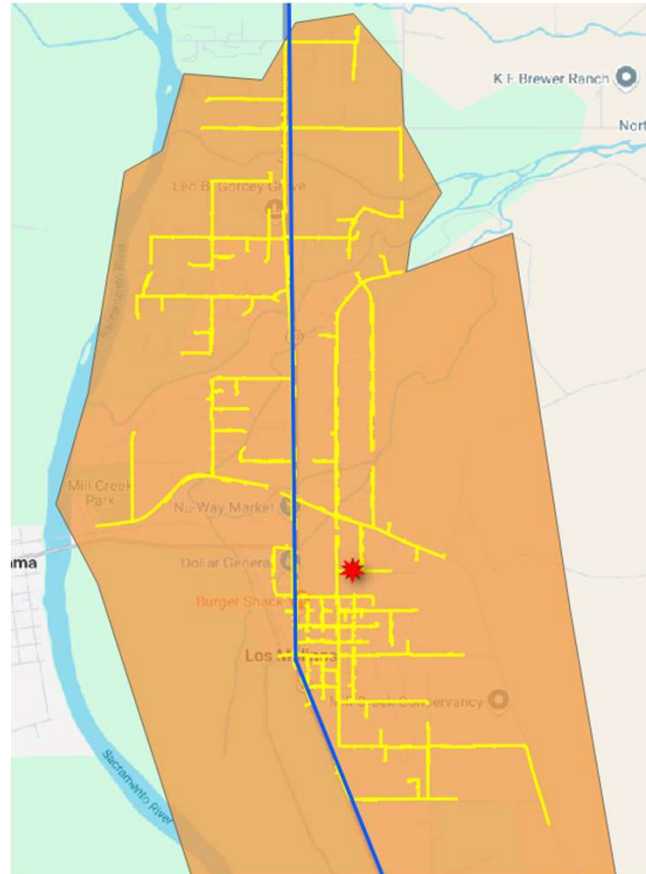
TEHAMA BROADBAND DESIGN – PHASE 1 – PART 1

FUNDED BY LATA GRANTS

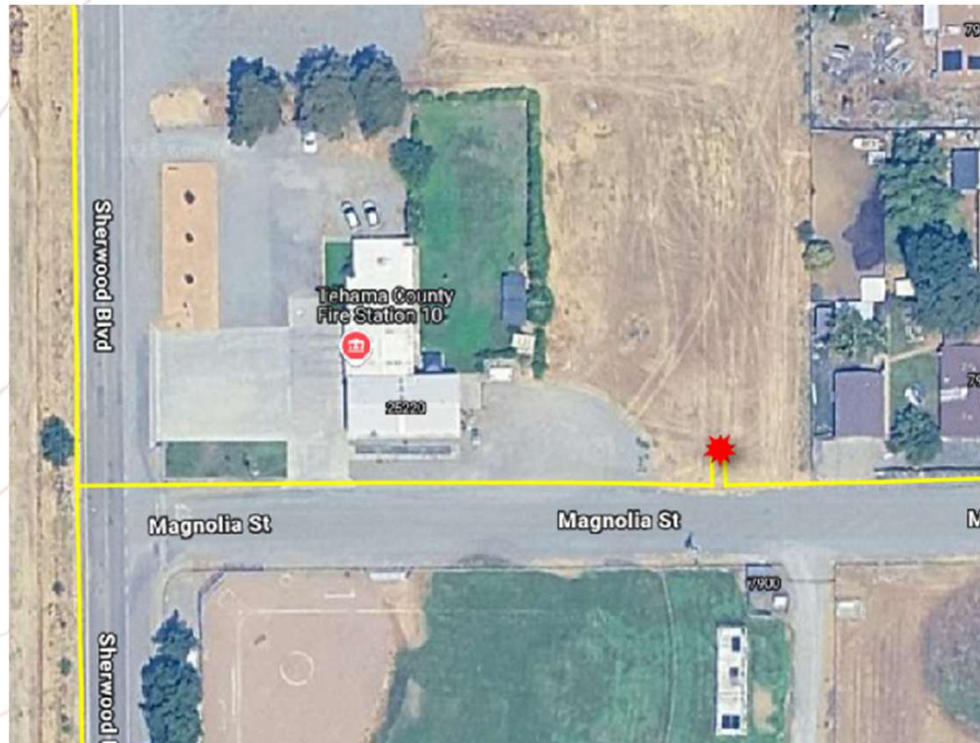
LATA PHASE 1 DESIGN AREA

- Los Molinos
- ~27 miles
- 1,148 BSL
- 1 HUT location

- State Middle Mile
- Construction Path
- LLD HUT locations
- FFA Grant Awarded Areas



TEHAMA BROADBAND DESIGN – PHASE 1 – HUT LOC 3



Project Area	LOC	Location Type	LAT	LONG	Landowner	Power Company	Natural Gas Company	Propane Gas Company	Note
Tehama County	LOC 3	Hut	40.02655	-122.095151	Tehama County	Pacific Gas and Electric	Not Available	TBD	Fire Department

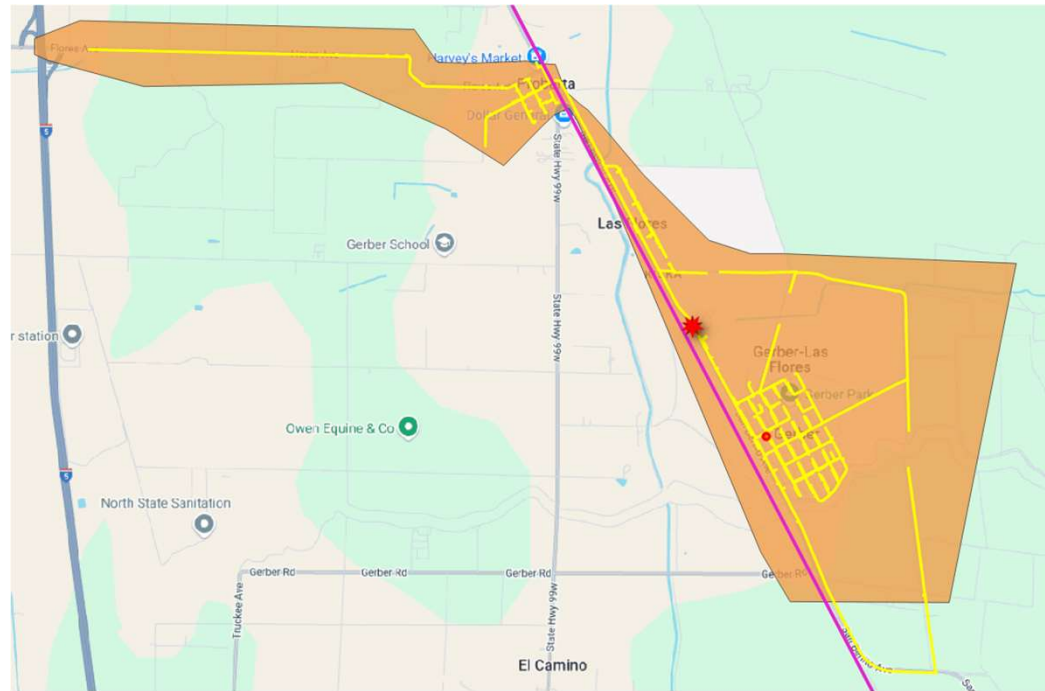
TEHAMA BROADBAND DESIGN – PHASE 1 – PART 2

FUNDED BY LATA GRANTS

LATA PHASE 1 DESIGN

- Gerber/ Proberta
- ~17.5 miles
- 581 BSL
- 1 HUT location

- State Middle Mile
- Construction Path
- LLD HUT locations
- FFA Grant Awarded Areas



TEHAMA BROADBAND DESIGN – PHASE 1 – HUT LOC 4



Project Area	LOC	Location Type	LAT	LONG	Landowner	Power Company	Natural Gas Company	Propane Gas Company
Tehama County	LOC 4	Hut	40.064675	-122.158076	Tehama County	Pacific Gas and Electric	Pacific Gas and Electric	N/R

Hut Construction

Pictures of hut construction process



Bond Issuance Overview

- Golden State Connect Authority (GSCA) is issuing tax-exempt revenue bonds to fund high-speed fiber-optic broadband infrastructure.
- Bonds cover ~30% of project costs; ~70% funded by Federal Funding Account (FFA) grants.
- Bonds are not backed by County taxes or obligations.
- GSCA manages construction, operations, and ISP partnerships.

Bond Issuance Details

- Issuer: GSCA, a joint powers authority of 40 rural California counties.
- Repayment Source: Revenues from broadband services.
- Security: Loan Loss Reserve Program award from CPUC enhances creditworthiness.
- Legal Requirement: Public hearing and finding of significant public benefit.
- County Role: Approval is formal acknowledgment, not financial commitment.

Next Steps and Community Benefits

- Reliable, high-speed internet access for residents and businesses.
- Open-access model promotes competition and affordability.
- No financial burden on the County—GSCA handles all costs and operations.
- **Next Steps:** Approve bond issuance, easements, and MOU.

**We Look Forward To Serving
Your Community**