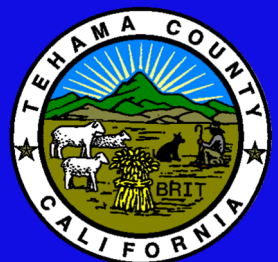


# TEHAMA COUNTY FIRE DEPARTMENT



ANNUAL REPORT • 2024



[WWW.TEHAMACOUNTYFIRE.ORG](http://WWW.TEHAMACOUNTYFIRE.ORG)

# TABLE OF CONTENTS

Chief's Message.....	3
Mission and Vision Statement.....	4
Organizational Chart.....	5
Cooperative Agreement History.....	6
Board of Supervisors.....	7
Battalion Information.....	8
Notable Accomplishments.....	13
Emergency Command Center (ECC).....	14
Call Volume Breakdown.....	15
Volunteer Firefighter Program.....	16
Volunteer Firefighter Hours Breakdown.....	17
Training Bureau.....	18
Volunteer Firefighter Training Requirements.....	19
Public Information (PIO).....	20
Mobile Equipment.....	21
Protection & Planning Bureau.....	22
Pre-Fire Planning.....	23
Prevention Bureau.....	24
Salt Creek Camp.....	25
Ishi Camp.....	26
Awards & Honors.....	27

# MESSAGE FROM THE CHIEF



## Honorable Supervisors and Citizens,

It is my pleasure to present the Tehama County Fire Department's (TCFD) 2024 Annual Report. TCFD is committed and dedicated to the protection of life, property, and the environment on behalf of its citizens.

TCFD currently operates fifteen fire stations, twelve of those currently have active Volunteer Firefighters. Two of those stations are staffed by CAL FIRE through a 'Schedule A' Cooperative Fire Protection Agreement. Under the same agreement, funding for Fire Fighter 1's are provided to staff two CAL FIRE stations during base staffing (Amador). CAL FIRE maintains staffing at six additional fire stations. Together, TCFD and CAL FIRE are dedicated to protecting the residents and visitors in the unincorporated areas of Tehama County and assisting our cooperators through Automatic and Mutual Aid Agreements.

Recruitment and retention of Volunteer Firefighters continues to be a challenge for Fire Departments not only locally, but nationwide. TCFD Volunteer Firefighter numbers fluctuate throughout the year and currently stand at 76. Our Firefighters responded to over 7,734 incidents in 2024.

In late 2024 we took delivery of five new Type 6 fire engines for Fire Station 2 in Lake California, Fire Station 9 in El Camino, Fire Station 12 in Corning, Fire Station 14 in Dibble Creek, and Fire Station 16 in Vina. This commitment to modernize our fleet ensures we have safe and effective vehicles for our Career and Volunteer Firefighters to continue to provide the most efficient, safe, and effective services to our citizens.

2024 was another successful year for grants. Tehama County Fire received approximately \$132,500 dollars to purchase pagers, radios, and Personal Protective Equipment. \$112,500 of those dollars were awarded for the Tehama County Multi-Jurisdictional Hazard Mitigation Plan. This project has required a significant amount of planning, meetings, documentation, and collaboration amongst all agencies and stakeholders within Tehama County.

We have five main goals we will be working towards in 2025 which include:

**Apparatus replacement:** Replacing or retiring vehicles that have performed beyond their life expectancy and no longer meet the demands of an all-risk fire department and/or are not cost effective to maintain. The TCFD Apparatus Replacement Plan is continually evaluated to meet the changing needs of our county.

**Personal Protective Equipment (PPE) replacement:** Replacing structural and wildland firefighting gear that is no longer compliant with NFPA and OSHA regulations to ensure we meet the needs of today, tomorrow, and the future by ensuring our Volunteer and Career Firefighters are in the safest firefighting gear while performing their critical duties of public safety.

**Communications upgrades:** Replacing two-way radios that are no longer usable or programmable for interoperability between partner agencies during emergencies ensuring that we can meet the needs of today and the future along with ensuring compliance with state and federal regulations.

**Recruitment and retention of Volunteer Firefighters:** We have a need to increase our Volunteer Firefighter numbers to ensure we continue to provide efficient and effective services to our citizens. We will continue to recruit and articulate the requirements to become a Volunteer Firefighter and the commitment that it takes to maintain that important position.

**Public education and community involvement:** We will continue to enhance our messaging to the public on fire safety issues through our social media platforms and be an integrated part of community events and activities.

I am excited to share the 2024 accomplishments of the Tehama County Fire Department with you. The commitment of our Volunteer and Career personnel to provide dedicated professional public safety services to our neighbors, friends, family members, and visitors continues to make a significant difference for the public we serve.

I would like to thank all the Firefighters in Tehama County, our dedicated administrative and support staff, the Board of Supervisors, Chief Administrator Hydrick, County Council, the County Department Heads, and our cooperating agencies for their continued support of the Tehama County Fire Department.

*Monty Smith*  
Unit/Fire Chief





## MISSION STATEMENT

The Tehama County Fire Department in cooperation with CAL FIRE is dedicated to the protection of life, property, and natural resources through cost effective planning, prevention and emergency services.

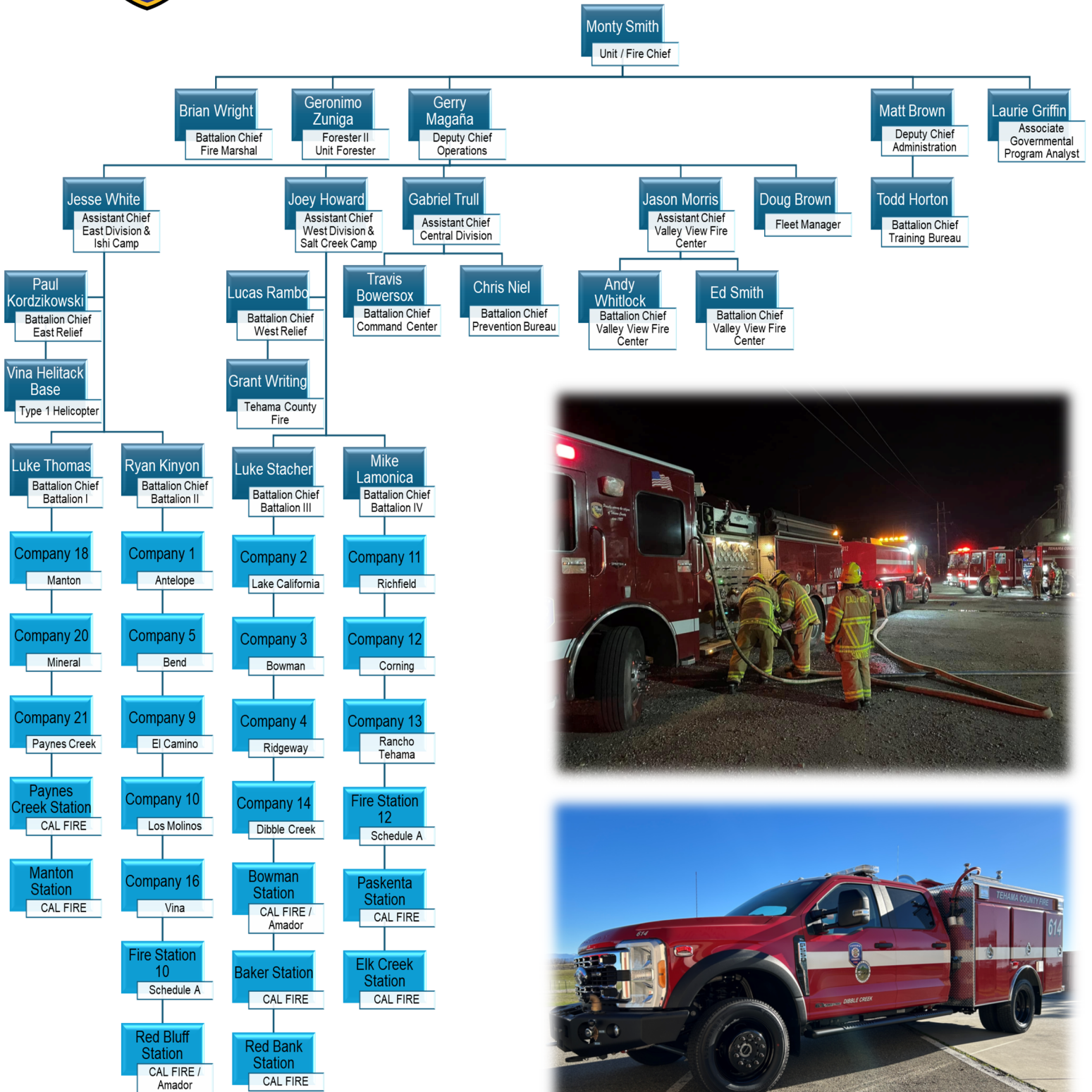
## VISION STATEMENT

The Tehama County Fire Department is committed to exemplary service and will be a leader in fire protection and emergency service through continuous improvement, innovation, and the most efficient and responsible use of resources.





# CAL FIRE / TEHAMA COUNTY FIRE ORGANIZATIONAL CHART





# CAL FIRE / TEHAMA COUNTY FIRE

## COOPERATIVE AGREEMENT HISTORY



The Cooperative Fire Protection Agreement between CAL FIRE and Tehama County Fire is one of the oldest agreements in the State dating back to January 24, 1927. On that date in the matter of the agreement between Tehama County and the State Forester, the Chairman of the Board at the time, George A. Hoag, authorized that the State Forester shall select and pay the salary of a State Forest Ranger between the months of May 1st to October 31st, 1927. Also in the agreement, Tehama County shall pay all the expenses for labor, transportation, and supplies on the account of firefighting which the State Forest Ranger may authorize, but not exceed the amount of money allowed by the Board. In 1927 the total budget was \$2,500.

Between 1927 and 1932, Tehama County continued to bolster its fire protection with cooperative fire protection with the budget increasing to \$4,500 in 1931. During the Board of Supervisors Meeting on May 6, 1929, three names were presented to drive the County Fire Truck in Red Bluff, it was up to the State Forester to select only one person. At this time, the Board also appointed C. A. Burch as the County Fire Truck Driver in Corning to be paid by the State during the summer months. On May 27, 1929 citizens from Los Molinos requested that the Board place the "old fire truck" in Los Molinos, and Los Molinos would cover the expenses. On April 13, 1931, an agreement was signed for year-round fire protection specifying two personnel in the fire trucks in the summer and only one on in the winter. During July of 1931 the Board placed a fire truck in Paskenta which increased the County fleet to four fire trucks.

On December 26, 1933 the County of Tehama and the Division of Forestry signed a 49 year lease for a piece of property for Division of Forestry Tehama Glenn Ranger Unit Headquarters, located on the corner of State Highway 99E and Mulberry Street in Red Bluff. This is the current Headquarters you see today. The Budget increased a few dollars each year, and In 1945 the Cooperate Agreement increased to include the rental of a State owned truck and salary of a State worker to staff a fire truck in Vina during non-fire season. In 1970 a County Engine was obtained and staffed at Vina year round.

The first organized Fire Company in Tehama County, Mineral Hose Company No. 1, was organized on June 2, 1949 for protection in Mineral. Doc Agner organized the Los Molinos Volunteer Fire Company in 1960. Finally, on June 19, 1962 the Board adopted the constitution and laws from the Division of Forestry, and disseminated them to all of the County Volunteer Companies, collectively creating what is now know as the Tehama County Fire Department. The following year, In 1963, Tehama County Fire established a Schedule A station in Proberta. In 1965 Tehama County Fire began staffing an engine in Vina only in the winter, eventually in 1970 the engine was staffed full time. Between 1967 and 1971 Tehama County contracted with CAL FIRE to staff a State fire engine at Baker Station for the winter period in response to the growth in the Bowman area, but the contract was ended due to funding. In the early 1970's Tehama County expanded its contract with CAL FIRE to include administration, supervision, and training of Volunteers Firefighters. In 1979, despite concerns from the citizens, the Board of Supervisors voted to close the Schedule A Stations in Proberta and Vina.

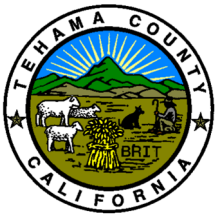
From the 1970's through today, the Tehama County Fire Department and CAL FIRE function essentially as one agency providing complete fire and all-risk emergency services to the citizens of Tehama County.



**BEND VOLUNTEER  
COMPANY 5  
Established 1981**

**Currently closed due to lack  
of Volunteers**





# TEHAMA COUNTY

## BOARD OF SUPERVISORS & CHIEF ADMINISTRATOR



**Robert Burroughs**  
District 1



**Tom Walker**  
District 2



**Pati Nolen**  
District 3



**Matt Hansen**  
District 4

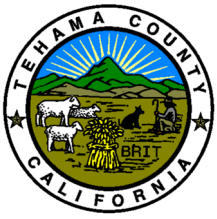


**Greg Jones**  
District 5



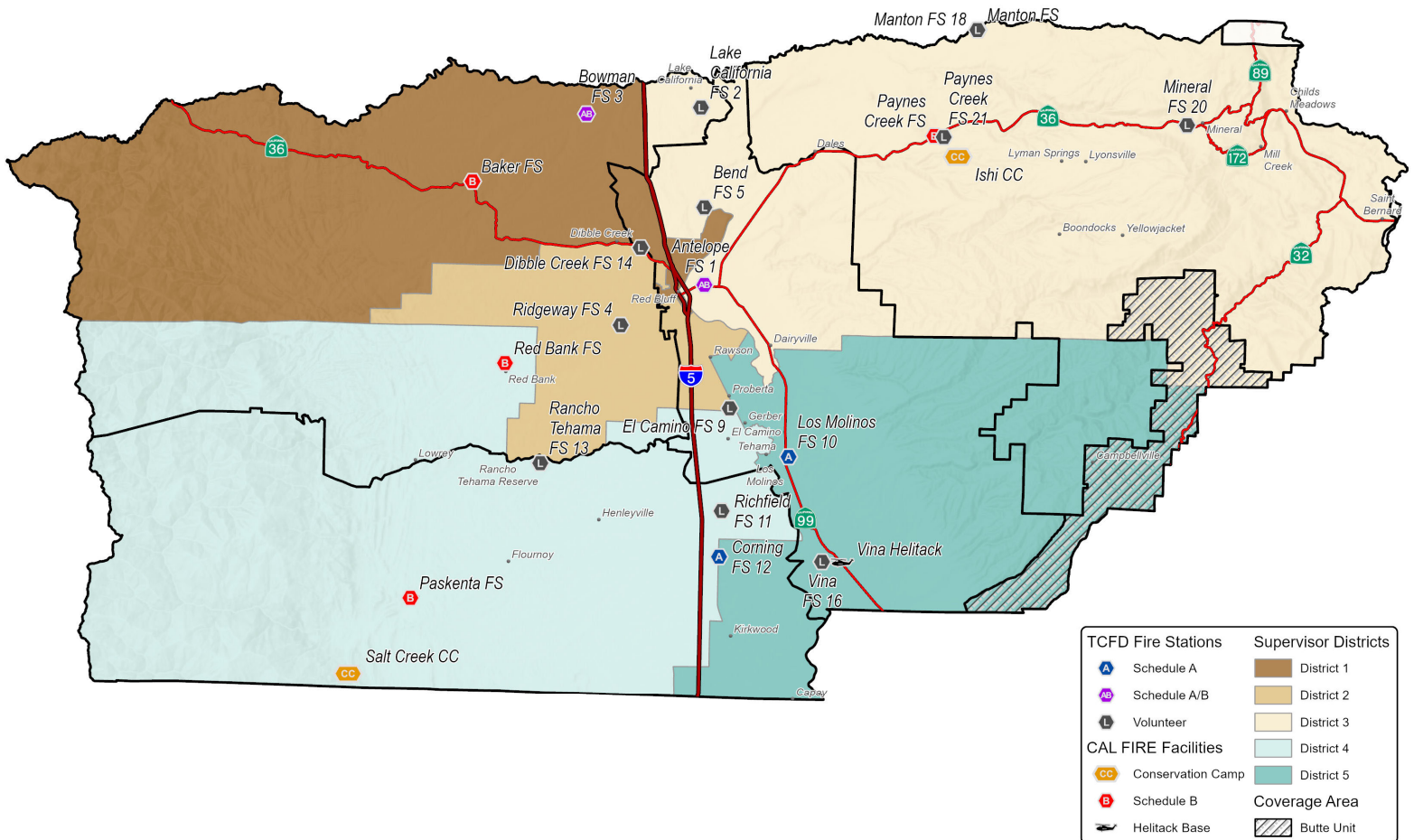
**Gabriel Hydrick**  
Chief Administrator



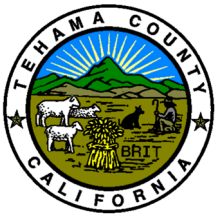


# TEHAMA COUNTY BOUNDARIES

## BATTALIONS & DISTRICTS



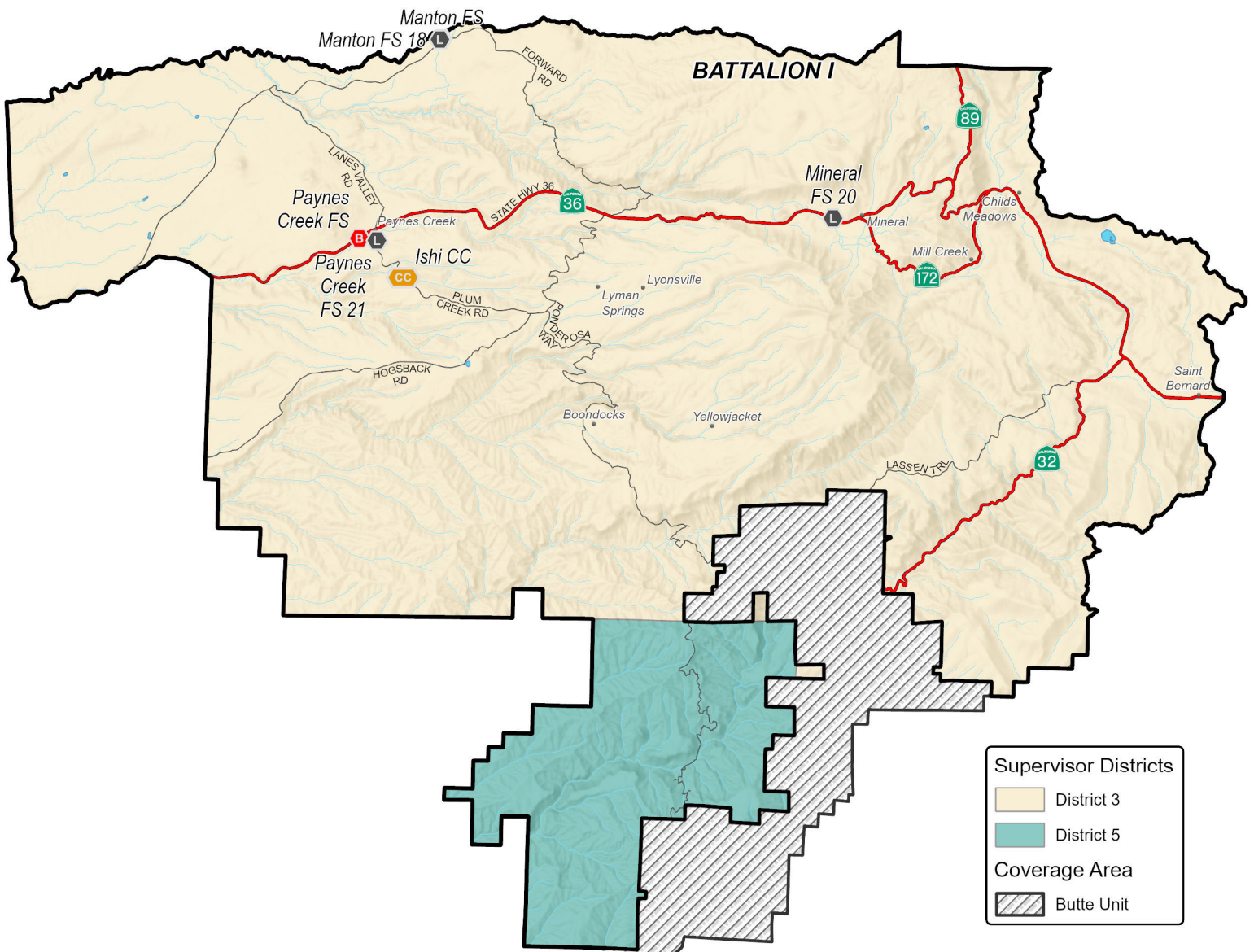


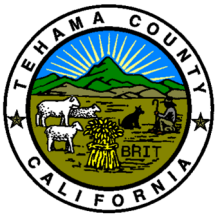


# BATTALION 1 - DISTRICTS 3 & 5

## EAST DIVISION

Battalion 1 lies in the northeast corner of Tehama County. The Battalion runs from the base of the foothills on the east side of the Sacramento Valley to the Plumas County line, and from the Butte County line in the south to the Shasta County line. The Battalion encompasses the communities of Manton, Mineral, Mill Creek, Paynes Creek, and Ponderosa Sky Ranch. The communities of Mineral and Mill Creek are recognized as Firewise USA Communities. The Firewise USA status has secured grant funding for a 416-acre project to remove hazard trees around Mineral.

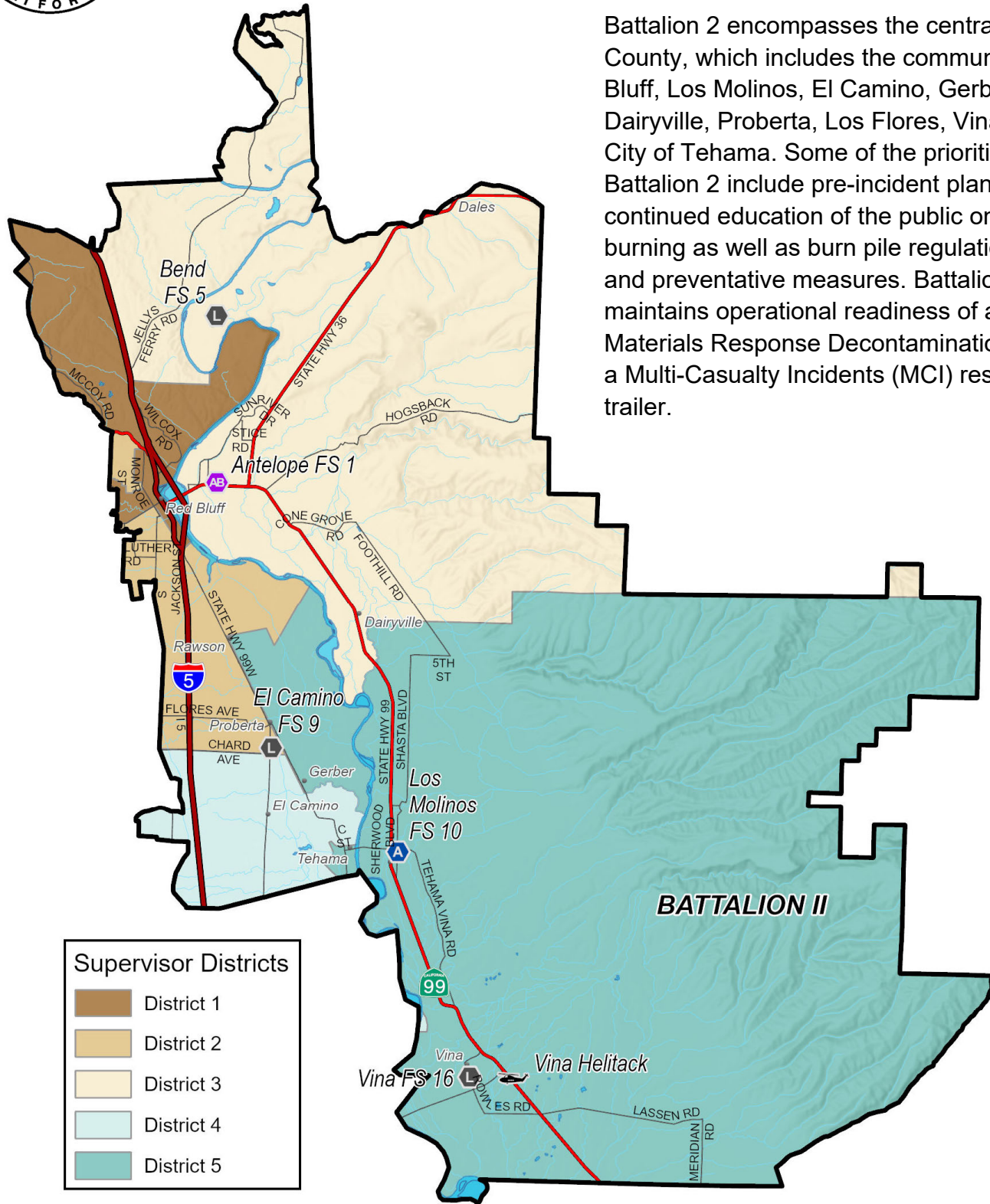




# BATTALION 2 - DISTRICTS 1-5

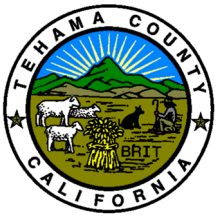
## EAST DIVISION

Battalion 2 encompasses the central part of the County, which includes the communities of Red Bluff, Los Molinos, El Camino, Gerber, Bend, Dairyville, Proberta, Los Flores, Vina, and the City of Tehama. Some of the priorities for Battalion 2 include pre-incident planning, continued education of the public on dooryard burning as well as burn pile regulations, risks, and preventative measures. Battalion 2 also maintains operational readiness of a Hazardous Materials Response Decontamination trailer and a Multi-Casualty Incidents (MCI) response trailer.



Supervisor Districts	
	District 1
	District 2
	District 3
	District 4
	District 5

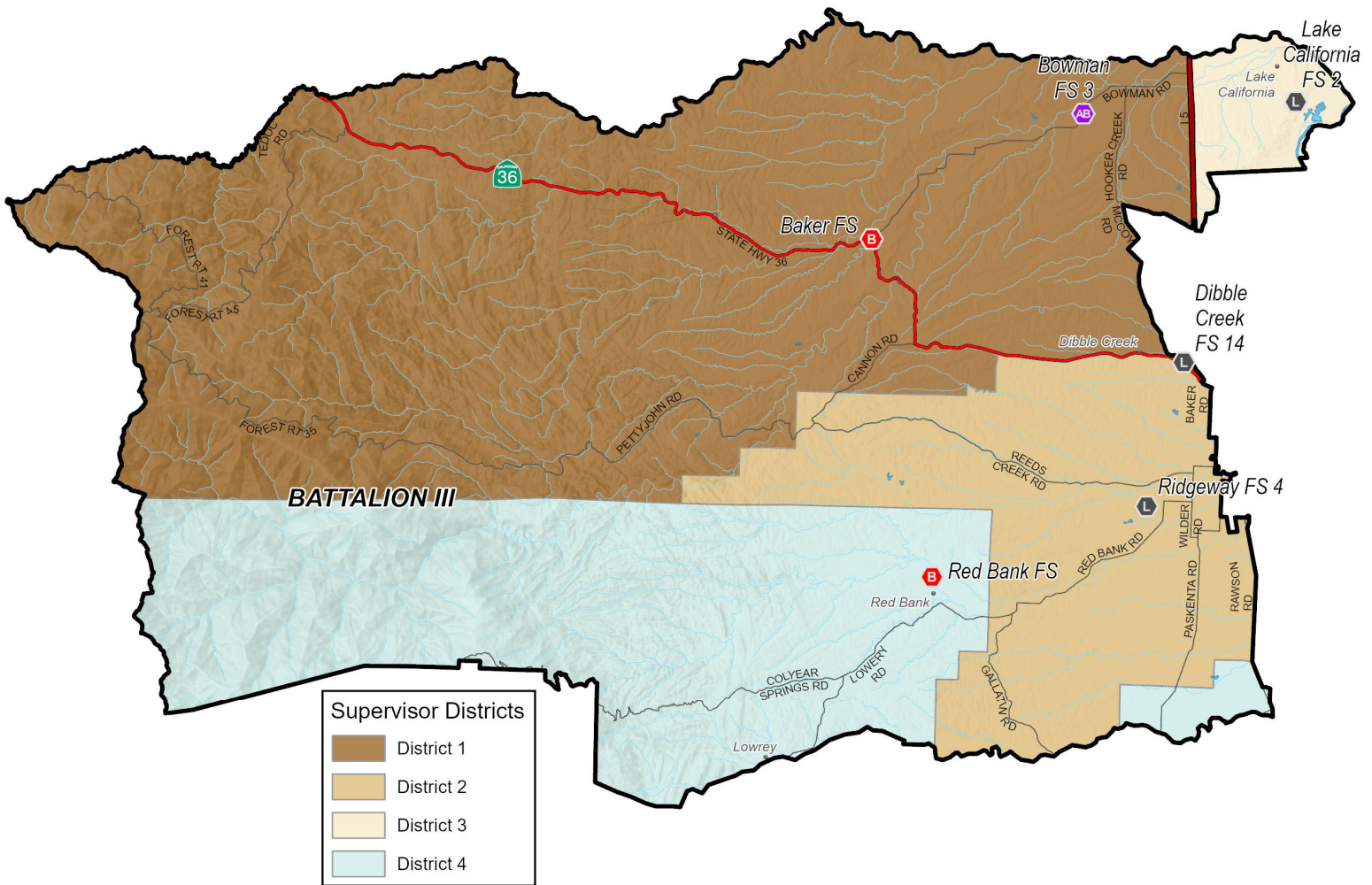


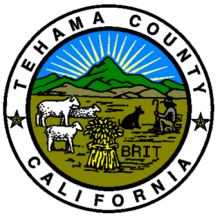


# BATTALION 3 - DISTRICTS 1-4

## WEST DIVISION

Battalion 3 lies in the northwest portion of Tehama County and includes the communities of Lake California, Bowman, Dibble Creek, R-Wild Horse Ranch, Ridgeway, and Red Bank. The Battalion runs from the I-5 corridor, through west Red Bluff, to the Trinity County line. The Battalion runs from the Shasta County line in the north to Elder Creek to the south. Battalion 3 is currently focusing on developing and improving water sources used for fire protection, as well as burn projects and defensible space inspections.

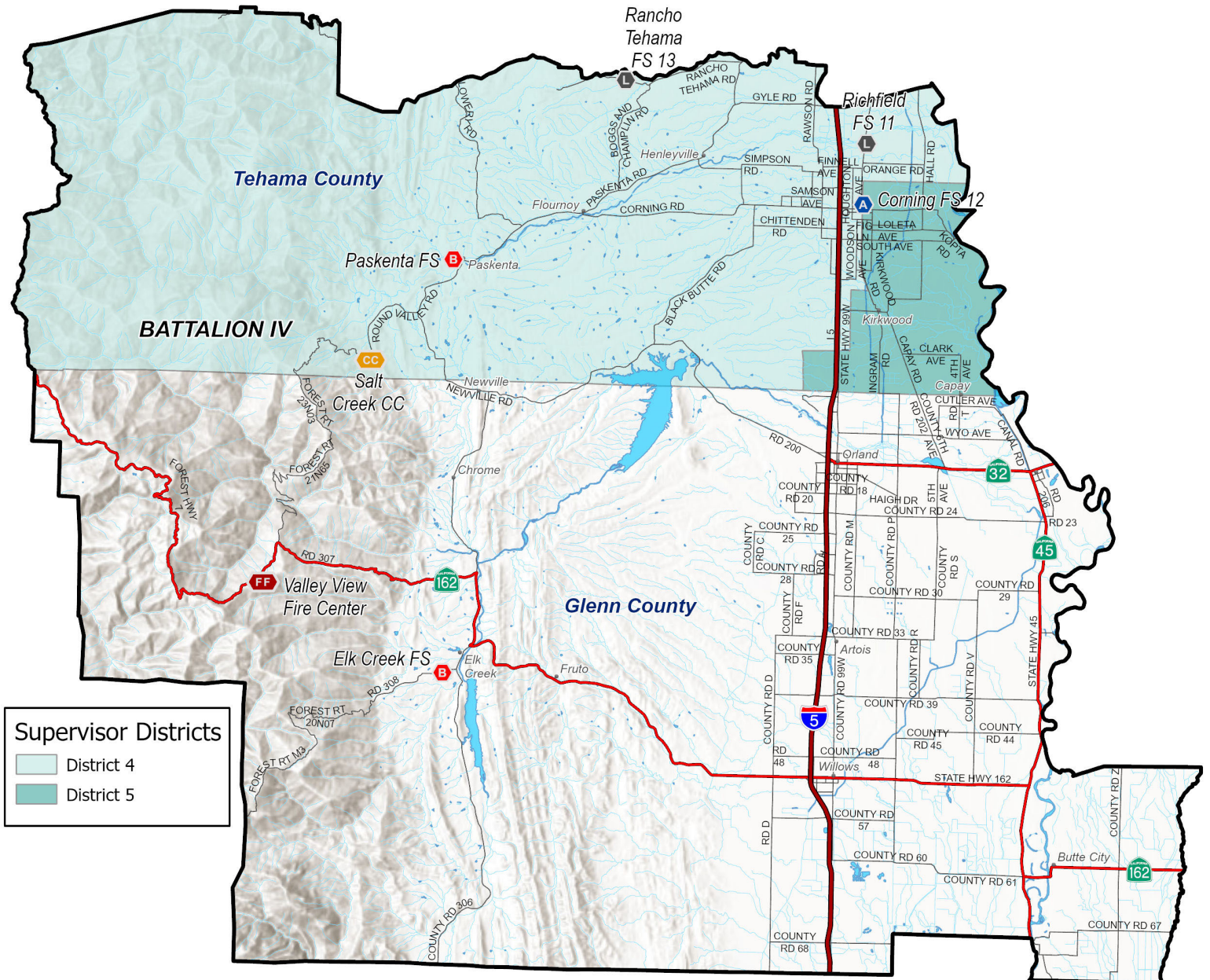




# BATTALION 4 - DISTRICTS 4 & 5

## WEST DIVISION

Battalion 4 encompasses the southern portion of Tehama County including all the State Responsibility Area (SRA) of Glenn County. Communities within the Battalion include Richfield, Corning, Rancho Tehama, Fournoy, Henleyville, Paskenta, Chrome, Grindstone Rancheria, Stonyford, and Elk Creek. Outside of the larger communities, the population is dispersed through rural residences and ranchlands.



**Supervisor Districts**

- District 4
- District 5





# TEHAMA COUNTY FIRE

## NOTABLE ACCOMPLISHMENTS

The siding, roof, and doors were replaced at Dibble Creek Fire Station 14.

Lead Department on Multi-Jurisdictional Hazard Mitigation Plan for Tehama County. The draft plan has been completed and now in review.

Received delivery of five new Type 6 Fire Engines and purchased new Self-Contained Breathing Apparatus.

Volunteer Firefighters dedicated 4,782 hours committed to the Park Fire.

Purchased new PPE for Volunteers through the Volunteer Fire Assistance Grant.

The motor on 5C34 (old E-110) was reconditioned by Caietti's Truck Repair in West Sacramento. It is now E-102 at Lake California Fire Station 2.

5C35 (old E-112) was removed from frontline service and repurposed as a dedicated training engine.

Shaunte Stewart was hired 1/2/2024 for a total of 2 Fire Safety Inspectors. He completed 88 hours of Inspector Training in 2024.

Purchased Elevator Rescue Tools for Corning and Los Molinos Fire Stations. They are the 1<sup>st</sup> Elevator Tools purchased for Tehama County Fire.

Purchased two F-250 pickups from Watsonville Fleet Group for the Fire Marshal and Training Captain.

Ridgeway Fire Station 4 had a tree removed and another tree trimmed by Conley Tree and Brush, to ensure the safety of the public and to meet defensible space standards.

Purchased Tactical Wildland Pants for Volunteers to ensure the best PPE is available.

Replaced lighting at Lake California Fire Station 2.

A new two-year MOU was signed with Dignity Health for Dispatching Services.

A new SHIELD Agreement was signed on 7/1/2024 to facilitate regional training for Volunteers and Career Staff.

Completed and signed the Rancho Tehama Fire Station 13 Lease Agreement.



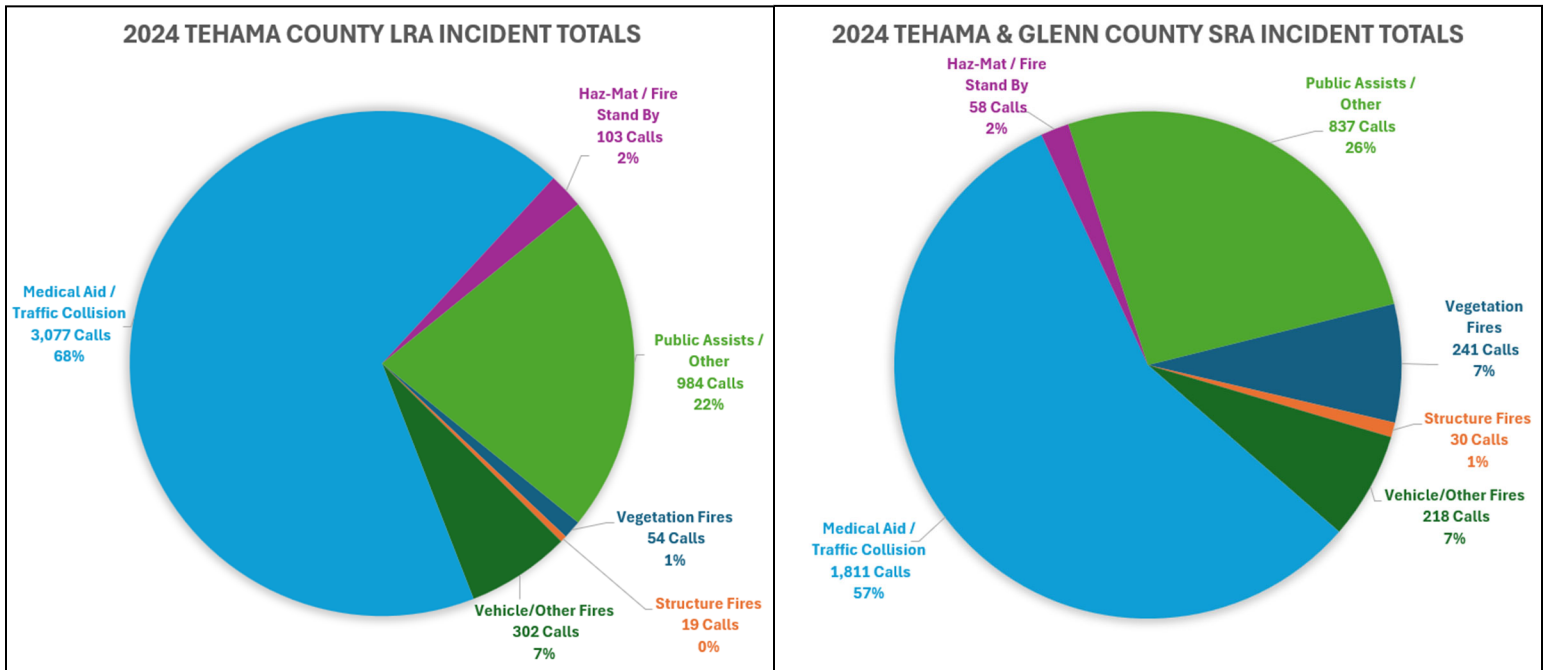


# CAL FIRE RED BLUFF ECC

## EMERGENCY COMMAND CENTER

The CAL FIRE Tehama Glenn Unit Emergency Command Center (TGU ECC) is a full-service command and control center that provides dispatch services to state and local fire agencies within Tehama and Glenn Counties. A total of 24 Fire Stations, two Conservation Camps, one Fire Center, and one Helitack Base are those dispatched by the TGU ECC. The TGU ECC is also contracted to provide dispatch services to Dignity Health Ambulance, serving St. Elizabeth Hospital, and Red Bluff City Fire Department.

The TGU ECC is a secondary public safety answering point (PSAP) that is staffed 24 hours, 7 days a week, 365 days a year. The TGU ECC staffing consists of 1 Battalion Chief, 6 Fire Captains, 1 Communications Supervisor, and 5 Communications Operators. In 2024, the TGU ECC dispatched 15,086 calls for service. The pie charts below depict the 4,539 calls within the LRA in Tehama County, and the 3,195 calls within the SRA in Tehama and Glenn Counties.



**COMBINED TOTAL OF INCIDENTS.....7,734**

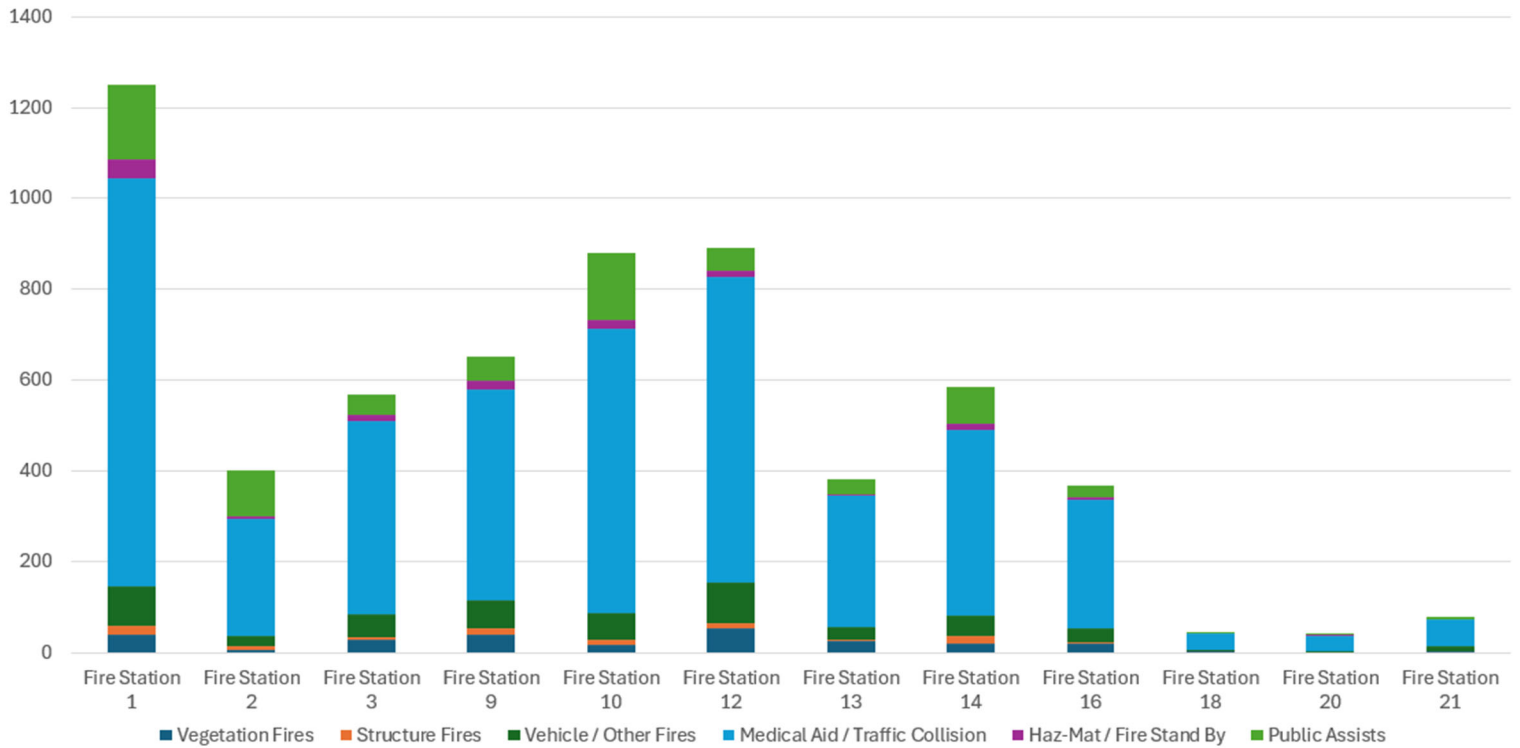




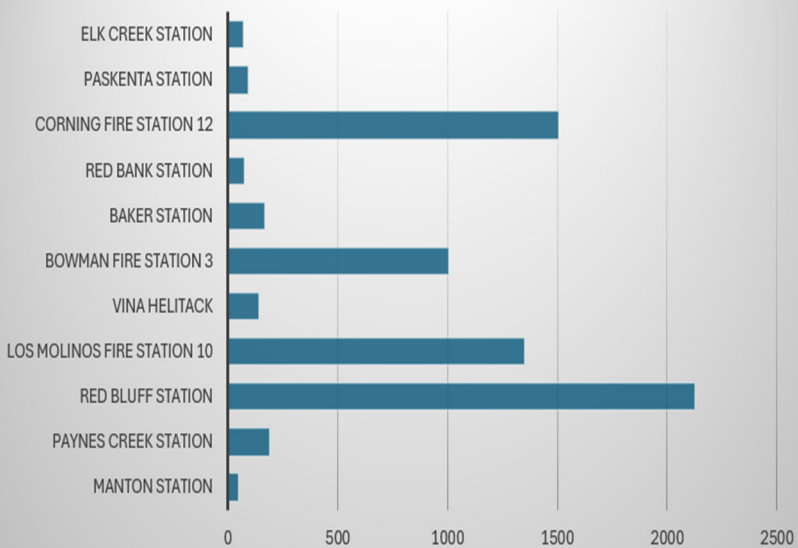
# CAL FIRE / TEHAMA COUNTY

## CALL VOLUME BREAKDOWN

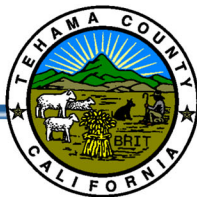
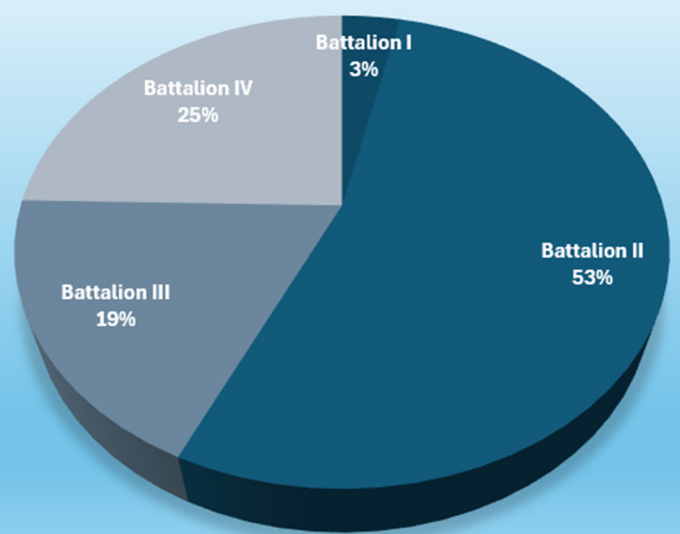
CALL VOLUME BY TEHAMA COUNTY FIRE STATIONS



CALLS BY CAL FIRE STAFFED STATIONS



CALLS BY BATTALION





# TEHAMA COUNTY FIRE

## VOLUNTEER FIREFIGHTER PROGRAM

The Volunteer program is an integral part of Tehama County Fire. Volunteer Firefighters are relied on to respond to emergency incidents throughout the County. Tehama County Fire Volunteers respond to emergency incidents in a variety of equipment including Fire Engines, Water Tenders, Squads, and Breathing Support Units. They perform the full range of all-risk firefighting duties including structure, vegetation, and vehicle fire suppression, medical aids, traffic collisions, and other related emergencies.

We currently accept applications on a continuous basis for all Volunteer companies in Tehama County. Applications are available from the CAL FIRE / Tehama County Fire Headquarters Building, located at 604 Antelope Boulevard in Red Bluff, and on the TCFD Website: [www.tehamacountyfire.org](http://www.tehamacountyfire.org). The applications are also available at many of our local fire stations.

During the 2024 calendar year, Tehama County Fire Volunteers showed their dedication to the County of Tehama and its citizens by donating 16,346 hours to emergency and non-emergency incidents and over 4,200 hours of training. There are currently 76 active Tehama County Fire Volunteers in various companies throughout Tehama County.

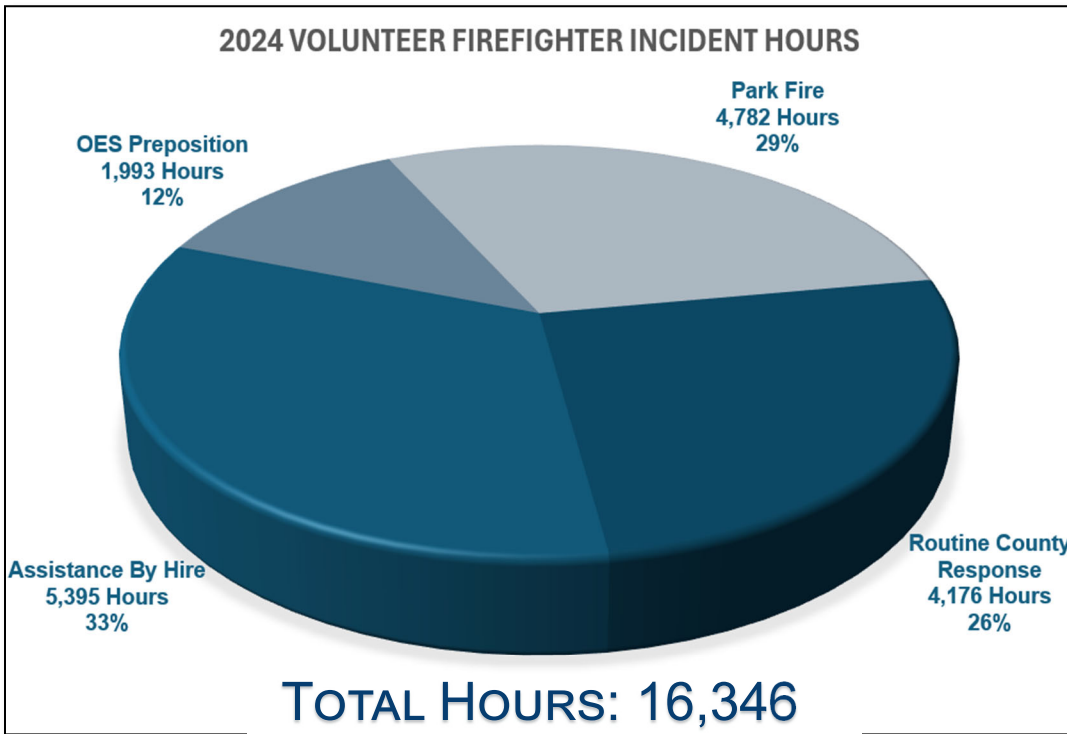
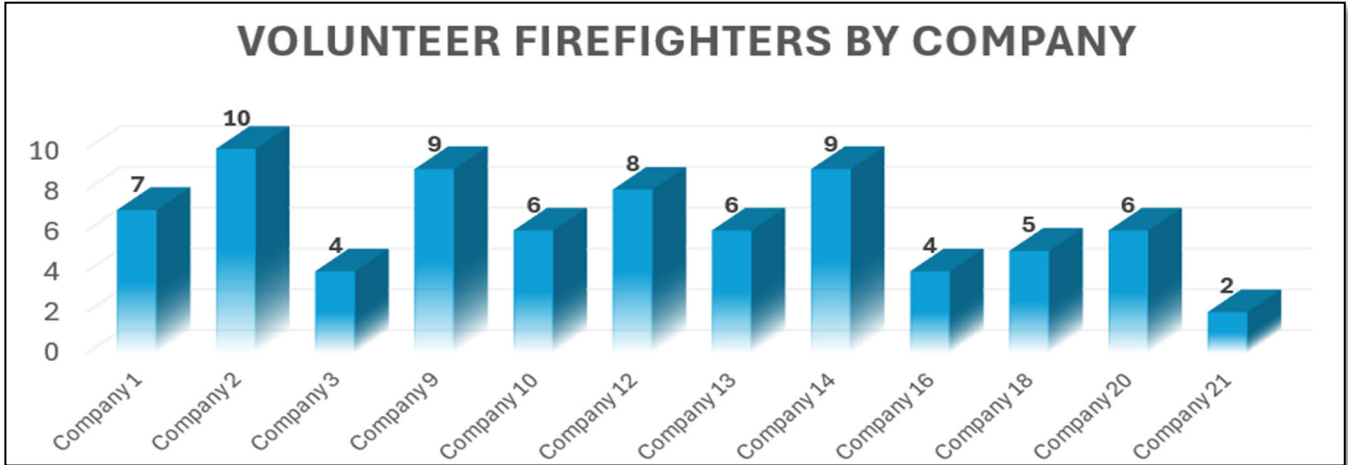






# TEHAMA COUNTY FIRE

## VOLUNTEER FIREFIGHTER COMPANY & HOURS BREAKDOWN



- Assistance By Hire (ABH) hours are accumulated when the Volunteer Firefighters are used to staff fire engines at CAL FIRE Stations during times of State Resource draw-down. The hours are also used when the Volunteer Firefighters are committed to a State Responsibility Area fire longer than two hours.
- Routine County Response hours are accumulated from everyday calls for service. This includes medical aids, traffic collisions, fires, smoke checks, etc.

- Office of Emergency Services (OES) Preposition hours are accumulated when the Volunteer Firefighters staff resources available for the Tehama Operational Area during significant weather events. This can be done year-round.
- Park Fire hours indicate time the Volunteers were assigned to the Park Fire affecting eastern Tehama County in 2024.





# CAL FIRE / TEHAMA COUNTY FIRE TRAINING BUREAU

The mission of the CAL FIRE / Tehama County Fire Department Training Bureau is to assure quality service to the public by developing the skills and abilities of all TGU & TCFD Career and Volunteer personnel through training that is economical, effective, and consistent with the needs of the public, the County of Tehama, the Department, and the employee. The Training Bureau consists of one Battalion Chief, three Fire Captains, one Office Assistant III, and one Staff Services Analyst.

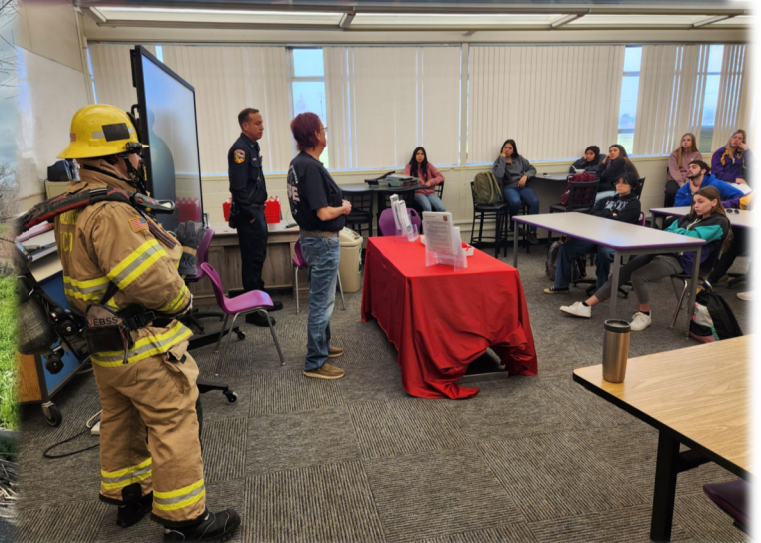
The Training Bureau provides instruction and training support for the 5 Tehama County Fire Employees, 76 TCFD Volunteer Firefighters, and 408 CAL FIRE employees. Instruction is provided through direct classroom instruction as well as online training. The online training is provided by Vector Solutions, a program that provides cost efficient self-paced training and maintains records and certifications for all fire department personnel. The Vector Solutions program is used by all the Tehama County Fire Department Employees and Volunteers. TCFD Volunteer Firefighters logged 4,200 hours of training in 2024.

# 80

## MONTHLY TRAINING HOURS

# 4,200

## YEARLY TRAINING HOURS





## TRAINING REQUIREMENTS



# 76 9

Current Active & Training Active Volunteers

New Volunteer Applicants

### VOLUNTEER FIREFIGHTER

Position Description

Under supervision, as a member of a Volunteer Fire Company, perform a full range of all-risk duties including structure, vegetation, and vehicle fire suppression, medical aids, traffic collisions, and other related emergencies. Assist in facility, grounds, and equipment maintenance.

### REQUIRED TRAINING TO BECOME AN ACTIVE VOLUNTEER FIREFIGHTER IN YOUR COMMUNITY

Mandated training prior to responding to incidents:

- 32-hour Basic Operations Class
- 24-hour Hazardous Materials FRO

Mandated training within the first year:

- 20-hour Public Safety-First Aid
  - 8-hour C.P.R
- 4-hours Communicable Disease Awareness

To remain active, TCFD Volunteer Firefighters must attend trainings, complete annual recertifications, and complete their annual Respiratory Protection Program (RPP) review.

- 4-hour Public Safety-First Aid (Recert)
- 2-hour Communicable Disease Awareness (Recert)
  - 4-hour C.P.R. (Recert)
- 4-hour Hazardous Materials FRO (Recert)

# 102

## REQUIRED TRAINING HOURS





# PUBLIC INFORMATION

## EDUCATION & COMMUNITY EVENTS

The Information and Education staff participated in numerous events this year.

Events included the Red Bluff Round-Up, Tehama District Fair, Manton Apple

Festival, Corning Olive Festival, Dairyville Orchard Festival, the Marine Corps Reserve Toys for Tots Toy Drive, and the Salvation Army Food Drive. Personnel also attended multiple Career Day events throughout Tehama County. Approximately 23,410 public contacts were made during these events. CAL FIRE, Tehama County Fire Department, and Volunteers in Prevention (VIP's) personnel completed 1,338 hours supporting fire prevention events. 1,000 media contacts were made providing information on current emergencies, as well as general fire and life safety information. There was a significant increase in media contacts due to the Park Fire.

Information and Education staff continue social media posts on Fuel Reduction Projects, training, public events and emergency incidents that have taken place in the Tehama-Glenn Unit. Content is posted on CAL FIRE/TCFD social media accounts. The CAL FIRE/TCFD Facebook Page has 17,000 followers and the CAL FIRE/TCFD "X" Page (formerly Twitter) has 3,653 followers.





# CAL FIRE / TEHAMA COUNTY FIRE

## MOBILE EQUIPMENT & REPAIR

The CAL FIRE / Tehama County Fire Automotive Program consists of a Forestry Equipment Manager, four State mechanics, two County mechanics, and nine State Heavy Fire Equipment Operators. The Automotive Program utilizes four different shop locations, one at Red Bluff Headquarters, and one at each of the Unit's Conservation Camps and Fire Center, to maintain over 234 individual pieces of State equipment and 62 pieces of County equipment.

Our automotive program staff have the expertise and knowledge to repair equipment and oftentimes fabricate parts to fit the needs; providing emergency repairs 24 hours a day, 7 days a week, and 365 days a year. The staff receives up-to-date training of fire pump repairs and electronic controlled devices used on today's Fire Apparatus by attending annual Fire Marshal training courses.

Over 95% of all repairs are done in-house reducing the overall cost of repairing and maintaining the fleet, compared to outsourcing these services. With the average age of the County's Fire Engines being over 25 years, Water Tenders at 26 years, and Rescue Squads at 21 years, the repair facilities play a vital role in keeping the fleet in service and ready to respond to emergency calls.



### TEHAMA COUNTY FIRE & CAL FIRE TGU INFRASTRUCTURE

TEHAMA COUNTY FIRE DEPARTMENT		CAL FIRE TEHAMA GLENN UNIT	
FIRE STATIONS	15	FIRE STATIONS	8
FIRE ENGINES	32	FIRE ENGINES	19
RESCUE SQUADS	7	BULDOZERS	3
WATER TENDERS	10	HELITACK BASE	1
INCIDENT/BREATHING SUPPORT UNIT	1	FIRE CENTER	1
ADMINISTRATION VEHICLES	10	CONSERVATION CAMP	2
HAZMAT DECON SUPPORT UNIT	1	LOOKOUTS	3
MCI TRAILER	1	EMERGENCY COMMAND CENTER	1



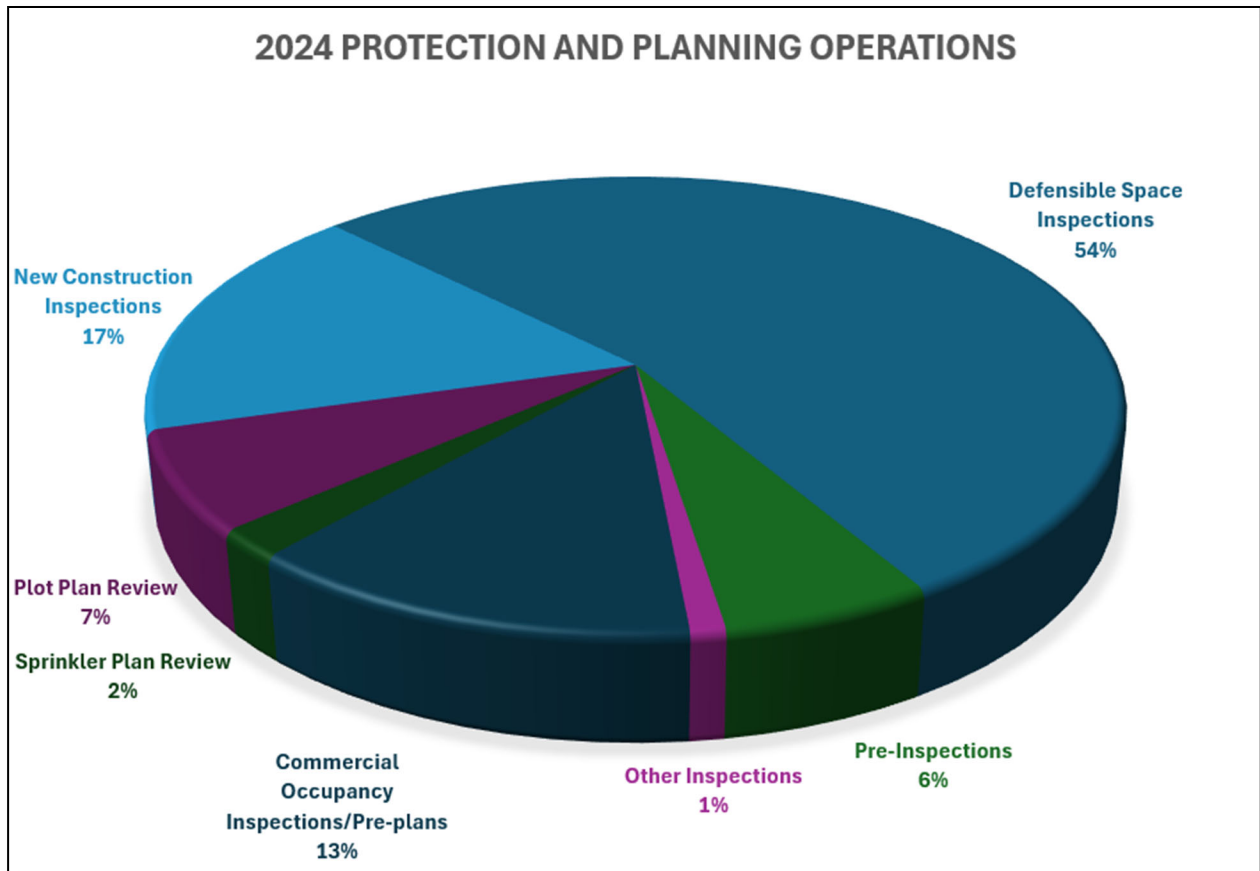
# FIRE MARSHAL'S OFFICE

## PROTECTION & PLANNING BUREAU

The Tehama County Fire Protection Planning Bureau consists of the Tehama County Fire Marshal and two Tehama County Fire Safety Inspectors. As mandated by California Fire Code and Tehama County Ordinances, our goal is to enforce fire safety standards, provide direction, information, and education to the citizens of Tehama County. This is done to prevent injury to the public, commercial employees, as well as reduce fire loss to commercial properties or production. The Fire Marshal is an active member of the Tehama County Technical Advisory Committee (TAC), where new subdivisions, parcel splits, new roads, and special developments within Tehama County are reviewed and conditioned to meet land development standards.

The Tehama County Fire Safety Inspectors took part in events throughout the year such as the Tehama District Fair, Dairyville Orchard Festival, 4th of July Firework enforcement patrols, and the numerous parades in the County.

During 2024, the Tehama County Fire Safety Inspectors completed 3,170 total inspections. The Inspectors drove 18,723 miles, logged 1,008 hours of inspections/public education contacts, and answered over 1,923 phone calls. Of the total inspections, 1,417 were defensible space inspections and 1,134 were new building/commercial compliance inspections within Tehama County.





# TEHAMA GLENN UNIT

## PRE-FIRE PLANNING PROGRAM

The Tehama Glenn Unit (TGU) Pre-Fire Planning program is a critical component of California's strategy to mitigate wildfire risks and protect communities. By focusing on fuels reduction and other preventative measures, the program aims to:

### Reduce Fire Hazard and Risk:

**Fuel Reduction:** By reducing the amount of flammable material, the program helps to slow the spread of wildfires, reduce their intensity, and protect communities.

**Strategic Planning:** The program aligns with state and federal wildfire plans, ensuring a coordinated approach to fire management.

### Protect Lives and Property:

**Community Protection:** By targeting high-risk areas, the program helps to safeguard homes, businesses, and critical infrastructure.

**Evacuation Planning:** The program encourages emergency preparedness and evacuation planning to minimize loss of life and property damage.

**Community Engagement:** Effective communication and collaboration with local communities are essential for successful implementation of the program.

### Preserve Ecosystems:

**Forest Health:** By reducing fuel loads, the program helps to improve forest health and reduce the risk of catastrophic wildfires that can devastate ecosystems.

**Climate Change Mitigation:** Healthy forests act as carbon sinks, helping to mitigate climate change. By reducing wildfire risk, the program contributes to long-term forest health and carbon sequestration.

## 2024 FUELS REDUCTION IN TEHAMA COUNTY

### Projects

• 28

### Broadcast Burning

• 210.7 Acres

### Fuel Reduction

• 1,147.9 Acres

### Fuel Break

• 17.8 Acres

### Right of Way Clearance

• 161.8 Acres

### Total Fuel Reduction Activities

• 1,538.2 Acres





# PREVENTION

## LAW ENFORCEMENT BUREAU



In 2024, the CAL FIRE Tehama Glenn Unit Fire Prevention Law Enforcement Officers investigated 221 fires compared to 257 Fire Investigations in 2023. Of the 221 fires investigated in 2024, 117 of those fires were located within the Tehama County Fire Department's jurisdiction. The total estimated loss from fires in Tehama County jurisdiction in 2024 was approximately \$2,229,750. The total estimated property saved from fires in 2024 was estimated to be \$8,312,660.

There were 17 Local Responsibility Area (LRA) arson caused fires investigated in 2024. Arson continues to be a problem in our area. The CAL FIRE Tehama Glenn Unit Fire Prevention Law Enforcement Officer's investigations lead to the apprehension or citations for human caused fires. Officers are currently working on multiple arson-related cases. Escape control burns continue to be one of our leading fire causes. Through public education programs, it is our goal to reduce preventable fires.

CAL FIRE Prevention Law Enforcement Officers provided investigation, enforcement, and public education programs for Tehama County Fire. CAL FIRE continued to conduct defensible space inspections throughout the county. In 2024, we utilized Defensible Space Inspectors to conduct 8,332 defensible space inspections throughout Tehama County in the SRA, providing education, guidance, and enforcement of defensible space around structures.

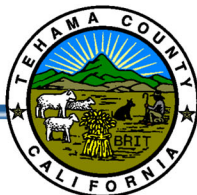
## DEFENSIBLE SPACE TOTALS

Local Responsibility Area (LRA)

**1,417**

State Responsibility Area (SRA)

**6,915**







# CDCR - SALT CREEK CONSERVATION CAMP



Salt Creek Conservation Camp has been providing all-risk emergency services to the citizens of Tehama County and California since 1987. Salt Creek Camp is located southwest of the community of Paskenta in western Tehama County. The Incarcerated Persons assigned to Salt Creek Conservation Camp are considered low risk under the cooperative direction of the California Department of Corrections and Rehabilitation and CAL FIRE. Our fire crews are capable of responding to a variety of emergencies including wildland fires, floods, rescues, and other natural disasters.

In addition to emergency response, our crews provide community service project work with local agencies in Tehama, and Glenn Counties. When not responding to emergencies and working on community service projects, Salt Creek Camp crews complete several work projects for federal, state, local and other public agency organizations. The work projects priority for our fire crews generally revolves around wildland fuels and hazard reduction. Clean-up, construction, and other services are provided to public agencies needing a larger labor pool than they are able to produce internally.

In 2024, Salt Creek Camp logged over 46,642 hours in community service projects and provided over 86,160 hours fighting fires throughout Tehama County and the State of California. In addition to our fire crews, Salt Creek Camp houses a Bulldozer unit that responds to emergencies throughout the region and state.

Staffing at Salt Creek Camp consists of three Fire Crews, 12 Fire Captains, three Heavy Fire Equipment Operators, one Stationary Engineer, one Office Technician, and one Assistant Chief.





# CDCR - ISHI

## CONSERVATION CAMP



Ishi Conservation Camp is located on the eastern edge of the Tehama Glenn Unit, 25 miles east of Red Bluff, near the community of Paynes Creek. Construction of the Camp began in 1959 and was opened in April of 1961, at which time it was named Plum Creek Conservation Camp. At the end of 1968, Plum Creek (Ishi) had the capacity for 4 crews and was one of the thirty-three camps statewide that comprised the Conservation Camp Program.

During the Vietnam War, the Camp was closed and the newly formed Ecology Corps (the predecessor to the California Conservation Corps) controlled the grounds. In 1976, the California Conservation Corps (CCC) was established, and Plum Creek became a CCC center. In 1981, the California Department of Corrections entered a cooperative agreement with the California Department of Forestry. In 1982, Ishi Conservation Camp was established and remains a Conservation Camp to this day. Since 1985, Ishi Camp has hosted the Ishi Preparedness Exercise. The Ishi Exercise evaluates the fire readiness of over 40 Northern California Fire Crews, making it one of the largest exercises in the state. The Crews participating in the exercise include National Guard crews, Fire Fighter 1 crews, California Conservation Corps crews, and California Department of Corrections and Rehabilitation inmate crews.

The camp is staffed 24 hours a day, 7 days a week with both CDCR and CAL FIRE staff and has the capacity to house 100 incarcerated persons to staff the fire crews and support in-camp operations. The Camp's primary mission is wildland fire suppression, however, the crews are available to respond to all types of emergencies including floods, snow removal, earthquakes and storm clean-up. Ishi crews frequently respond to emergency incidents in eastern Tehama County, southern Shasta County, western Lassen County, and northern Butte County as well as numerous incidents statewide. In 2024, Ishi Camp crews provided 80,435 hours of emergency response continuing the effort to serve and safeguard the people and protect the property and resources of California.

Although fire is an essential ecological process, many parts of the state are more vulnerable to severe wildfires, droughts and impacts from a changing climate. CAL FIRE, our local grantees, and Ishi Conservation Camp are dedicated to removing overgrown vegetation through prescribed fire, tree thinning, pruning, chipping and roadside clearance. Through these efforts we create breaks in the vegetation that can change fire behavior, reduce negative ecosystem impacts, and enable Firefighters to protect communities. A few of the major fuels reduction projects on the east side of the unit, are the Meadow Brook Ranch, the Paynes Creek Sportsman's Club, the Fornage Ranch, and SPI Fuel Breaks. These projects alone comprise over 10,000 acres of continuing fuels treatment, all with the goal of reducing fire hazards and preventing uncontrolled wildfire spread in the State Responsibility Area. Ishi Camp works with various stakeholders on these projects including Local, State, and Federal jurisdictions as well as private landowners, local Fire Safe Councils, and Watershed Districts.



Ishi crews are an important and valuable resource to our local community, participating in the Adopt-A-Highway Program and providing 152 hours of campus cleanup and improvement for multiple school districts throughout the county of Tehama, and 10 days of community service work. Ishi Camp also works with Tehama County Social Services to provide 40-50 new bicycles to children in need throughout Tehama County. Ishi Camp also donates to the Marine Corp Reserves Toys for Tots and the Salvation Army Food Drive annually, all made possible by our firewood program.



# CAL FIRE / TEHAMA COUNTY FIRE

## AWARDS & HONORS

### CORNING EXCHANGE CLUB

### 2024 FIREFIGHTERS OF THE YEAR



**Heavy Equipment Mechanic Corey Shackelford (center) for CAL FIRE TGU and Public Safety Vehicle and Equipment Mechanic III Dave Haugen (right) for Tehama County Fire Department**

## PREVIOUS FIREFIGHTERS OF THE YEAR

### TEHAMA COUNTY FIRE DEPARTMENT

CODY LESTER - 2023

CHRIS WIKEEN - 2022

KEN JOHNSON - 2021

### CAL FIRE TEHAMA GLENN UNIT

CHRIS WUELFING - 2023

RYAN ELLIS - 2022

MATT TROEHLER - 2021



DEDICATED TO THE PROTECTION OF LIFE,  
PROPERTY, AND ENVIRONMENT



## TEHAMA COUNTY FIRE DEPARTMENT

Monty Smith - Unit / Fire Chief

604 ANTELOPE BOULEVARD, RED BLUFF, CA 96080

530-528-5199

[www.tehamacountyfire.org](http://www.tehamacountyfire.org)



[www.facebook.com/CALFIRETGU](https://www.facebook.com/CALFIRETGU)



[www.instagram.com/calfiretgu\\_tcf](https://www.instagram.com/calfiretgu_tcf)



<https://x.com/CALFIRETGU>