



December 18, 2025

Mr. Paul Freund  
Landfill Agency Manager  
Tehama County/ Red Bluff Landfill Management Agency  
20000 Plymire Road.  
Red Bluff, CA 96080

**RE: PROJECT PLAN FOR OCC SCREEN CONSIDERATION  
TEHAMA COUNTY / RED BLUFF LANDFILL**

---

Dear Mr. Freund:

This letter is an update for JPA consideration to add an old corrugated cardboard (OCC) screen to the Material Processing Facility (MRF) at the landfill. This update is similar to the project plan and OCC screen consideration requested by and submitted to Rachel Ross-Donaldson on February 29, 2024. This update reiterates the background for the OCC screen and provides updated portions, including current dates, costs, impacts to operator personnel, and a recommendation to not proceed with this equipment for the Tehama MRF (as Operator for the Agency).

The Landfill and associated MRF are included within the approved Operator Agreement between Waste Connections and the Agency. In accordance with Section 4.U of the Agreement, the parties “...acknowledge the importance of operating the MRF in a safe and efficient manner is of utmost importance. By the effective date of this Agreement, Contractor shall furnish a cost estimate, and its impact to the Contractor Tipping Fee, and project plan, which includes a completion date, to install an old corrugated cardboard (OCC) screen in the MRF for JPA consideration. Upon approval by the JPA, Contractor shall execute project plan in its entirety within the project timeline.”

The Effective Date of the Agreement was March 1, 2024 with the prior submitted document provided in advance of that date. As background, the Materials Recovery Facility (MRF) includes operations within a covered structure that generally include a west half and east half of operations. The west half operation includes an in-bound commingled recycling material surge

pile, existing sort line conveyor, sort line, and sorting binds. The east half includes sorted surge piles area and then a baler feed conveyor, baler, and minor bale storage.

Current operations including manual sorting of commingled recycled material for subsequent baling and transport from site. The OCC consideration is to include a mechanical means to separate OCC from the commingled recycling feedstock. For assessment purposes, this considers: (1) physically adding an OCC screen, (2) review operational throughput volume, (3) impact on staffing and site constraints, (4) overall cost and impact to landfill tipping fees, and (5) operator recommendation.

### **Physical Addition**

Site layouts to incorporate the OCC screen focused on retaining the baler and offices at the east end of the covered building. The attached layout from KGEL steel (Attachment A) shows the layout necessary to incorporate the OCC screen within the existing MRF structure.

As shown on the exhibit, materials would be loaded from the northerly (front opening) of the building and then proceed to the following:

- Conveyors to the pre-sort station. This station requires 4 attendees and is critical to the operation to properly separate out rigids, trash, and undesirable materials.
- OCC Screen – this includes unders (undersized materials) that are circulated back to the container line, and overs (OCC) that continue to the OCC Overs line.
- OCC overs and sort line
- Container sort line to magnet and onto a glass separator.

Depending on the sorted materials, they either continue to the baler or direct to containers.

### **Operational Tonnages and Throughput**

Received materials to the MRF include loads from Commercial (received daily) and Residential pickup (every other week). The following volumes were used for average purposes from October 2023 received volumes<sup>1</sup>, including:

342	tons received (month total)
<i>of which:</i>	
75	tons Commercial (received daily)
267	tons Residential (received every 2 weeks)
<i>then:</i>	
3.75	Daily Inbound Commercial (based on 20d per month - conservative)
26.7	Daily Inbound Res (based on average over 10d (2 wks) per month)
30.45	Total Daily Inbound avg (on an every-other-week frequency)

---

<sup>1</sup> The 2023 volumes were included in the original February 2024 document to Rachel Ross and are generally unchanged for 2024 volumes. These numbers remain for consistency and all costs shown were based on 2023 and early 2024 estimates.

On weeks residential is collected, this equates to roughly 31 tons per day (tpd) received. On off-weeks, the average (Commercial only) is significantly less volume at 4 tpd received.

OCC screen design capacity by itself is 25-30 tons per hour of production with a maximum turn-down (minimum production) rate of 10 tph. The sort line is the limiting throughput factor and based on the design shown (4-person at the pre-sort station) is estimated at 10-12 tons per hour (tph) as a maximum production rate. Based on this range and maximum turn-down rate for the unit, 10 tph is used as a minimum for a consistent production/throughput rate...

Based on the above on-week volume of 31 tpd, the OCC screen (and sort lines) would operate 3 running hours (daily) and operated less than 1-hour per day on off-weeks.

It is noted that from an operations and personnel perspective, the addition of the OCC screen would require staffing for only 3-4 hours per day every other week, which is not sustainable for full-time facility employees. Sort line and OCC staffing are specific to those roles and would not be able to perform separate landfill duties during the non-OCC operation. As such, the OCC operation, while having much greater potential volume capacity, would only operate intermittently.

Staffing Required for OCC screen operation:

- The OCC requires 10 personnel to operate, including:
- Four (4) front line sorters
- One (1) OCC operator
- Four (4) post-OCC sorters
- One (1) Loader operator

The above does not include a floater for skid-steer operations at the OCC, which may also utilize baling personnel.

### Cost Estimate

Installation and construction cost for the OCC screen is detailed on the attached quote from KGEL Steel (2024 \$'s). Not included in that scope are both electrical upgrades and required permitting (and related design support) that will be required for the facility and estimated below.

\$	1,041,541	2023 Quote from KGEL for installation of OCC at MRF building <i>Includes utilizing company OCC from El Dorado MRF</i>
\$	100,000	Electric Panel Upgrade Estimate — Cost TBD, pending final design
\$	93,600	Building Permitting/Engineering - Cost TBD (shown as 6% of Const Cost)
\$	not incl.	CEQA processing – assumed unchanged and not required
\$	not incl.	Solid Waste Facility Permit update / RFI – assumed not required
\$	20,000	Update to Transfer Processing Report (TPR)

---

**\$ 1,255,141 Pre-Design Total OCC Installation Cost (2024 \$'s)**

The above does not include ongoing personnel labor costs to operate the equipment, nor does it include annual maintenance costs (typically estimated at 5% of installation cost).

Total Cost shown is not based on a 100% design and includes a few items estimated for budgeting purposes that may change depending on County permitting processes and electrical requirements beyond the Contractor's control. For purposes of providing an estimated impact on the Contractor Tipping Fee, this will range based on final construction costs and **estimated at an increase between \$7.40 to \$8.10 per ton.**

### **Recommendation and Summary**

Based on the information in this letter, it is not recommended to proceed with the OCC screen at the facility. This is due to limited use (due to high volume throughput capacity and low volume of materials received), impacts and impracticality to staff for less than full-time workloads, and increase in tipping fee cost without significant public benefit. Each of these individually would typically warrant to not proceed. Collectively, the addition of an OCC screen is considered unnecessary towards providing services for Tehama County and City of Red Bluff at this time.

Should you have any questions, please contact me at (530) 391-7650.

Sincerely,

A handwritten signature in black ink, appearing to read 'Dave Brown', with a stylized, cursive script.

Dave Brown  
Regional Engineer – CA  
Waste Connections

Cc: Amanda Garrett









**QUOTE #** 221106R1  
**DATE:** 11/10/2023  
**Expiration Date:** 2/11/2024

## KGEL STEEL INC.

4085 Flat Rock Rd. Riverside, CA 92505  
Phone: 951-687-7646  
Fax: 951-688-7843  
General Contractors License B, C-51, and C10 No. 1024885  
NV Contractors A-14 License No. 0089614  
LA City Certified fabricator No. FB03243  
Phoenix AZ Certified fabricator No. C08-2020  
Email: rickp@kgelsteel.net

### SOLD TO:

#### Green Waste of Tehama

19995 Plymire Rd. Red Bluff, CA 96080

Phone: 530-528-4504

Attention: Amanda Garrett

Email: amanda.Garrett@WasteConnections.com

### SHIP TO:

#### Green Waste of Tehama

19995 Plymire Rd. Red Bluff, CA 96080

**Scope of work:** Design, fabricate and install proposed equipment for OCC separation per items listed below.

Item #	Equipment Description / Item Description	Equipment Cost	Tax	Labor	Totals
			7.50%		
1	Supply and install infeed / incline Conveyor: 60" wide by 41'-0" long 10 hp with (2) E-stops. Including loading hopper.	\$ 112,750.00	\$ 8,456.25		\$ 121,206.25
2	Supply and install OCC QC Pre-Sort Conveyor: 60" wide by 25'-0" long 3 hp 120fpm (vfd), complete with two pull cords and feed pause buttons on each side of the conveyor.	\$ 41,580.00	\$ 3,118.50		\$ 44,698.50
3	Supply and install new fiber (2) sort platform 7'-7" Wide by 16'-7" long (246 sq. ft.) to include (4) . 48" wide by 30" Long drop chutes, (2) staircase, and guard rails as required.	\$ 66,022.00	\$ 4,951.65		\$ 70,973.65
4	Supply labor to Install (e) double deck Amadas OCC screen separator, complete with supports, chutes and hoppers, 2ea. 10HP VFD motors, four door E-stops switches.	\$ -			\$ -
5	Supply and install OCC QC Post-Sort Conveyor: 60" wide by 49'-0" long 7.5 hp 120fpm (vfd), complete with two pull cords and feed pause buttons on each side of the conveyor.	\$ 75,460.00	\$ 5,659.50		\$ 81,119.50

6	Supply and install new fiber (2) sort platform 5'-5". Wide by 28'-6" long, and a platform connection 36" w by 6' long (280 sq. ft.) to include (4) . 24" wide by 30" Long drop chutes, (1) staircase, and guard rails as required.	\$ 55,660.00	\$ 4,174.50		\$ 59,834.50
7	<i>Supply labor to Install (e) slider bed OCC unders transfer conveyor 72" wide by 26'-0" long 5HP, 120fpm. with 2 ply 1/8x1/16 by bare heavy duty belt complete with supports, chutes and hoppers.</i>	\$ -			\$ -
8	<b>Supply and install Container QC Sort Conveyor: 48" wide by 75'-0" long 7.5 hp 120fpm (vfd), complete with two pull cords and feed pause buttons on each side of the conveyor. With stainless steel section to be able to install magnet.</b>	\$ 99,000.00	\$ 7,425.00		\$ 106,425.00
9	Supply and install new fiber (2) sort platform 5'-5". Wide by 28'-6" long, and a platform connection 36" w by 6' long (471 sq. ft.) to include (4) . 24" wide by 30" Long drop chutes, (1) staircase, and guard rails as required.	\$ 80,872.00	\$ 6,065.40		\$ 86,937.40
10	<b>Provide and Install permanent overhead suspension magnet 37" W x 52" L. with supports and chutes.</b>	\$ 104,500.00	\$ 7,837.50		\$ 112,337.50
11	<i>Supply labor to Install (e) refurbish double deck BHS glass fines removal screen, complete with supports, chutes and hoppers, 2ea. 5HP VFD motors.</i>	\$ -			\$ -
12	<i>Supply labor to Install (e) slider bed OCC unders transfer conveyor 48" wide by 21'-0" long 3HP, 120FPM. with 2 ply 1/8x1/16 by bare heavy duty belt complete with supports, chutes and hoppers.</i>	\$ -			\$ -
13	<i>Supply labor to Install (e) slider bed glass fines transfer conveyor 48" wide by 21'-3" long 3HP, 120FPM. with 2 ply 1/8x1/16 by bare heavy duty belt complete with supports, chutes and hoppers.</i>				\$ -
14	<b>Equipment loading from El Dorado Facility, Freight, and Equipment rental.</b>			\$ 24,970.00	\$ 24,970.00
15	<b>Mechanical installation: 5 men crew, 10 hrs. a day 6 days per week, it will take three weeks to complete all mechanical installation.</b>			\$113,850.00	\$ 113,850.00
16	<b>Relocation fee: one 5 men crew, service truck and equipment trailer</b>			\$ 9,900.00	\$ 9,900.00
17	<b>Electrical Installation: Wiring from MCC to equipment ·Interface wiring. Miscellaneous signals and e stops</b>			\$109,560.00	\$ 109,560.00
18	<b>Programming and Controls:</b>			\$ 40,205.00	\$ 40,205.00
19	<b>Installation Equipment Rental</b>	\$ 18,150.00	\$ 1,361.25		\$ 19,511.25
20	<b>Freight: From Riverside CA to Red Bluff, CA</b>	\$ 27,500.00	\$ 2,062.50		\$ 29,562.50

21	Design, Field Survey, and Project Management	\$ 10,450.00			\$ 10,450.00
22	Sub Total:	\$ 691,944.00	\$ 51,112.05	\$298,485.00	\$ 1,041,541.05
23	Total for this project.				\$ 1,041,541.05

**Terms:**

30 % Down payment with PO Number.  
30 % 30 days after down payment.  
30% Upon shipment of equipment.  
10% Net 10 Days After Completion of Project.

**Shipping Method:**

Truck

**Not Included in this Quote:**

This quote does not include any City or State permits  
This quote does not structural analysis, calculations  
This quote does not include any items not listed on scope of work  
Quote does not include prevailing wages.  
Quote is based on a free and clear access area.  
Customer to supply fire watch for the duration of the project.  
Quote does not include equipment performances warranty.  
This quote does not include installing the Main power to MCC.  
This quote does not include repairing any damage electrical components, or panel due to storage of equipment and MCC.  
This quote does not include installing the Fire sprinkler system

**K.S.I.** would like to thank you for the opportunity to quote this work for you. K.S.I. has over 20 years' experience working on recycling equipment, including plant modifications, equipment integration including optical sorters for glass, containers, and fiber, baler relines, new plant installations, consulting on equipment and or plant performance. Please call me if you have any questions reference this quote at 909.835.2200

**Sincerely,**

**Rick Perez**  
**President**  
**KGEL STEEL INC.**

**Insurance:**

**Commercial General Liability Policy # PPK1968771**  
**Automobile Policy # 043-4451-C24-75F**  
**Workers Compensation Policy # 92089272**  
**Umbrella Liability Policy # BEO16998563**  
**Installation Floater Policy # 51MSFM4648**  
**Leased, Rented Equipment Business Property # 57SBABL7984**

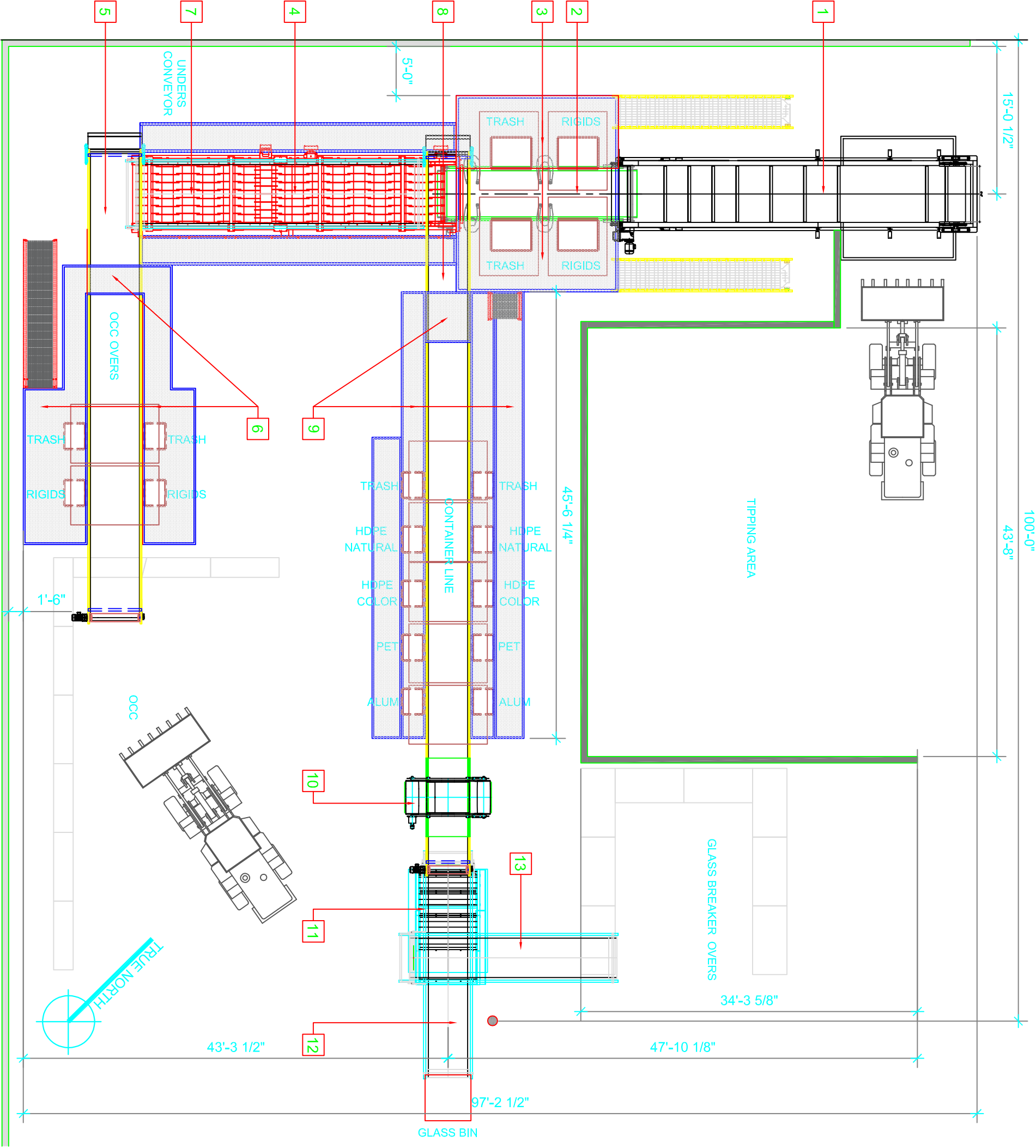
To accept this quotation sign here: \_\_\_\_\_

Title: \_\_\_\_\_

Date approved: \_\_\_\_\_

PO number: \_\_\_\_\_





Scope of Work and Description of Equipment:

- Supply and install infeed / incline Conveyor: 60" wide by 41'-0" long 10 hp with (2) E-stops. Including loading hopper.
- Supply and install OCC QC Pre-Sort Conveyor: 60" wide by 25'-0" long 3 hp 120fpm (vfd), complete with two pull cords and feed pause buttons on each side of the conveyor.
- Supply and install new fiber (2) sort platform 7'-7" Wide by 16'-7" long (246 sq. ft.) to include (4) . 48" wide by 30" Long drop chutes, (2) staircase, and guard rails as required.
- Supply labor to install (e) double deck Amadas OCC screen separator, complete with supports, chutes and hoppers, 2ea. 10HP VFD motors, four door E-stops switches.
- Supply and install OCC QC Post-Sort Conveyor: 60" wide by 49'-0" long 7.5 hp 120fpm (vfd), complete with two pull cords and feed pause buttons on each side of the conveyor.
- Supply and install new fiber (2) sort platform 5'-5". Wide by 28'-6" long, and a platform connection 36" w by 6' long (280 sq. ft.) to include (4) . 24" wide by 30" Long drop chutes, (1) staircase, and guard rails as required
- Supply labor to install (e) slider bed OCC unders transfer conveyor 72" wide by 26'-0" long 5HP, 120fpm. with 2 ply 1/8x1/16 by bare heavy duty belt complete with supports, chutes and hoppers.
- Supply and install Container QC Sort Conveyor: 48" wide by 75'-0" long 7.5 hp 120fpm (vfd), complete with two pull cords and feed pause buttons on each side of the conveyor. With stainless steel section to be able to install magnet. Supply and install new fiber (2) sort platform 5'-5". Wide by 28'-6" long, and a platform connection 36" w by 6' long (471 sq. ft.) to include (4) . 24" wide by 30" Long drop chutes, (1) staircase, and guard rails as required
- Provide and install permanent overhead suspension magnet 37W x 52" L. with supports and chutes.
- Supply labor to install (e) refurbish double deck BHS glass fines removal screen. complete with supports, chutes and hoppers, 2ea. 5HP VFD motors.
- Supply labor to install (e) slider bed OCC unders transfer conveyor 48" wide by 21'-0" long 3HP, 120FPM. with 2 ply 1/8x1/16 by bare heavy duty belt complete with supports, chutes and hoppers.
- Supply labor to install (e) slider bed glass fines transfer conveyor 48" wide by 21'-3" long 3HP, 120FPM. with 2 ply 1/8x1/16 by bare heavy duty belt complete with supports, chutes and hoppers.



N O T I C E  
CONFIDENTIALITY: THIS  
DRAWING IS THE  
PROPERTY OF KEL STEEL  
AND IS LOANED SUBJECT  
TO THE CONDITION THAT  
IT SHALL NOT BE  
REPRODUCED, COPIED  
LOANED OR OTHERWISE  
DISPOSED OF DIRECTLY  
OR INDIRECTLY. IT SHALL  
BE USED AS A MEANS OF  
REFERENCE TO WORK  
FURNISHED BY THIS  
COMPANY ONLY AND IS  
NOT TO BE SUBMITTED TO  
OUTSIDE PARTIES FOR  
EXAMINATION WITHOUT  
OUR WRITTEN CONSENT.

TEHAMA COUNTY LANDFILL  
OCC UPGRADE PROJECT  
19995 Plymire Rd. Red BluffCA96080  
PROPOSED LAYOUT

PROJECT:  
SHEET TITLE:

DESIGNER  
Rick Perez

DRAWN BY  
Rick Perez

ENG. APPR.  
Rick Perez

DATE  
11.02.2022

DWG. NO.

REV

SHEET NUMBER

A.00